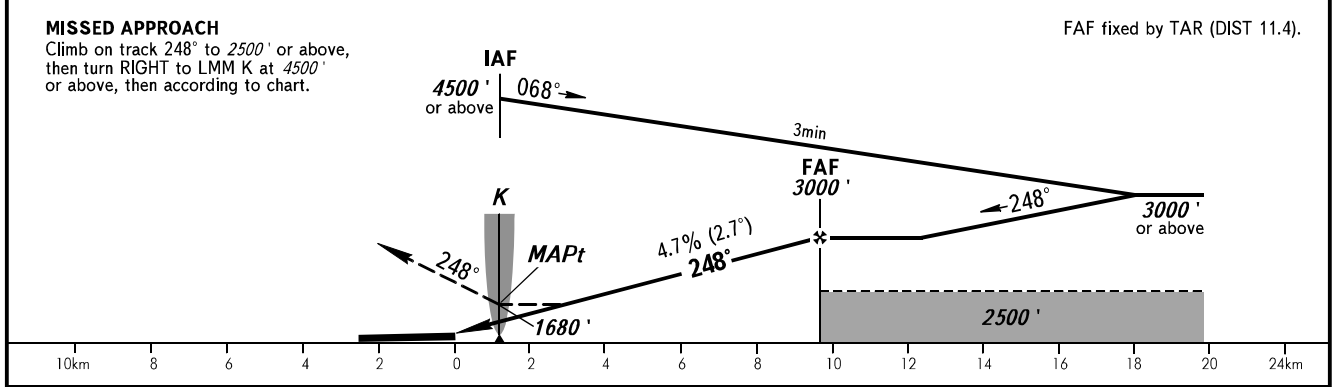
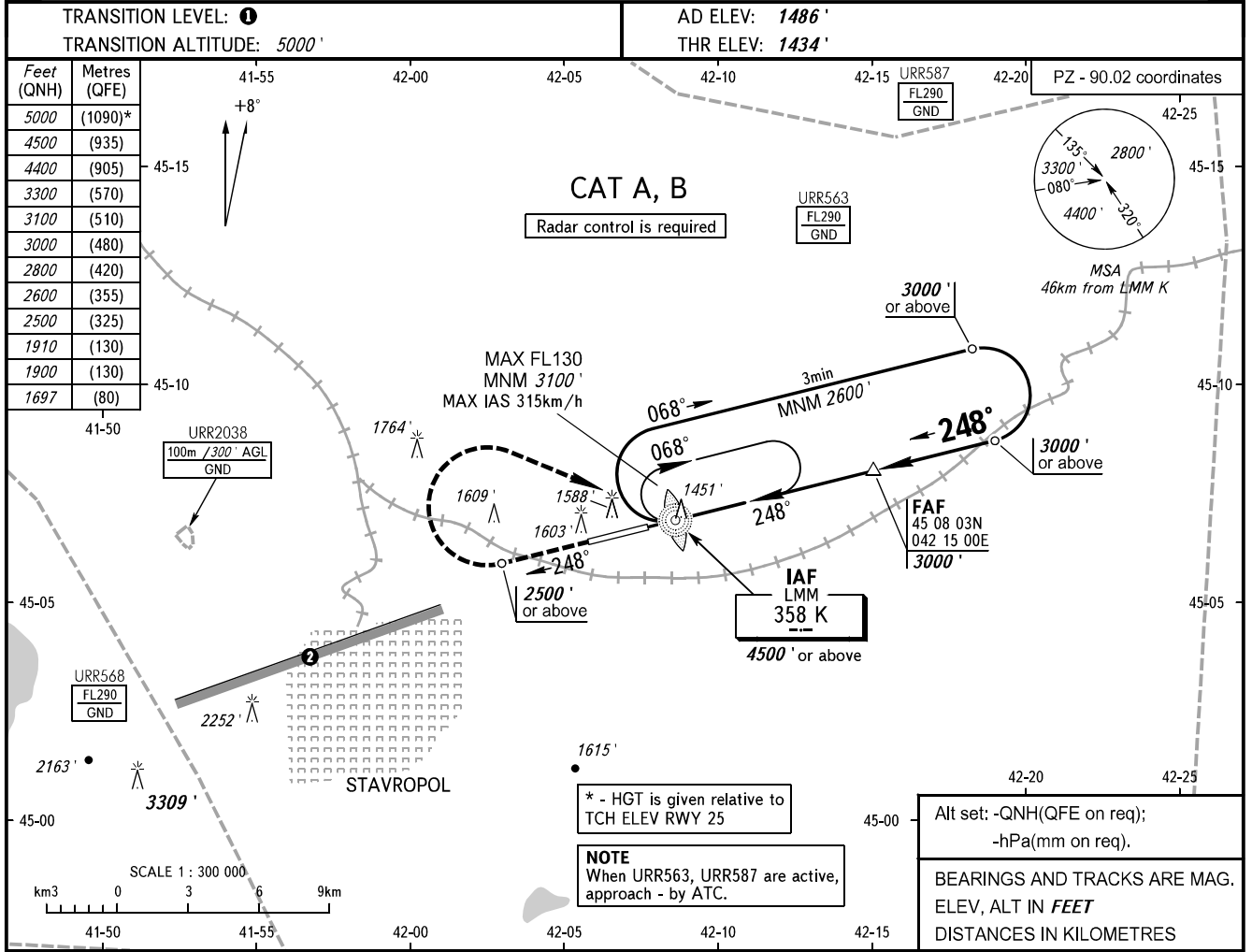


**INSTRUMENT
APPROACH
CHART - ICAO**

STAVROPOL, RUSSIA
SHPAKOVSKOYE
NDB W RWY 25

TOWER **120.900**



OCA(H)	A	B	C	D
Straight-in Approach	1697' (263')	1697' (263')		
Circling	1900' (413')	1910' (418')		

- 1** TRANSITION LEVEL:
 - FL060 when QNH is 1013 hPa (760mm mercury column) or above;
 - FL070 when QNH is 977 hPa (733mm mercury column) or above, but less than 1013 hPa (760mm mercury column);
 - FL080 when QNH is less than 977 hPa (733mm mercury column).
- 2** Limiting bearing line 243° from ARP DIST 9-21km GND-FL060.
- NOTE**
 MAPt at LMM K. Timing not authorized for defining MAPt.

GROUND SPEED	km/h	150	180	210	240	270	300	330	360	390
RATE OF DESCENT	m/s	2.0	2.4	2.7	3.1	3.5	3.9	4.3	4.7	5.1
	ft/min	385	463	540	617	694	771	848	925	1002