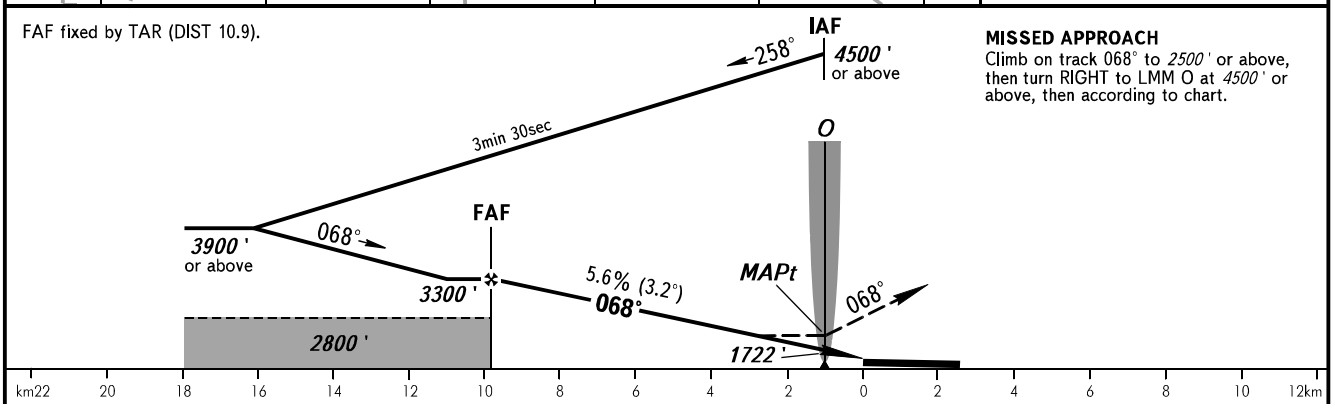
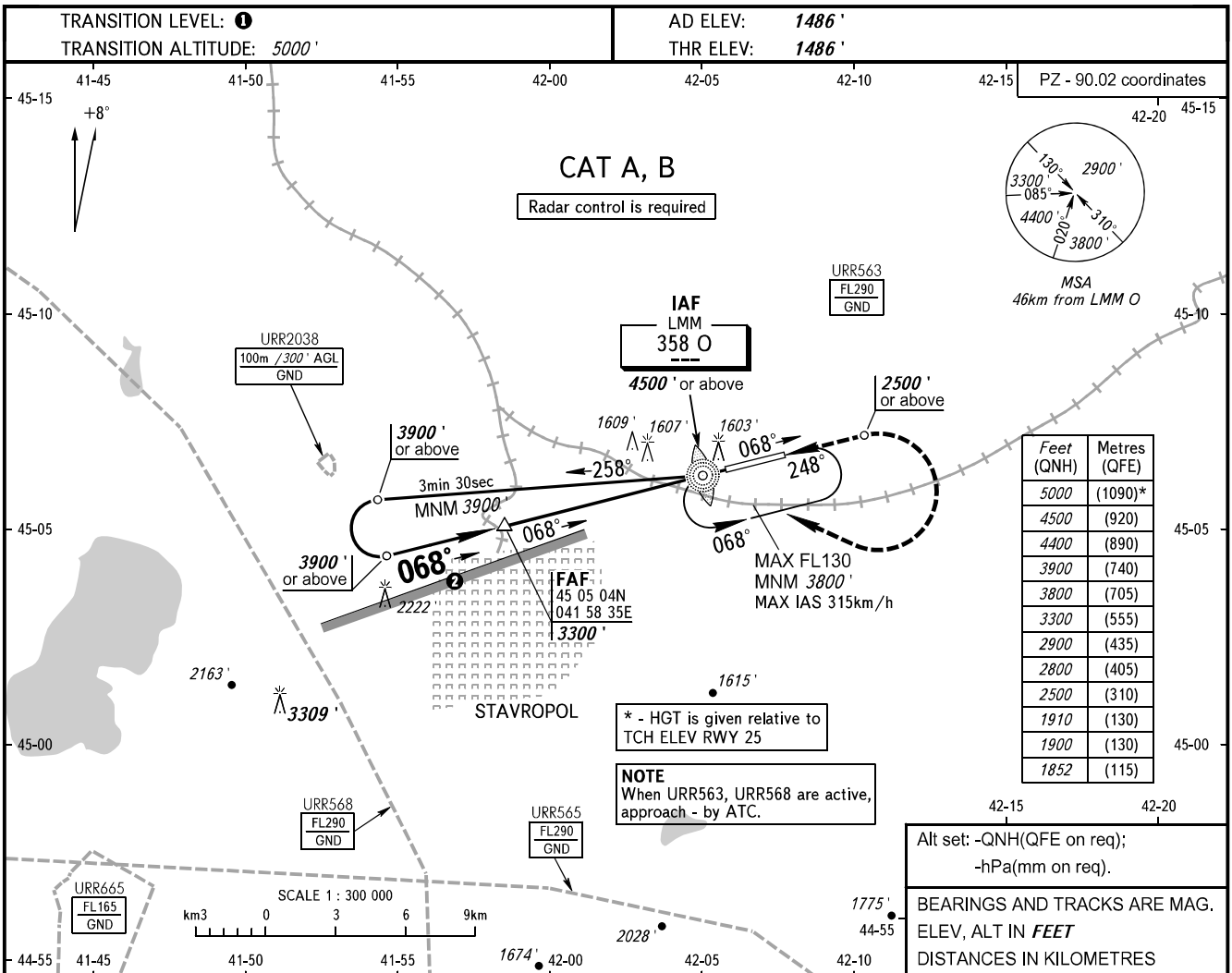


**INSTRUMENT  
APPROACH  
CHART - ICAO**

TOWER **120.900**

**STAVROPOL, RUSSIA**  
SHPAKOVSKOYE  
NDB W RWY 07



OCA(H)		A	B	C	D						
Straight-in	Approach	1852' (367')	1852' (367')								
Circling		1900' (413')	1910' (418')								
GROUND SPEED		km/h	150	180	210	240	270	300	330	360	390
RATE OF DESCENT		m/s	2.0	2.4	2.7	3.1	3.5	3.9	4.3	4.7	5.1
		ft/min	385	463	540	617	694	771	848	925	1002

**1** TRANSITION LEVEL:  
- FL060 when QNH is 1013 hPa (760mm mercury column) or above;  
- FL070 when QNH is 977 hPa (733mm mercury column) or above, but less than 1013 hPa (760mm mercury column);  
- FL080 when QNH is less than 977 hPa (733mm mercury column).

**2** Limiting bearing line 243° from ARP DIST 9-21km GND-FL060.

**NOTE**  
MAPt at LMM O. Timing not authorized for defining MAPt.

CHANGE: New chart