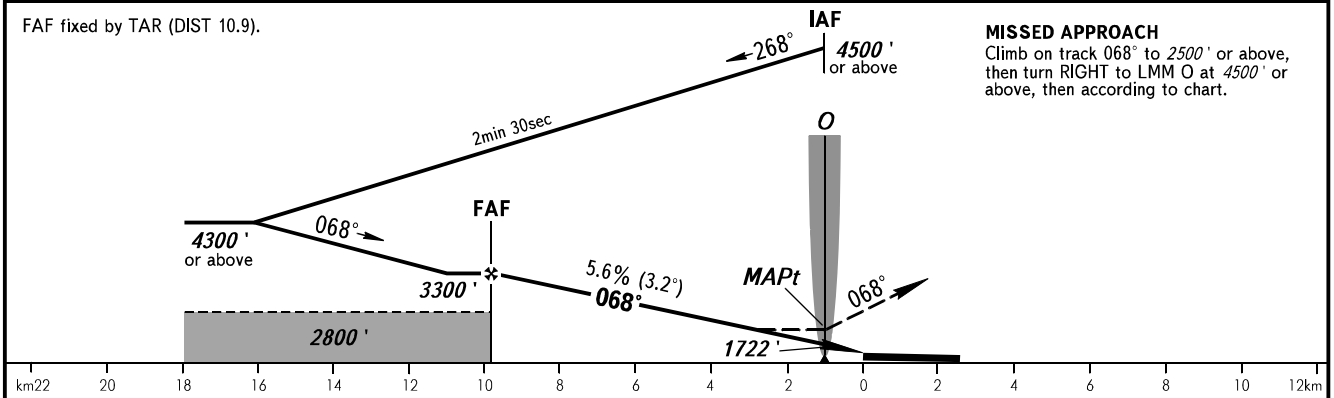
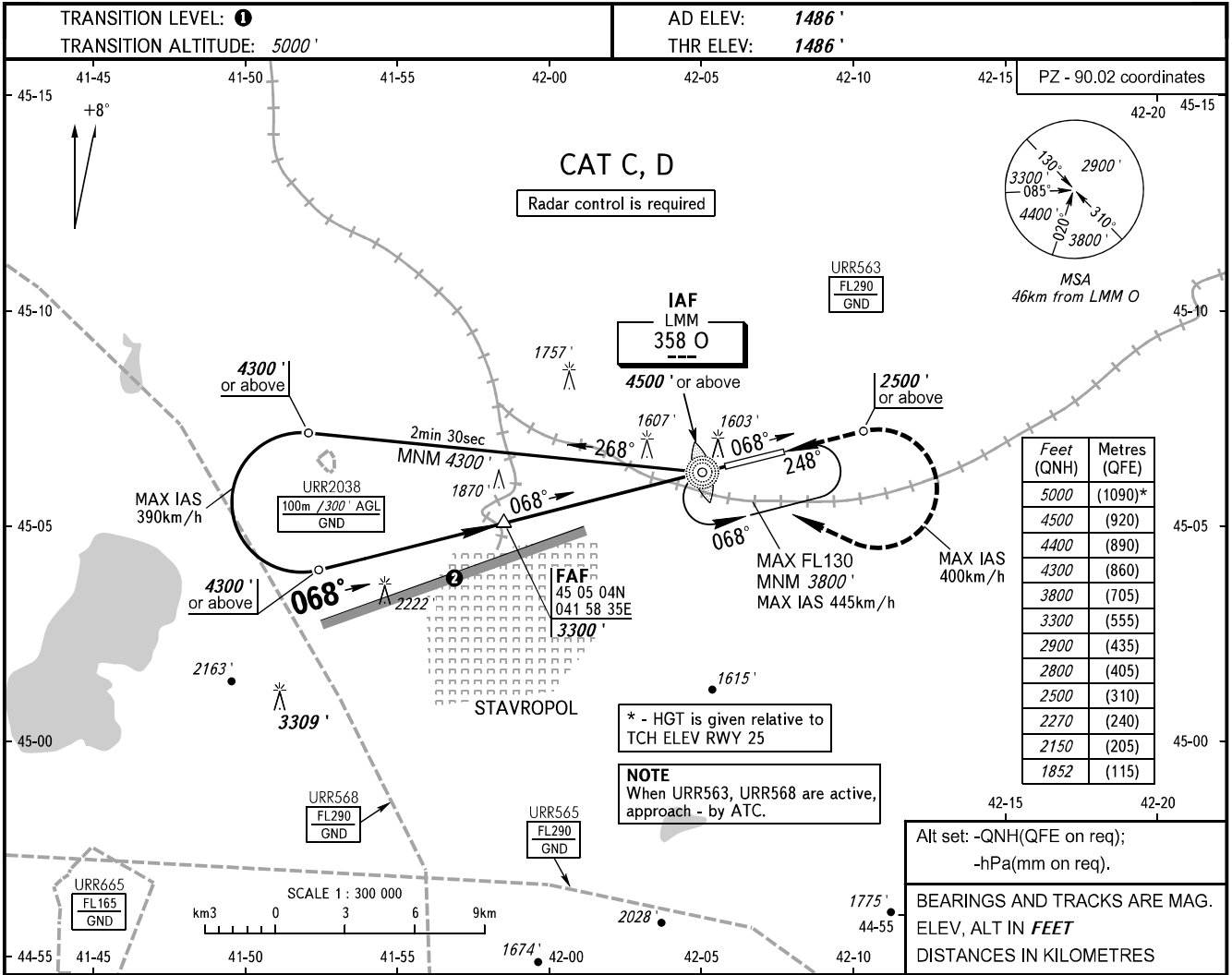


**INSTRUMENT  
APPROACH  
CHART - ICAO**

**STAVROPOL, RUSSIA  
SHPAKOVSKOYE  
NDB X RWY 07**

TOWER **120.900**



OCA(H)	A	B	C	D						
Straight-in			1852' (367')	1852' (367')						
Approach										
Circling			2150' (664')	2270' (778')						
GROUND SPEED	km/h	150	180	210	240	270	300	330	360	390
RATE OF DESCENT	m/s	2.0	2.4	2.7	3.1	3.5	3.9	4.3	4.7	5.1
	ft/min	385	463	540	617	694	771	848	925	1002

**1** TRANSITION LEVEL:  
- FL060 when QNH is 1013 hPa (760mm mercury column) or above;  
- FL070 when QNH is 977 hPa (733mm mercury column) or above, but less than 1013 hPa (760mm mercury column);  
- FL080 when QNH is less than 977 hPa (733mm mercury column).

**2** Limiting bearing line 243° from ARP DIST 9-2.1km GND-FL060.

**NOTE**  
MAPt at LMM O. Timing not authorized for defining MAPt.

CHANGE: New chart