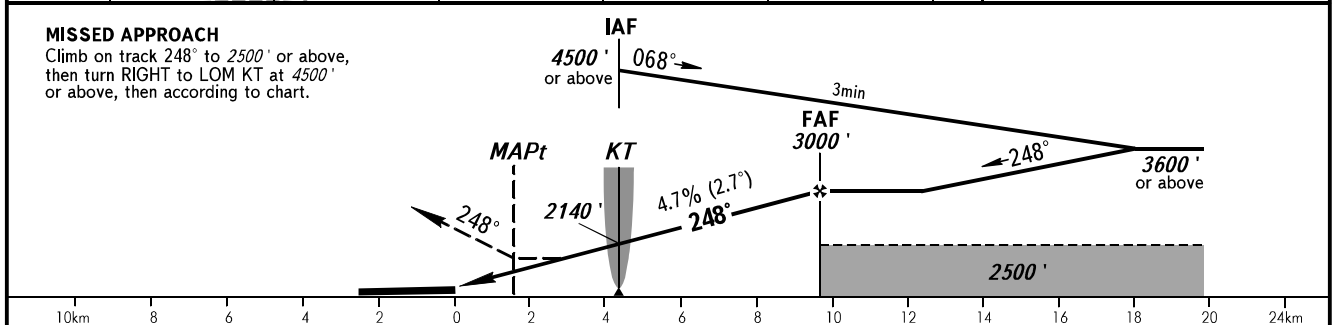
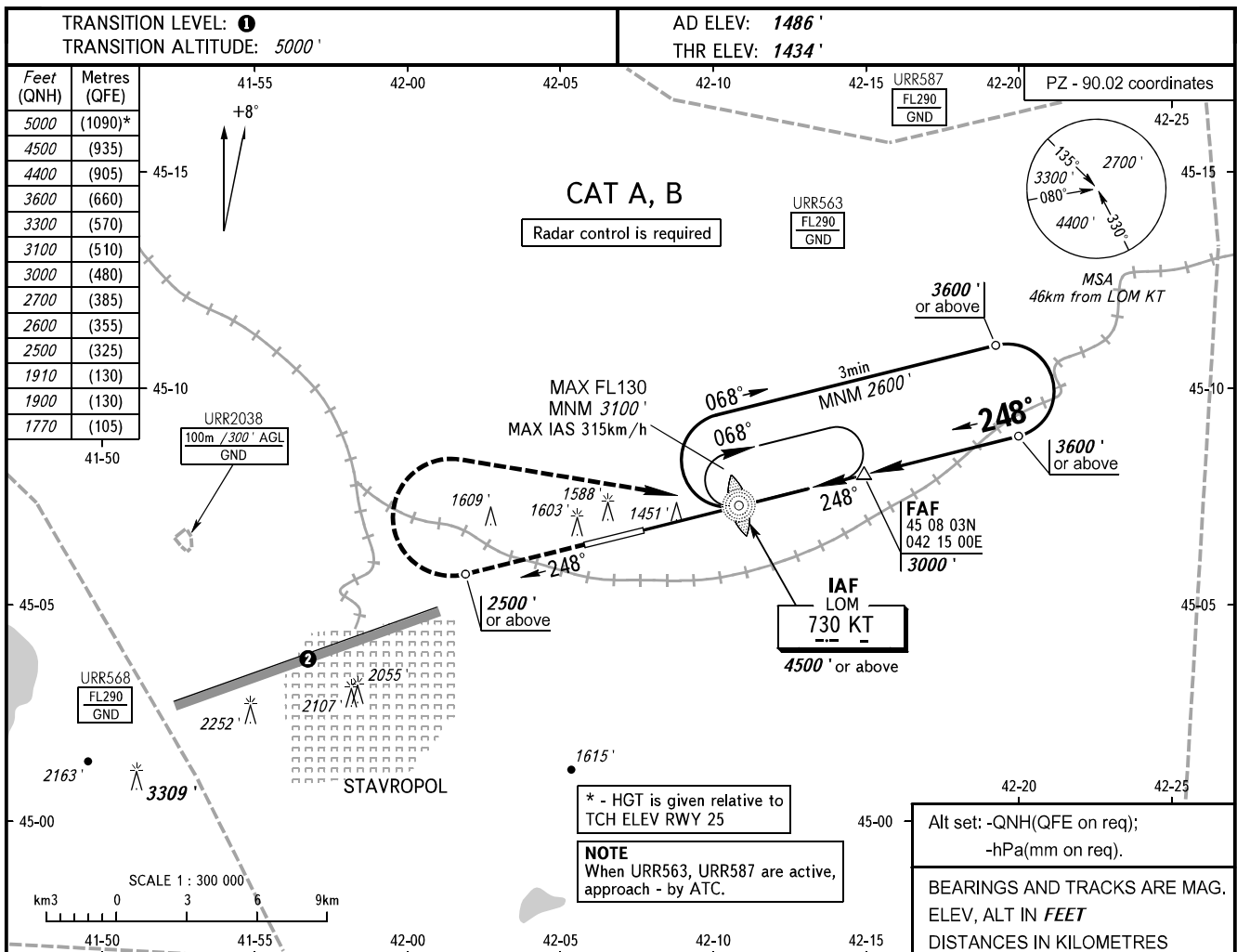


**INSTRUMENT
APPROACH
CHART - ICAO**

**STAVROPOL, RUSSIA
SHPAKOVSKOYE
NDB Y RWY 25**

TOWER **120.900**



OCA(H)		A	B	C	D						
Straight-in Approach		1770' (335')	1770' (335')								
Circling		1900' (413')	1910' (418')								
GROUND SPEED		km/h	150	180	210	240	270	300	330	360	390
FAF - MAPt 8000m		min:sec	3:11	2:40	2:17	1:59	1:46	1:35	1:27	1:20	1:13
RATE OF DESCENT		m/s	2.0	2.4	2.7	3.1	3.5	3.9	4.3	4.7	5.1
		ft/min	385	463	540	617	694	771	848	925	1002

- ① TRANSITION LEVEL:
 - FL060 when QNH is 1013 hPa (760mm mercury column) or above;
 - FL070 when QNH is 977 hPa (733mm mercury column) or above, but less than 1013 hPa (760mm mercury column);
 - FL080 when QNH is less than 977 hPa (733mm mercury column).
- ② Limiting bearing line 243° from ARP DIST 9-21km GND-FL060.