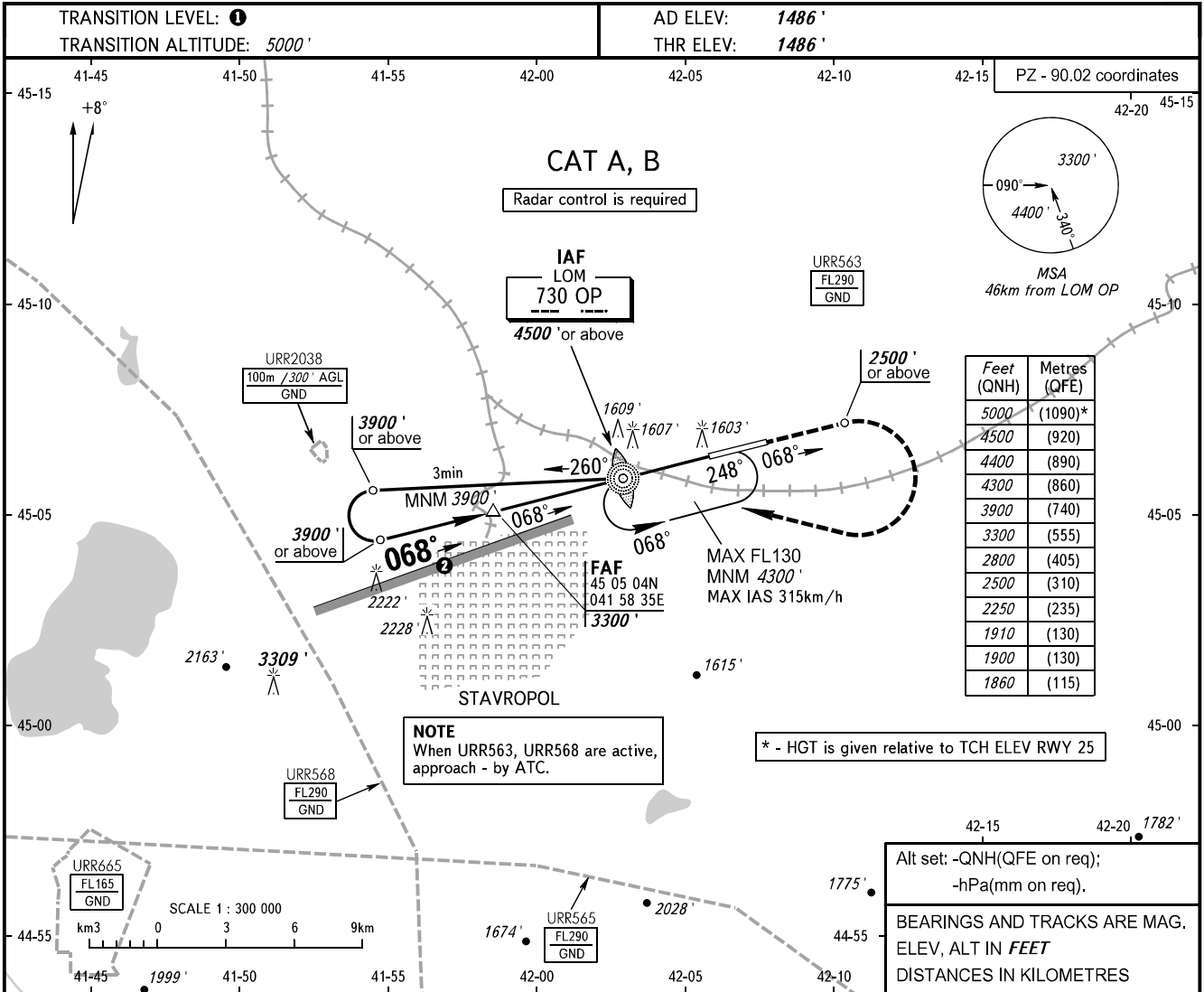


**INSTRUMENT
APPROACH
CHART - ICAO**

**STAVROPOL, RUSSIA
SHPAKOVSKOYE
NDB Y RWY 07**

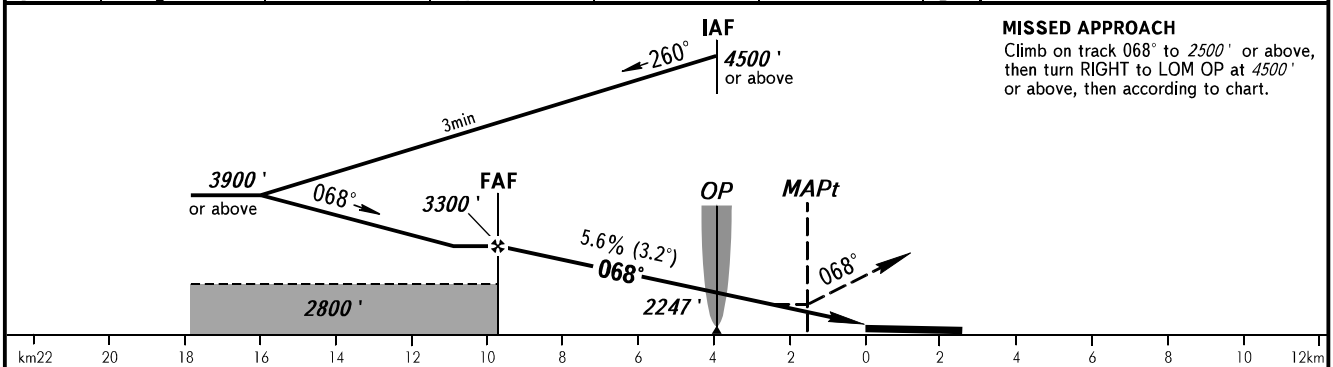
TOWER **120.900**



NOTE
When URR563, URR568 are active,
approach - by ATC.

* - HGT is given relative to TCH ELEV RWY 25

Alt set: -QNH(QFE on req);
-hPa(mm on req).
BEARINGS AND TRACKS ARE MAG.
ELEV, ALT IN FEET
DISTANCES IN KILOMETRES



MISSED APPROACH
Climb on track 068° to 2500' or above,
then turn RIGHT to LOM OP at 4500'
or above, then according to chart.

OCA(H)	A	B	C	D	TRANSITION LEVEL:					
Straight-in Approach	1860' (370)	1860' (370)			- FLO60 when QNH is 1013 hPa (760mm mercury column) or above;					
					- FLO70 when QNH is 977 hPa (733mm mercury column) or above, but less than 1013 hPa (760mm mercury column);					
Circling	1900' (413)	1910' (418)			- FLO80 when QNH is less than 977 hPa (733mm mercury column).					
					② Limiting bearing line 243° from ARP DIST 9-21km GND-FL060.					
GROUND SPEED	km/h	150	180	210	240	270	300	330	360	390
FAF - MAPt 8080m	min:sec	3:13	2:41	2:18	2:01	1:47	1:36	1:28	1:20	1:13
RATE OF DESCENT	m/s	2.0	2.4	2.7	3.1	3.5	3.9	4.3	4.7	5.1
	ft/min	385	463	540	617	694	771	848	925	1002

CHANGE: New chart