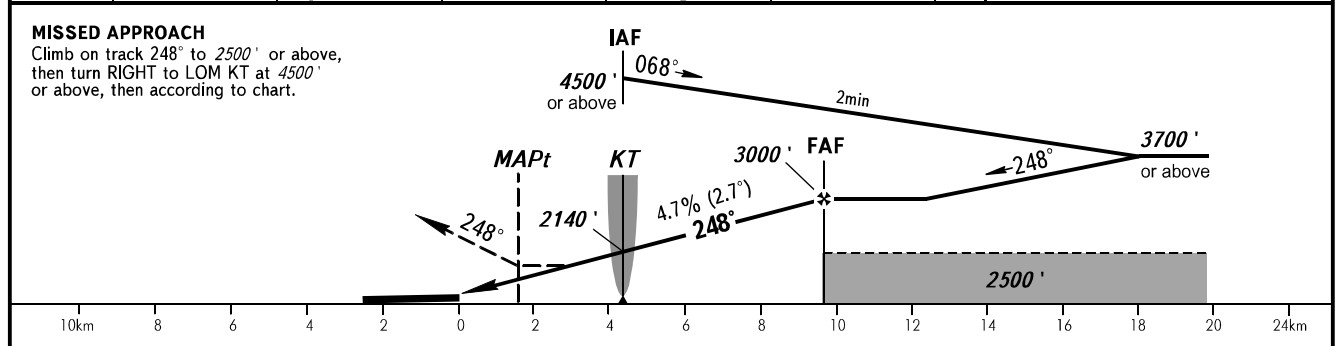
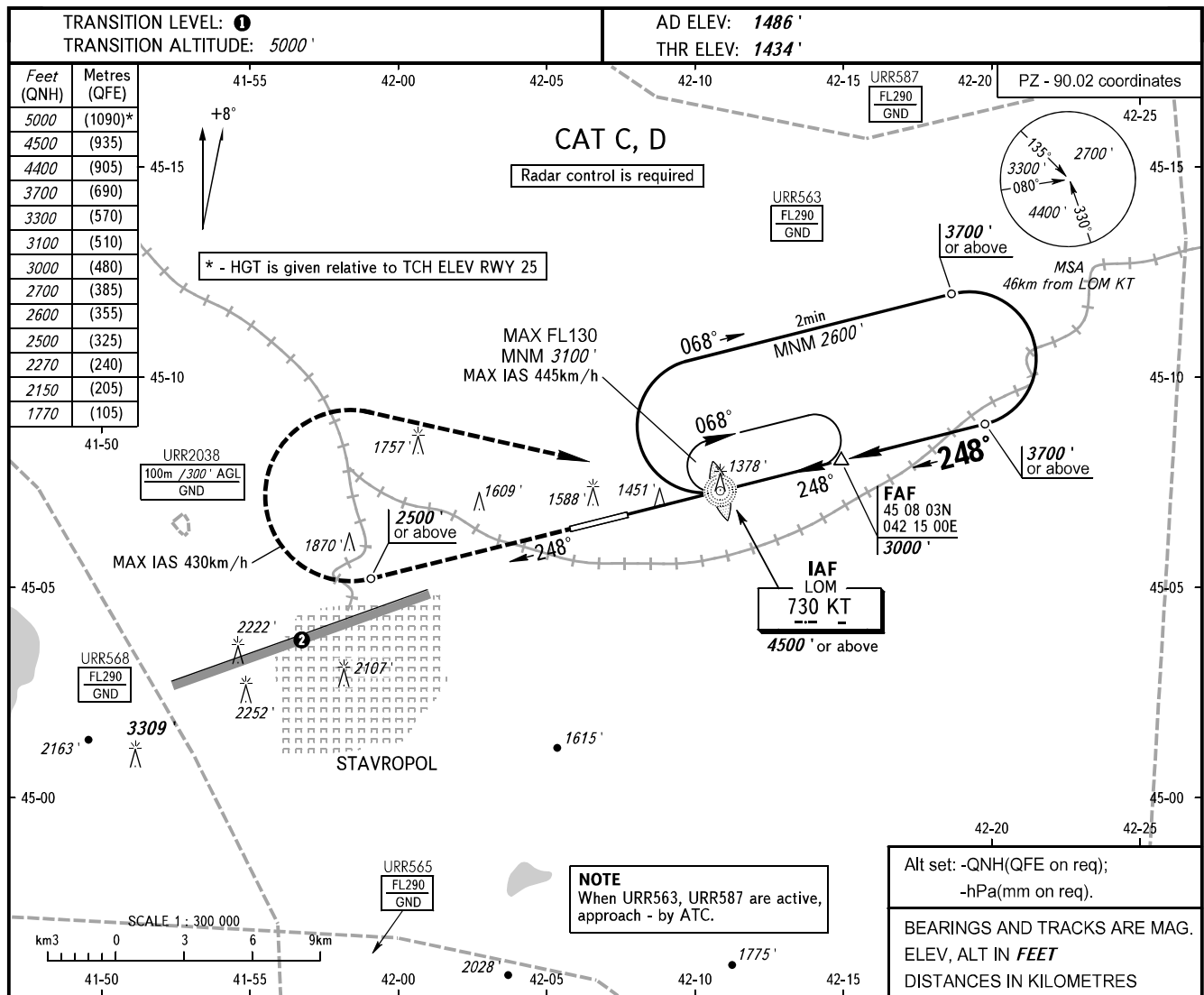


**INSTRUMENT
APPROACH
CHART - ICAO**

**STAVROPOL, RUSSIA
SHPAKOVSKOYE
NDB Z RWY 25**

TOWER **120.900**



| OCA(H) | | A | B | C | D | | | | | | |
|------------------|----------|---------|------|-------------|-------------|------|------|------|------|------|------|
| Straight-in | Approach | | | 1770' (335) | 1770' (335) | | | | | | |
| | | | | | | | | | | | |
| Circling | | | | 2150' (664) | 2270' (778) | | | | | | |
| GROUND SPEED | | km/h | 150 | 180 | 210 | 240 | 270 | 300 | 330 | 360 | 390 |
| FAF - MAPt 8000m | | min:sec | 3:11 | 2:40 | 2:17 | 1:59 | 1:46 | 1:35 | 1:27 | 1:20 | 1:13 |
| RATE OF DESCENT | | m/s | 2.0 | 2.4 | 2.7 | 3.1 | 3.5 | 3.9 | 4.3 | 4.7 | 5.1 |
| | | ft/min | 385 | 463 | 540 | 617 | 694 | 771 | 848 | 925 | 1002 |

1 TRANSITION LEVEL:
 - FL060 when QNH is 1013 hPa (760mm mercury column) or above;
 - FL070 when QNH is 977 hPa (733mm mercury column) or above, but less than 1013 hPa (760mm mercury column);
 - FL080 when QNH is less than 977 hPa (733mm mercury column).
2 Limiting bearing line 243° from ARP DIST 9-21km GND-FL060.