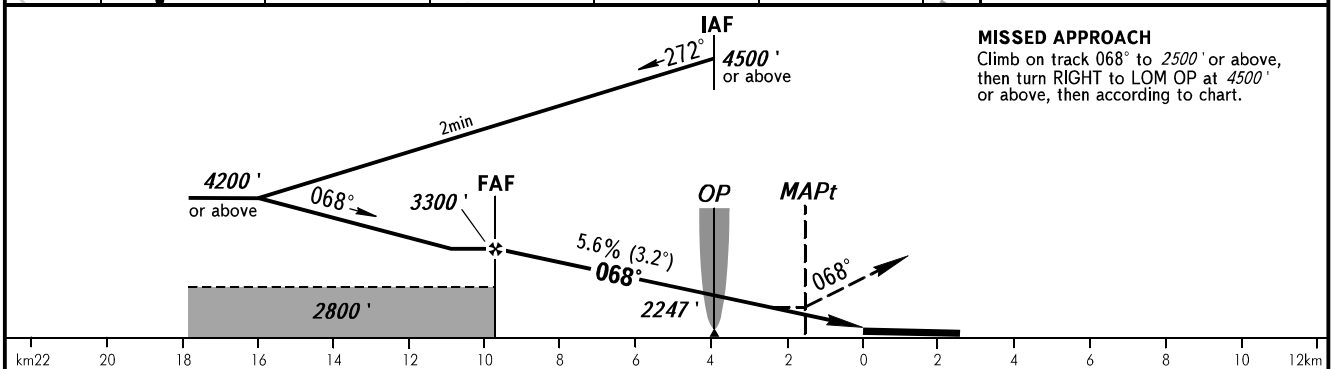
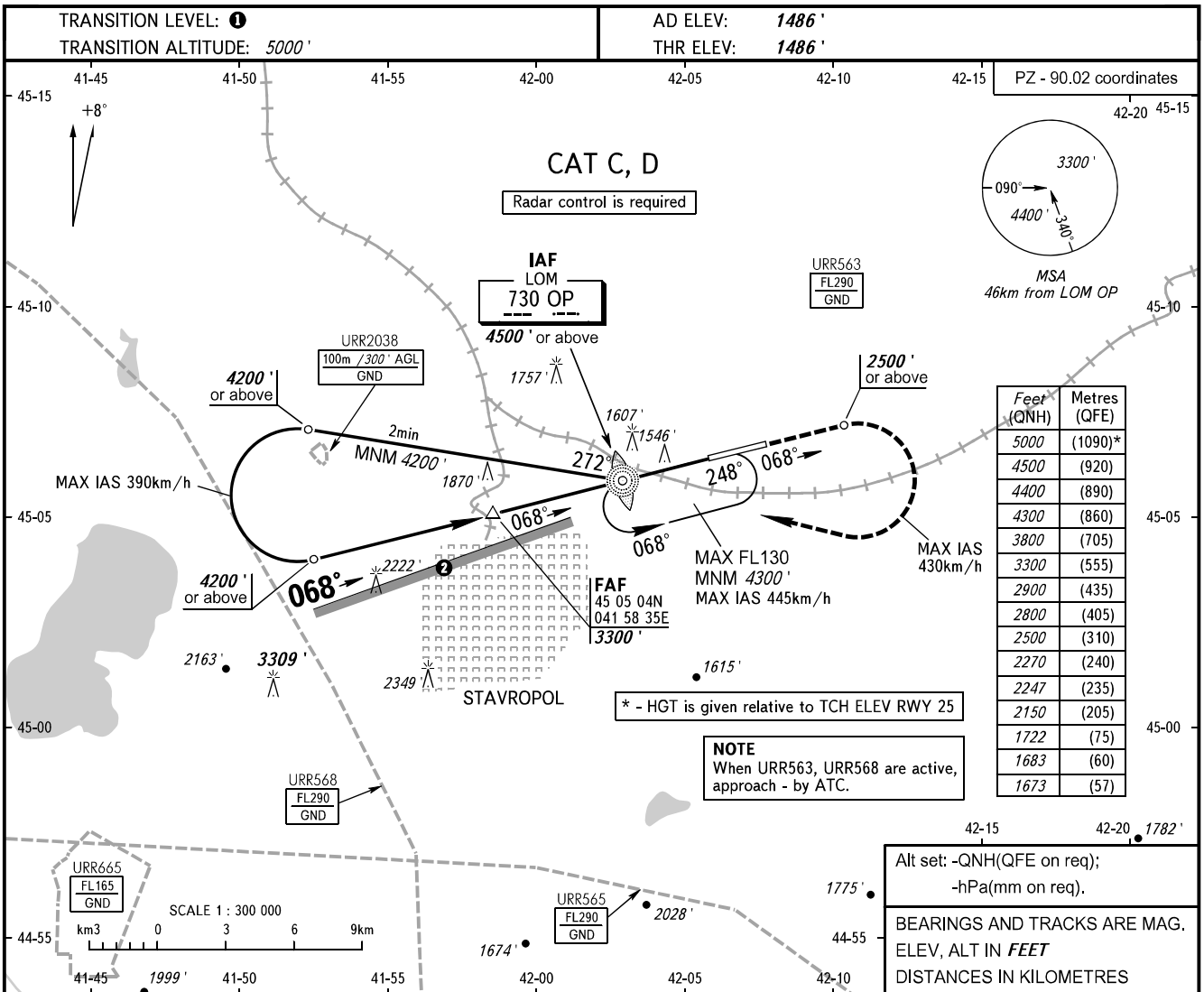


**INSTRUMENT
APPROACH
CHART - ICAO**

TOWER **120.900**

STAVROPOL, RUSSIA
SHPAKOVSKOYE
NDB Z RWY 07



OCA(H)	A	B	C	D	1 TRANSITION LEVEL: - FL060 when QNH is 1013 hPa (760mm mercury column) or above; - FL070 when QNH is 977 hPa (733mm mercury column) or above, but less than 1013 hPa (760mm mercury column); - FL080 when QNH is less than 977 hPa (733mm mercury column). 2 Limiting bearing line 243° from ARP DIST 9-21km GND-FL060.					
Straight-in Approach			1860' (370)	1860' (370)						
Circling			2150' (664)	2270' (778)						
GROUND SPEED	km/h	150	180	210	240	270	300	330	360	390
FAF - MAPt 8080m	min:sec	3:13	2:41	2:18	2:01	1:47	1:36	1:28	1:20	1:13
RATE OF DESCENT	m/s	2.0	2.4	2.7	3.1	3.5	3.9	4.3	4.7	5.1
	ft/min	385	463	540	617	694	771	848	925	1002

CHANGE: New chart