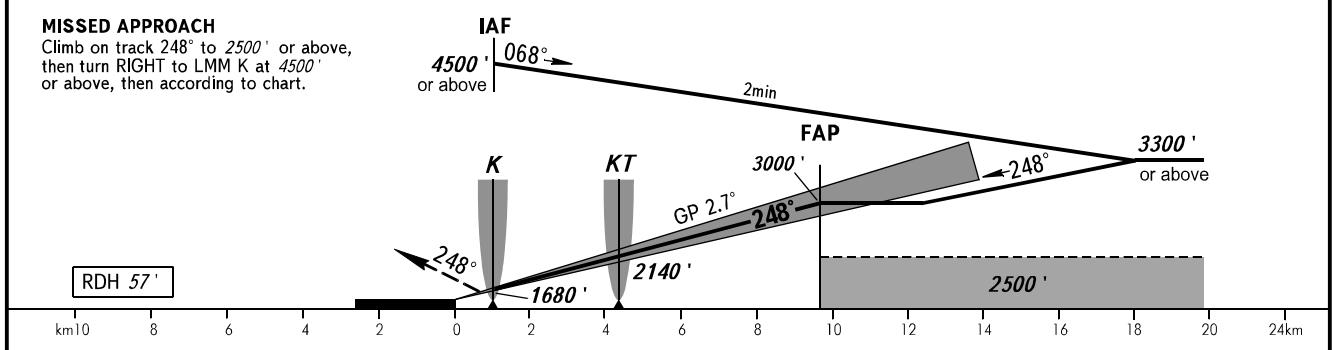
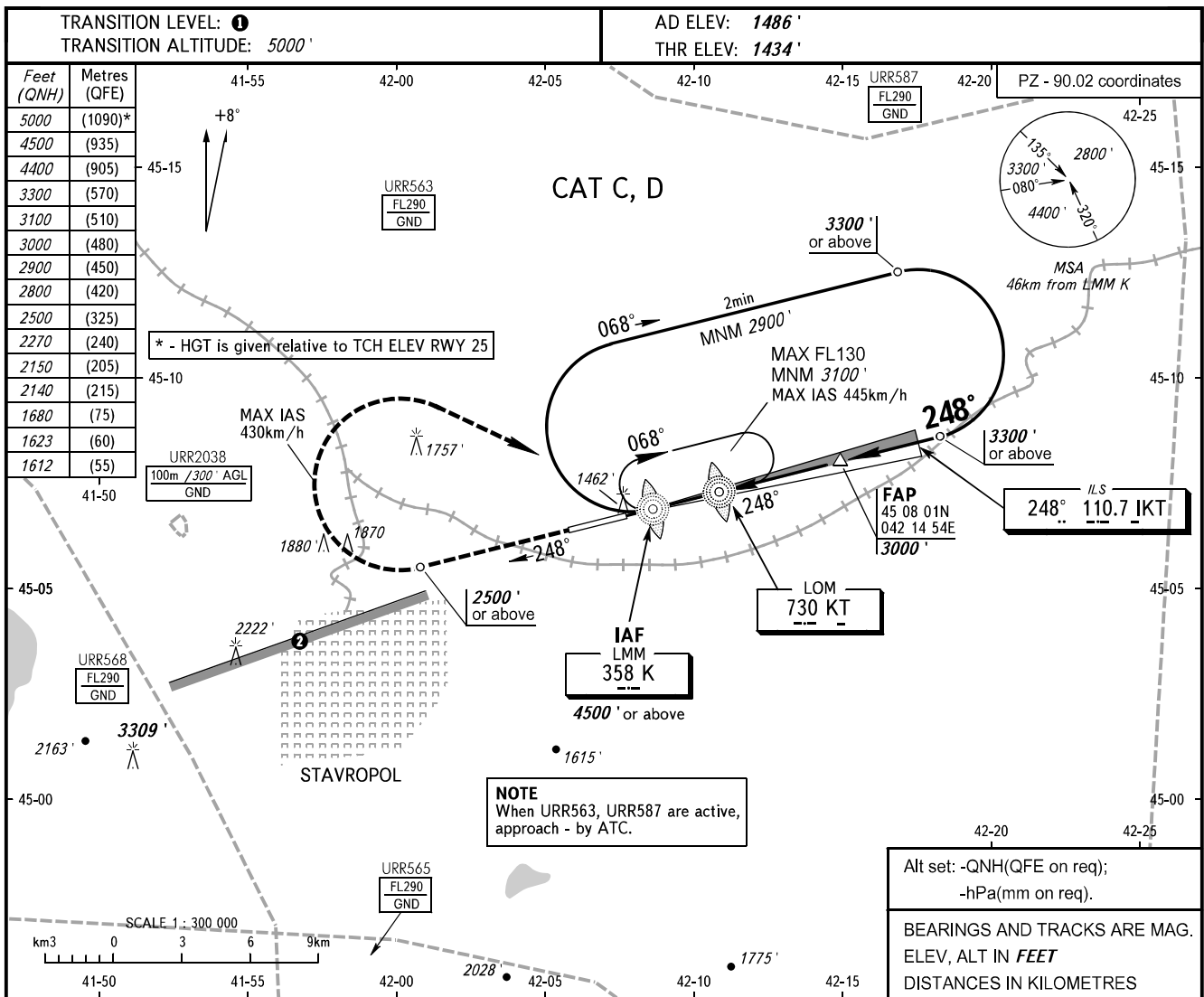


**INSTRUMENT  
APPROACH  
CHART - ICAO**

**STAVROPOL, RUSSIA  
SHPAKOVSKOYE  
ILS V RWY 25 CAT I**

TOWER **120.900**



| OCA(H)                  |              | A   | B   | C           | D           |     |     |     |     |      |
|-------------------------|--------------|-----|-----|-------------|-------------|-----|-----|-----|-----|------|
| Straight-in<br>Approach | <b>CAT I</b> |     |     | 1612' (179) | 1623' (189) |     |     |     |     |      |
|                         |              |     |     |             |             |     |     |     |     |      |
|                         |              |     |     |             |             |     |     |     |     |      |
| Circling                |              |     |     | 2150' (664) | 2270' (778) |     |     |     |     |      |
| GROUND SPEED            | km/h         | 150 | 180 | 210         | 240         | 270 | 300 | 330 | 360 | 390  |
| RATE OF DESCENT         | m/s          | 2.0 | 2.4 | 2.7         | 3.1         | 3.5 | 3.9 | 4.3 | 4.7 | 5.1  |
|                         | ft/min       | 385 | 463 | 540         | 617         | 694 | 771 | 848 | 925 | 1002 |

**1** TRANSITION LEVEL:  
- FL060 when QNH is 1013 hPa (760mm mercury column)  
or above;  
- FL070 when QNH is 977 hPa (733mm mercury column)  
or above, but less than 1013 hPa (760mm mercury column);  
- FL080 when QNH is less than 977 hPa (733mm mercury  
column).

**2** Limiting bearing line 243° from ARP DIST 9-21km GND-FL060.