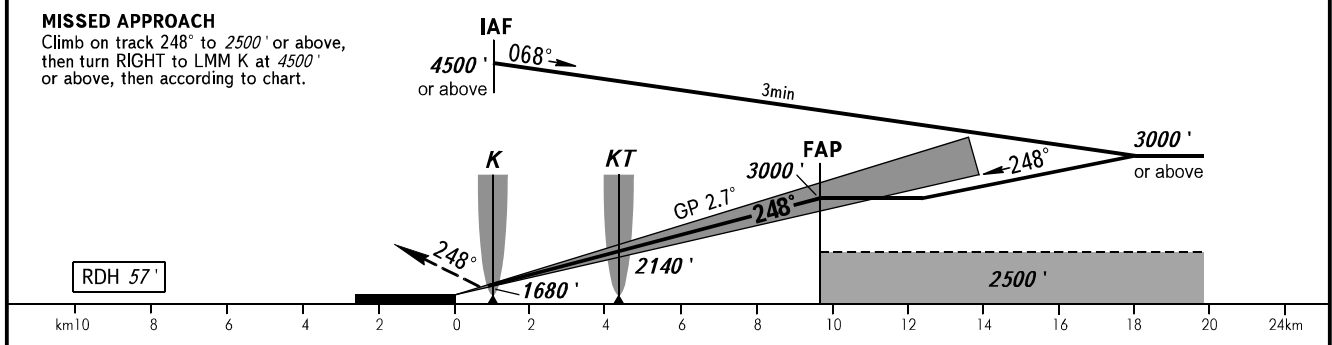
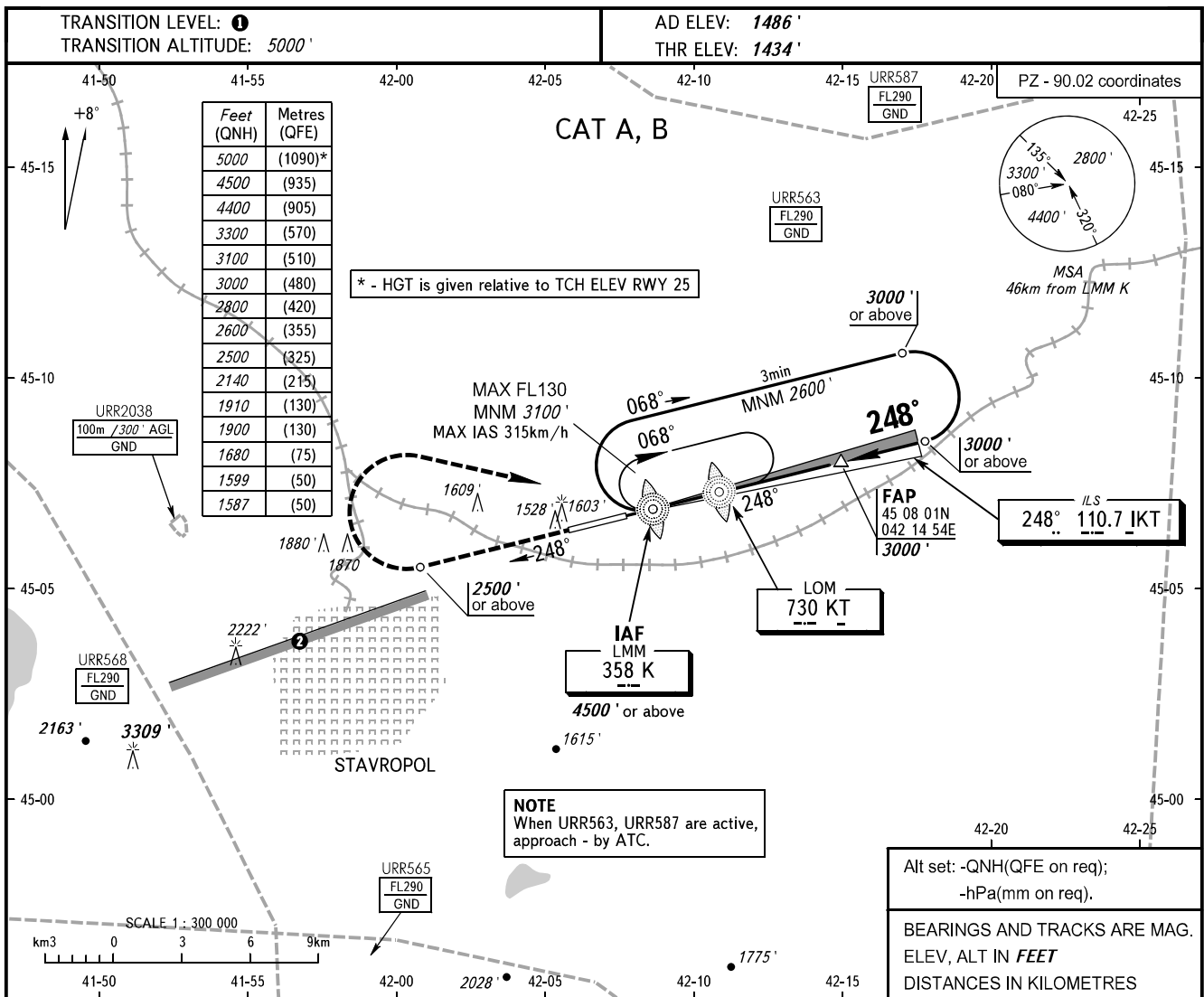


**INSTRUMENT
APPROACH
CHART - ICAO**

**STAVROPOL, RUSSIA
SHPAKOVSKOYE
ILS W RWY 25 CAT I**

TOWER **120.900**



OCA(H)		A	B	C	D	① TRANSITION LEVEL:							
Straight-in Approach	CAT I	1587' (153)	1599' (166)			- FL060 when QNH is 1013 hPa (760mm mercury column) or above;							
						- FL070 when QNH is 977 hPa (733mm mercury column) or above, but less than 1013 hPa (760mm mercury column);							
						- FL080 when QNH is less than 977 hPa (733mm mercury column).							
Circling		1900' (413)	1910' (418)			② Limiting bearing line 243° from ARP DIST 9-21km GND-FL060.							
GROUND SPEED		km/h	150	180	210	240	270	300	330	360	390		
RATE OF DESCENT		m/s	2.0	2.4	2.7	3.1	3.5	3.9	4.3	4.7	5.1		
		ft/min	385	463	540	617	694	771	848	925	1002		