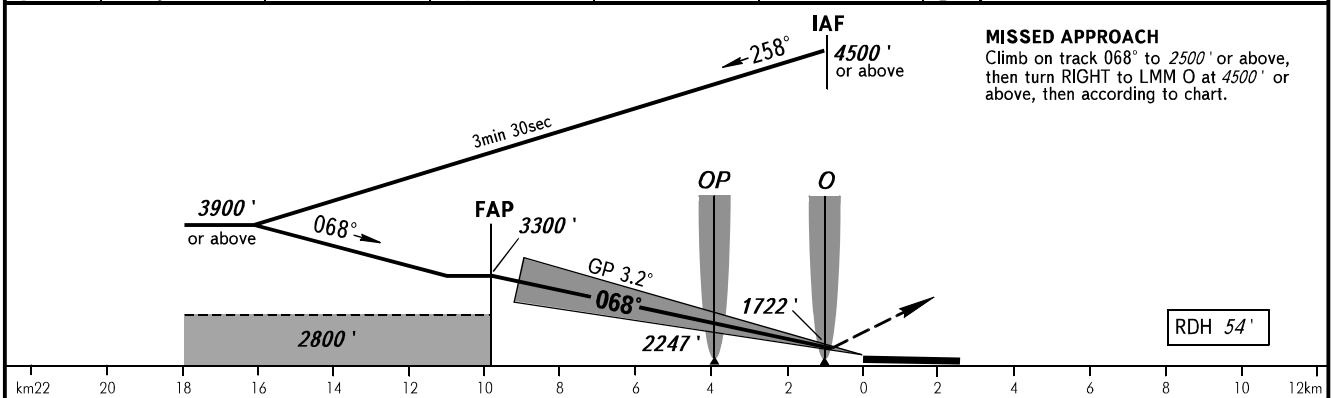
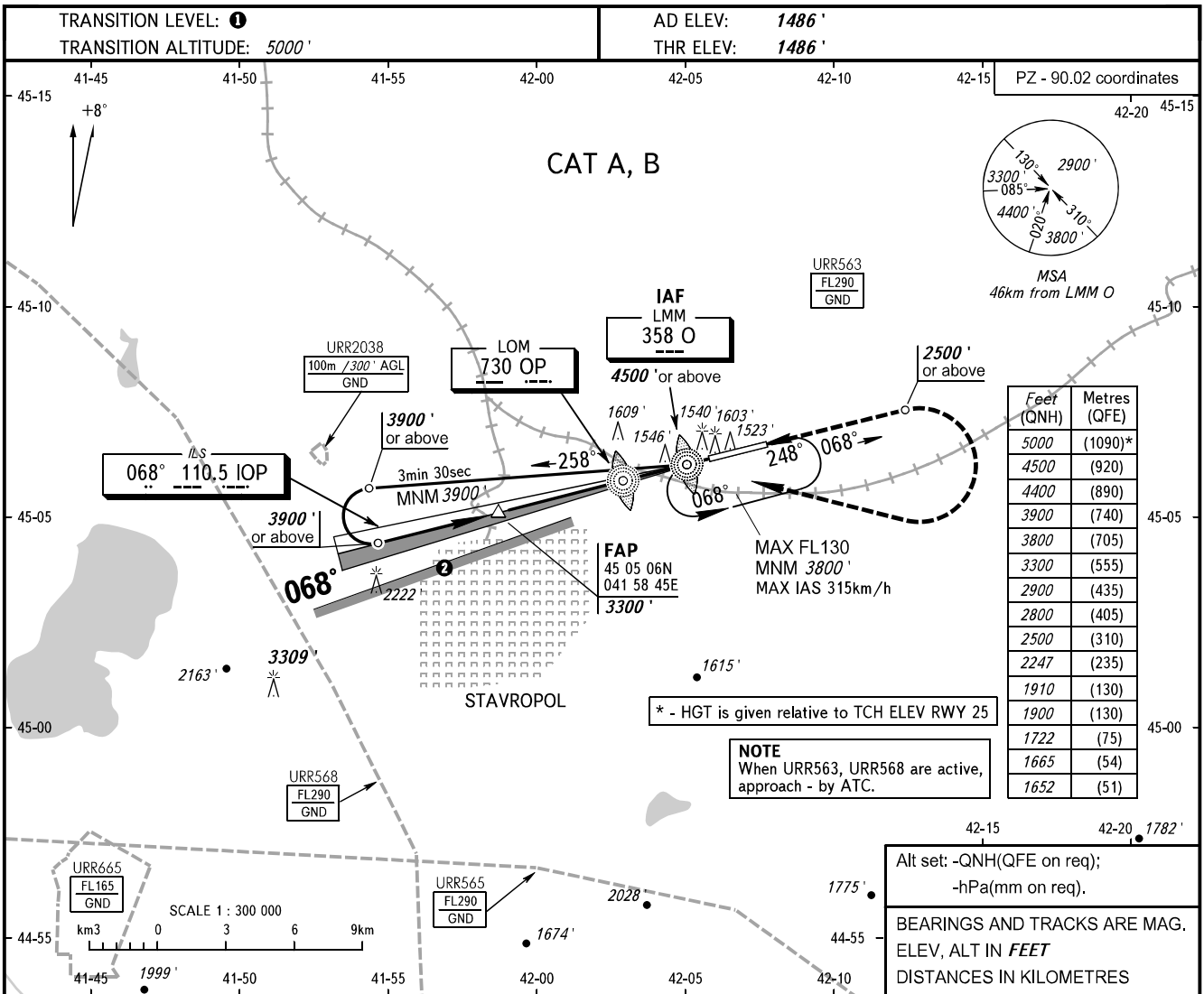


**INSTRUMENT  
APPROACH  
CHART - ICAO**

**STAVROPOL, RUSSIA  
SHPAKOVSKOYE  
ILS W RWY 07 CAT I**

TOWER **120.900**



OCA(H)		A	B	C	D	<b>1</b> TRANSITION LEVEL: - FL060 when QNH is 1013 hPa (760mm mercury column) or above; - FL070 when QNH is 977 hPa (733mm mercury column) or above, but less than 1013 hPa (760mm mercury column); - FL080 when QNH is less than 977 hPa (733mm mercury column). <b>2</b> Limiting bearing line 243° from ARP DIST 9-21km GND-FL060.					
Straight-in Approach	<b>CAT I</b>	1652' (167)	1665' (179)								
Circling		1900' (413)	1910' (418)								
GROUND SPEED		km/h	150	180	210	240	270	300	330	360	390
RATE OF DESCENT		m/s	2.0	2.4	2.7	3.1	3.5	3.9	4.3	4.7	5.1
		ft/min	385	463	540	617	694	771	848	925	1002

CHANGE: New chart