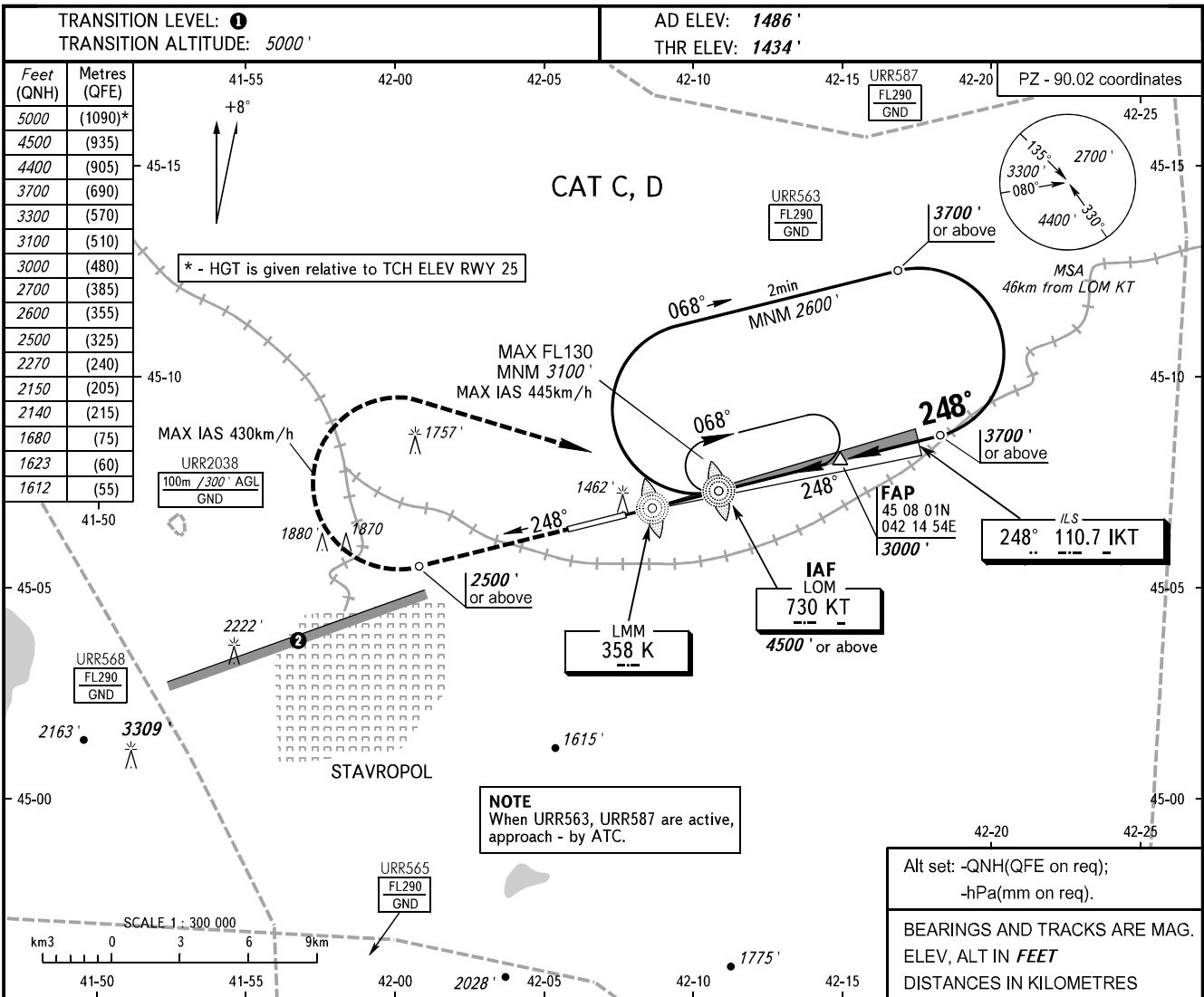


**INSTRUMENT
APPROACH
CHART - ICAO**

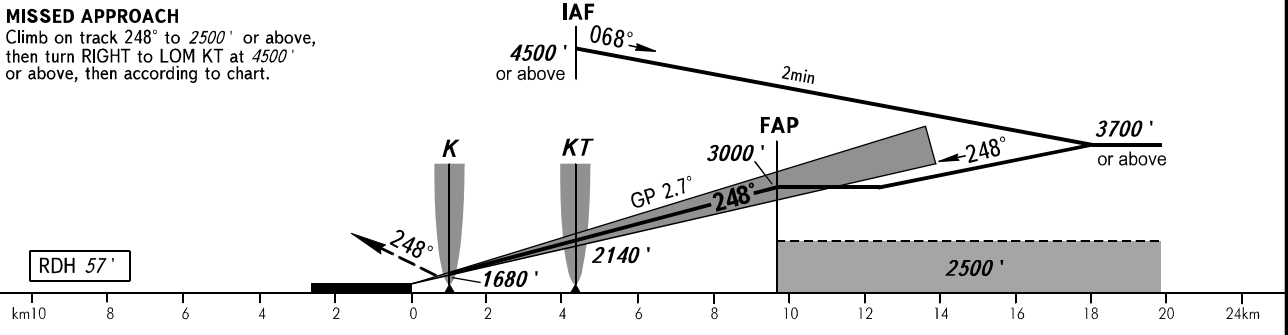
**STAVROPOL, RUSSIA
SHPAKOVSKOYE
ILS X RWY 25 CAT I**

TOWER **120.900**



MISSED APPROACH

Climb on track 248° to 2500' or above,
then turn RIGHT to LOM KT at 4500' or above,
then according to chart.



OCA(H)		A	B	C	D						
Straight-in Approach	CAT I			1612' (179)	1623' (189)						
Circling				2150' (664)	2270' (778)						
GROUND SPEED		km/h	150	180	210	240	270	300	330	360	390
RATE OF DESCENT		m/s	2.0	2.4	2.7	3.1	3.5	3.9	4.3	4.7	5.1
		ft/min	385	463	540	617	694	771	848	925	1002

① TRANSITION LEVEL:
- FL060 when QNH is 1013 hPa (760mm mercury column) or above;
- FL070 when QNH is 977 hPa (733mm mercury column) or above, but less than 1013 hPa (760mm mercury column);
- FL080 when QNH is less than 977 hPa (733mm mercury column).

② Limiting bearing line 243° from ARP DIST 9-21km GND-FL060.