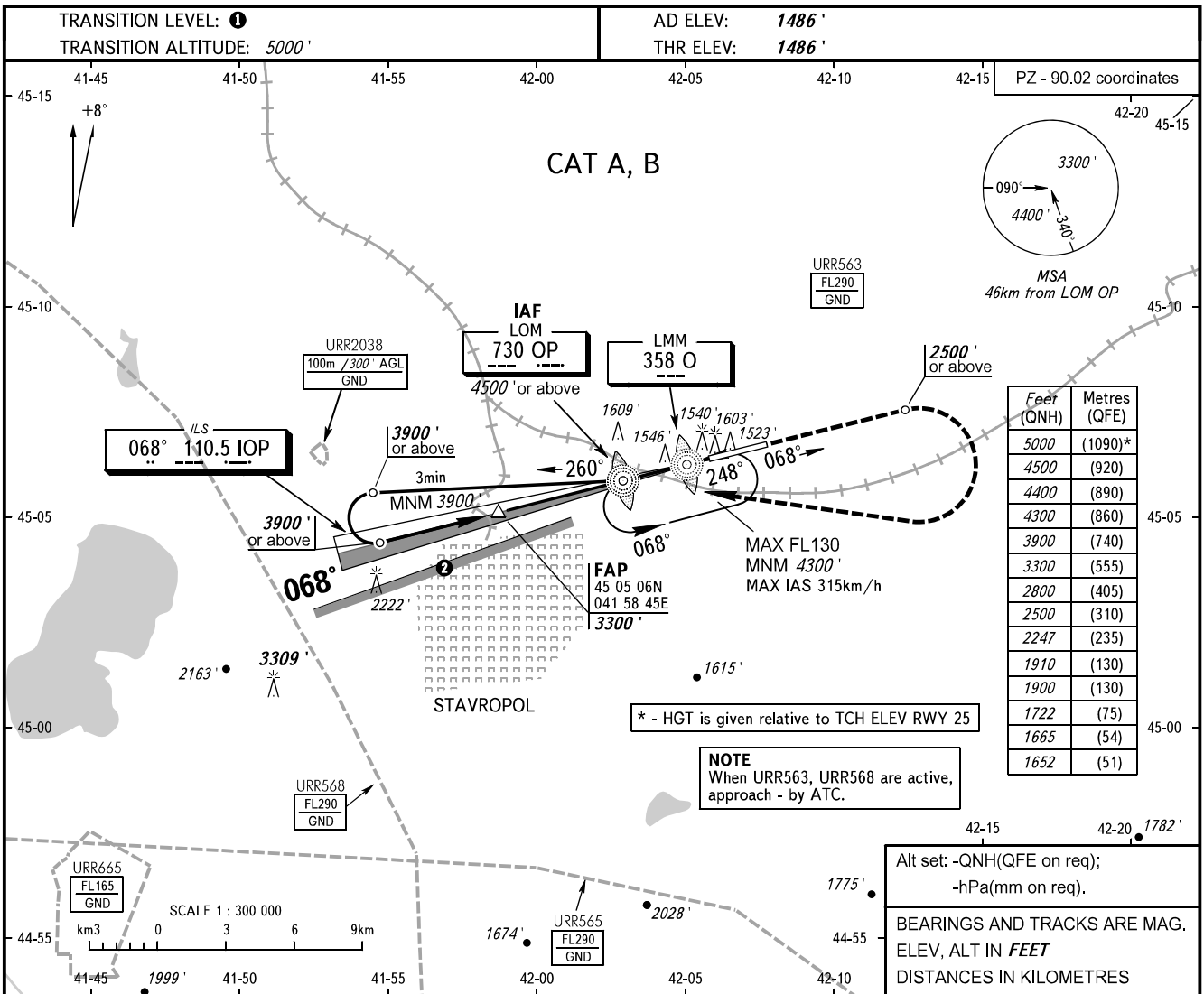


**INSTRUMENT
APPROACH
CHART - ICAO**

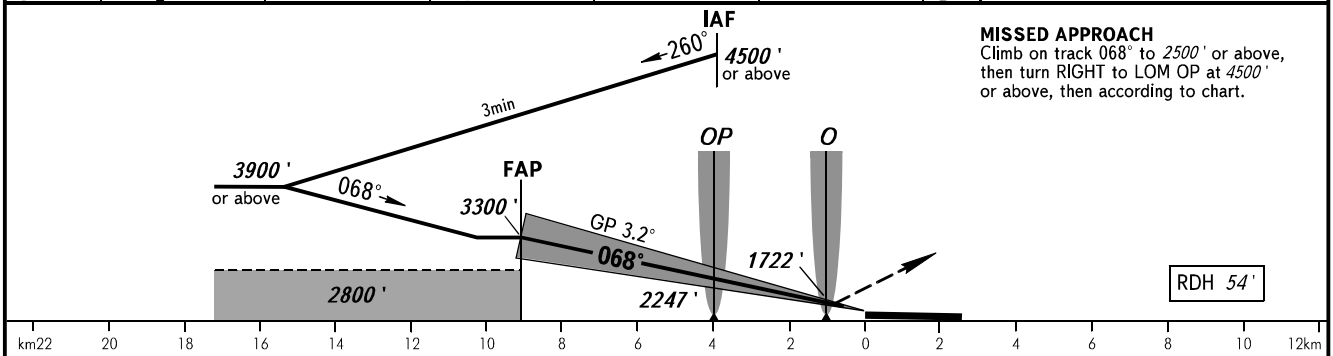
TOWER **120.900**

STAVROPOL, RUSSIA
SHPAKOVSKOYE
ILS Y RWY 07 CAT I



Feet (QNH)	Metres (QFE)
5000	(1090)*
4500	(920)
4400	(890)
4300	(860)
3900	(740)
3300	(555)
2800	(405)
2500	(310)
2247	(235)
1910	(130)
1900	(130)
1722	(75)
1665	(54)
1652	(51)

Alt set: -QNH(QFE on req);
-hPa(mm on req).
BEARINGS AND TRACKS ARE MAG.
ELEV, ALT IN FEET
DISTANCES IN KILOMETRES



MISSED APPROACH
Climb on track 068° to 2500' or above,
then turn RIGHT to LOM OP at 4500' or above,
then according to chart.

OCA(H)		A	B	C	D						
Straight-in	CAT I	1652' (167)	1665' (179)								
	Approach										
Circling		1900' (413)	1910' (418)								
GROUND SPEED		km/h	150	180	210	240	270	300	330	360	390
RATE OF DESCENT		m/s	2.0	2.4	2.7	3.1	3.5	3.9	4.3	4.7	5.1
		ft/min	385	463	540	617	694	771	848	925	1002

- 1 TRANSITION LEVEL:
 - FL060 when QNH is 1013 hPa (760mm mercury column) or above;
 - FL070 when QNH is 977 hPa (733mm mercury column) or above, but less than 1013 hPa (760mm mercury column);
 - FL080 when QNH is less than 977 hPa (733mm mercury column).
- 2 Limiting bearing line 243° from ARP DIST 9-21km GND-FL060.

CHANGE: New chart