

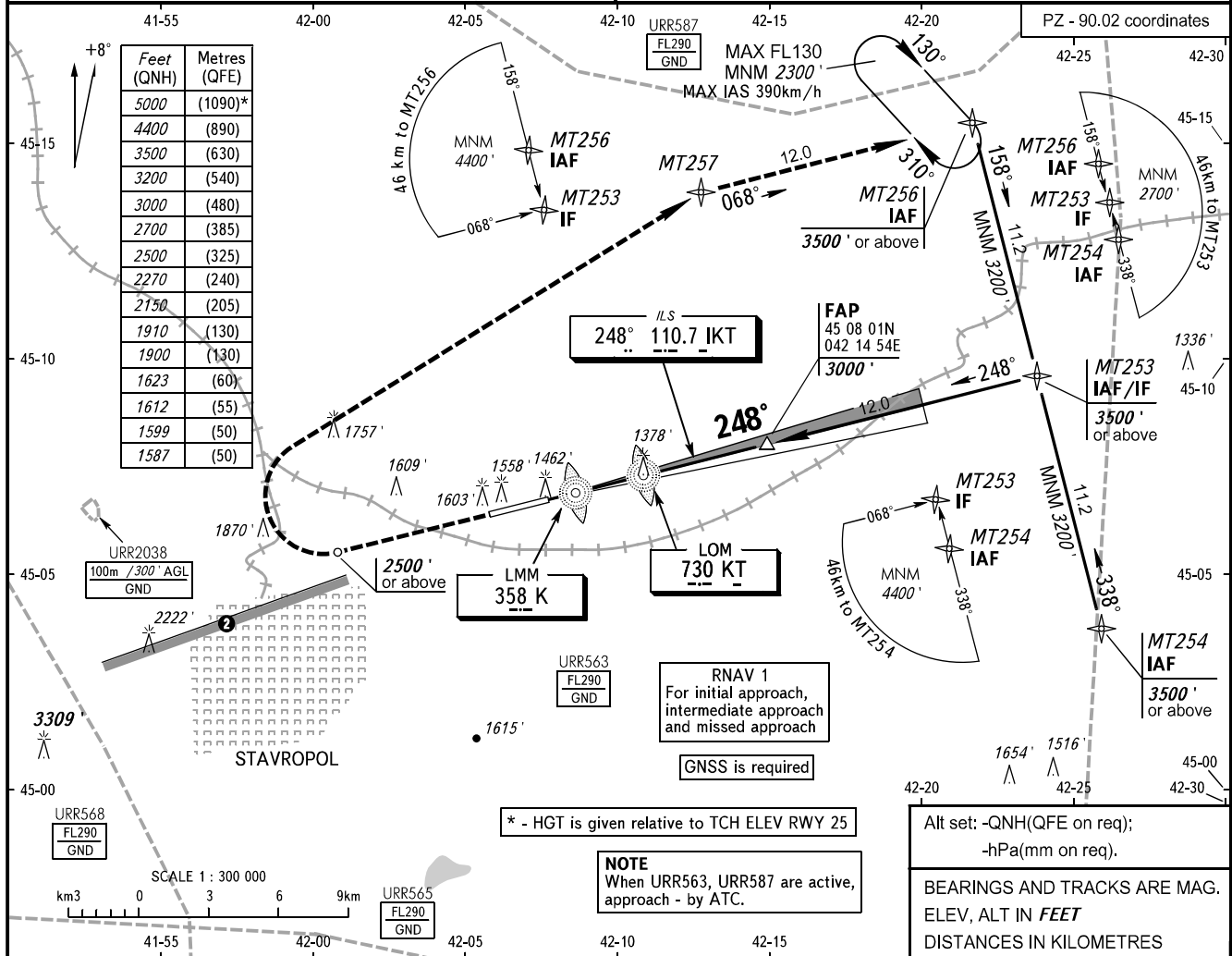
**INSTRUMENT  
APPROACH  
CHART - ICAO**

**STAVROPOL, RUSSIA  
SHPAKOVSKOYE  
ILS Z RWY 25 CAT I**

TOWER **120.900**

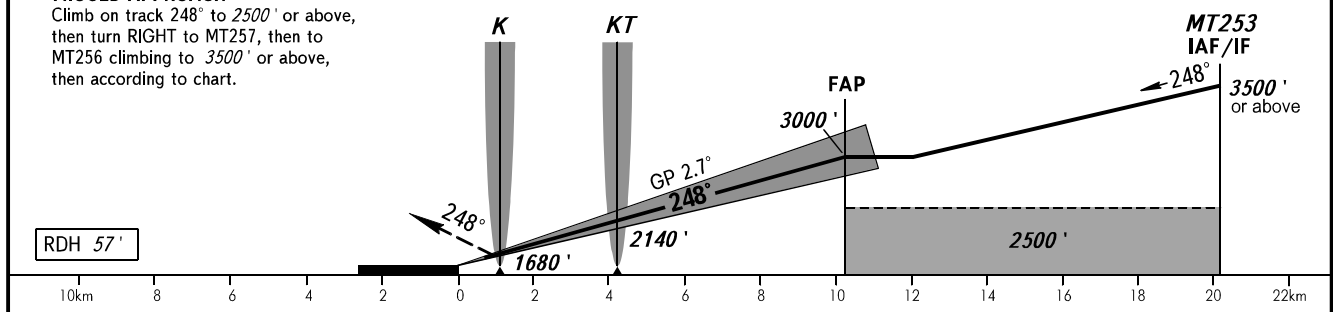
TRANSITION LEVEL: **0**  
TRANSITION ALTITUDE: **5000'**

AD ELEV: **1486'**  
THR ELEV: **1434'**



**MISSED APPROACH**

Climb on track 248° to 2500' or above, then turn RIGHT to MT257, then to MT256 climbing to 3500' or above, then according to chart.



OCA(H)		A	B	C	D
Straight-in	<b>CAT I</b>	1587' (153)	1599' (166)	1612' (179)	1623' (189)
	Approach				
Circling		1900' (413)	1910' (418)	2150' (664)	2270' (778)

- 1** TRANSITION LEVEL:
  - FL060 when QNH is 1013 hPa (760mm mercury column) or above;
  - FL070 when QNH is 977 hPa (733mm mercury column) or above, but less than 1013 hPa (760mm mercury column);
  - FL080 when QNH is less than 977 hPa (733mm mercury column).
- 2** Limiting bearing line 243° from ARP DIST 9-21km GND-FL060.

GROUND SPEED	km/h										
			150	180	210	240	270	300	330	360	390
RATE OF DESCENT	m/s										
			2.0	2.4	2.7	3.1	3.5	3.9	4.3	4.7	5.1
		ft/min									
		385	463	540	617	694	771	848	925	1002	