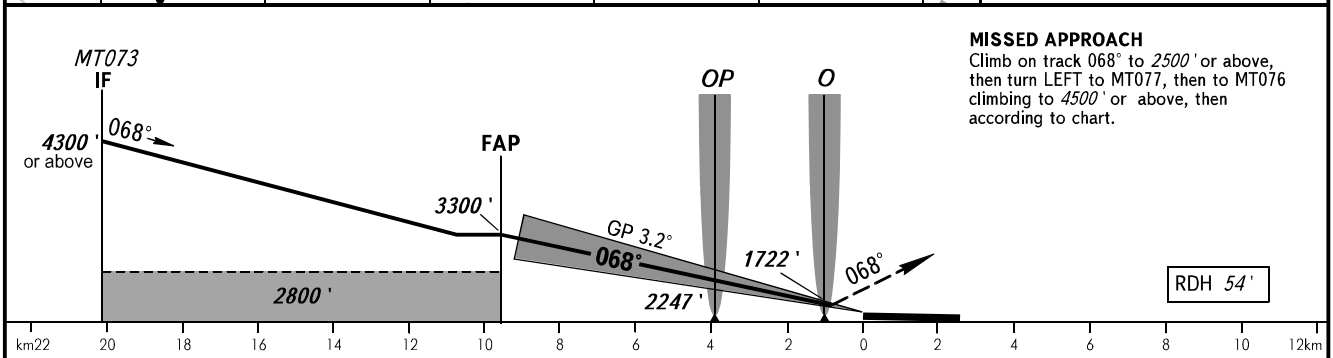
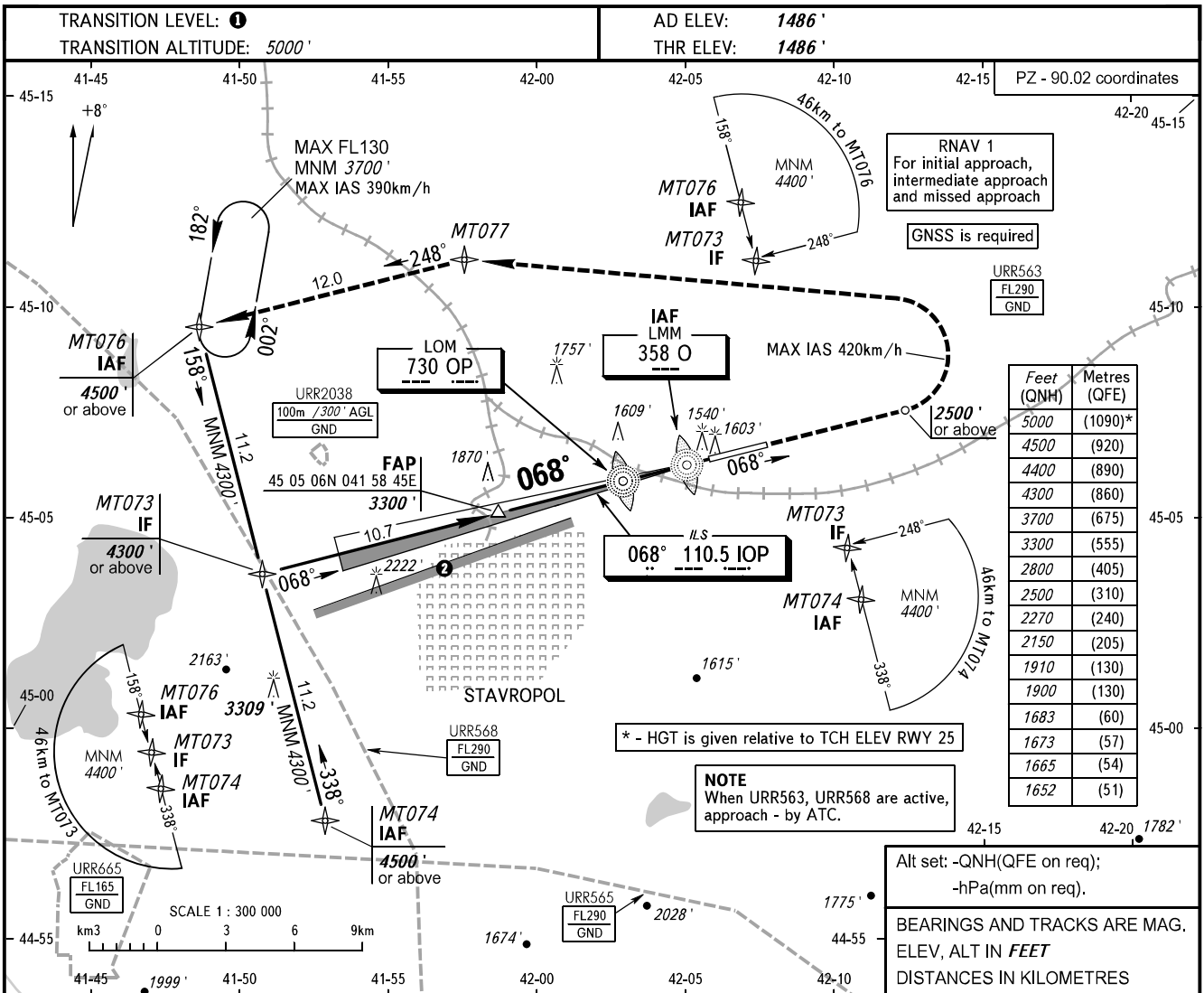


**INSTRUMENT  
APPROACH  
CHART - ICAO**

TOWER **120.900**

**STAVROPOL, RUSSIA**  
SHPAKOVSKOYE  
ILS Z RWY 07 CAT I



	OCA(H)														
	CAT I	A	B	C	D										
Straight-in		1652' (167)	1665' (179)	1673' (187)	1683' (198)										
	Approach														
Circling		1900' (413)	1910' (418)	2150' (664)	2270' (778)										
GROUND SPEED	km/h		150	180	210	240	270	300	330	360	390				
	m/s		2.0	2.4	2.7	3.1	3.5	3.9	4.3	4.7	5.1				
RATE OF DESCENT	ft/min		385	463	540	617	694	771	848	925	1002				

① **TRANSITION LEVEL:**  
- FL060 when QNH is 1013 hPa (760mm mercury column) or above;  
- FL070 when QNH is 977 hPa (733mm mercury column) or above, but less than 1013 hPa (760mm mercury column);  
- FL080 when QNH is less than 977 hPa (733mm mercury column).

② Limiting bearing line 243° from ARP DIST 9-21km GND-FL060.