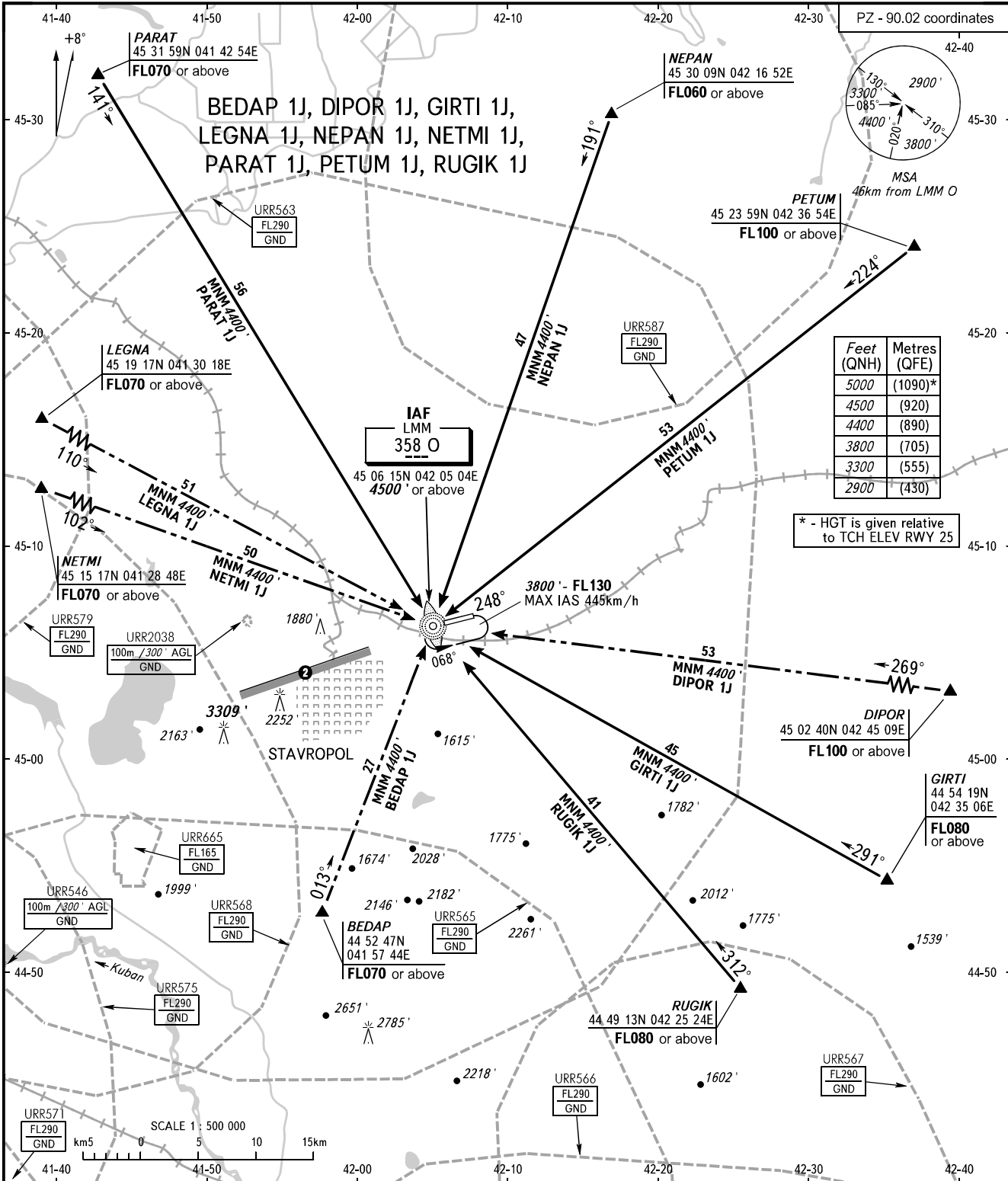


STANDARD ARRIVAL CHART
INSTRUMENT (STAR) - ICAO

STAVROPOL, RUSSIA
SHPAKOVSKOYE
RWY 07

TRANSITION
LEVEL : **1**



TOWER 120.900
APPROACH 121.050

- 1** TRANSITION LEVEL:
- FL060 when QNH is 1013 hPa (760mm mercury column) or above;
- FL070 when QNH is 977 hPa (733mm mercury column) or above, but less than 1013 hPa (760mm mercury column);
- FL080 when QNH is less than 977 hPa (733mm mercury column).

- 2** Limiting bearing line 243° from ARP
DIST 9-21km GND-FL060.

BEARINGS AND TRACKS ARE MAGNETIC
ALTITUDES AND ELEVATIONS IN FEET
DISTANCES IN KILOMETRES