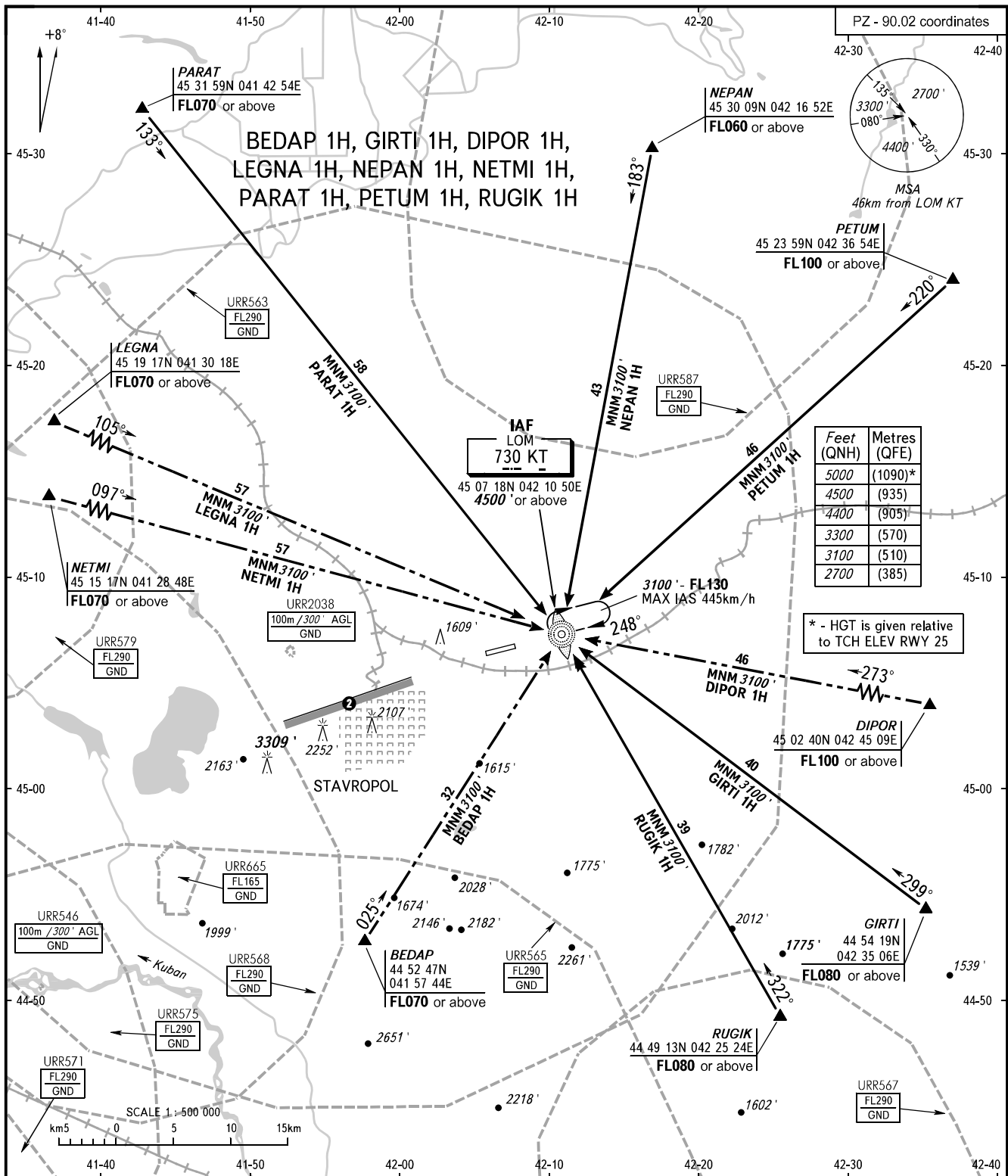


STANDARD ARRIVAL CHART  
INSTRUMENT (STAR) - ICAO

STAVROPOL, RUSSIA  
SHPAKOVSKOYE  
RWY 25

TRANSITION  
LEVEL: 1



TOWER 120.900  
APPROACH 121.050

- 1 TRANSITION LEVEL:  
- FL060 when QNH is 1013 hPa (760mm mercury column) or above;  
- FL070 when QNH is 977 hPa (733mm mercury column) or above, but less than 1013 hPa (760mm mercury column);  
- FL080 when QNH is less than 977 hPa (733mm mercury column).
- 2 Limiting bearing line 243° from ARP  
DIST 9-21km GND-FL060.

BEARINGS AND TRACKS ARE MAGNETIC  
ALTITUDES AND ELEVATIONS IN FEET  
DISTANCES IN KILOMETRES

CHANGE: New chart