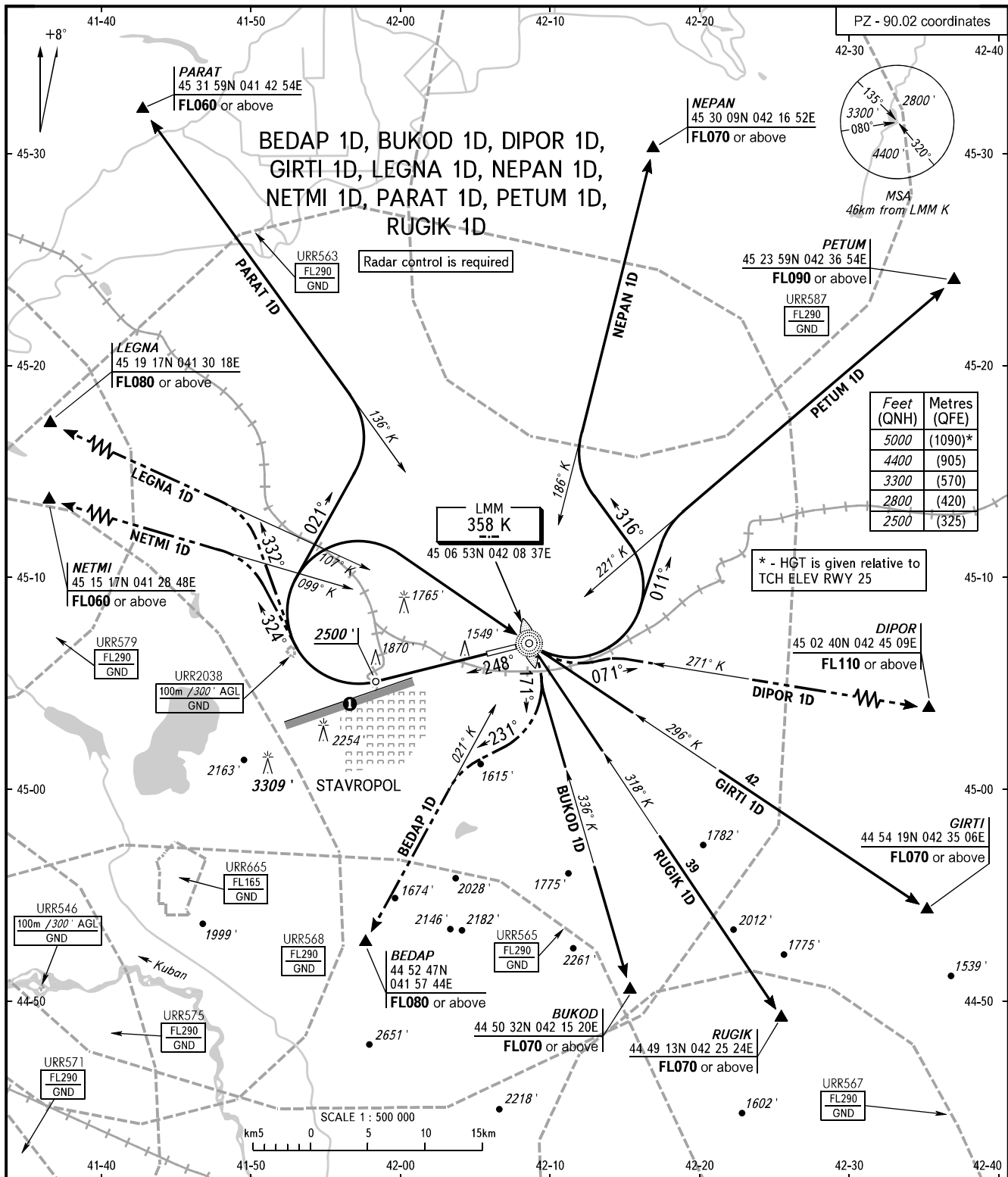


STANDARD DEPARTURE CHART
INSTRUMENT (SID) - ICAO

TRANSITION
ALTITUDE: 5000'

STAVROPOL, RUSSIA
SHPAKOVSKOYE
RWY 25



TOWER 120.900
APPROACH 121.050

① Limiting bearing line 243° from ARP
DIST 9-21km GND-FL060.

BEARINGS AND TRACKS ARE MAGNETIC
ALTITUDES AND ELEVATIONS IN FEET
DISTANCES IN KILOMETRES