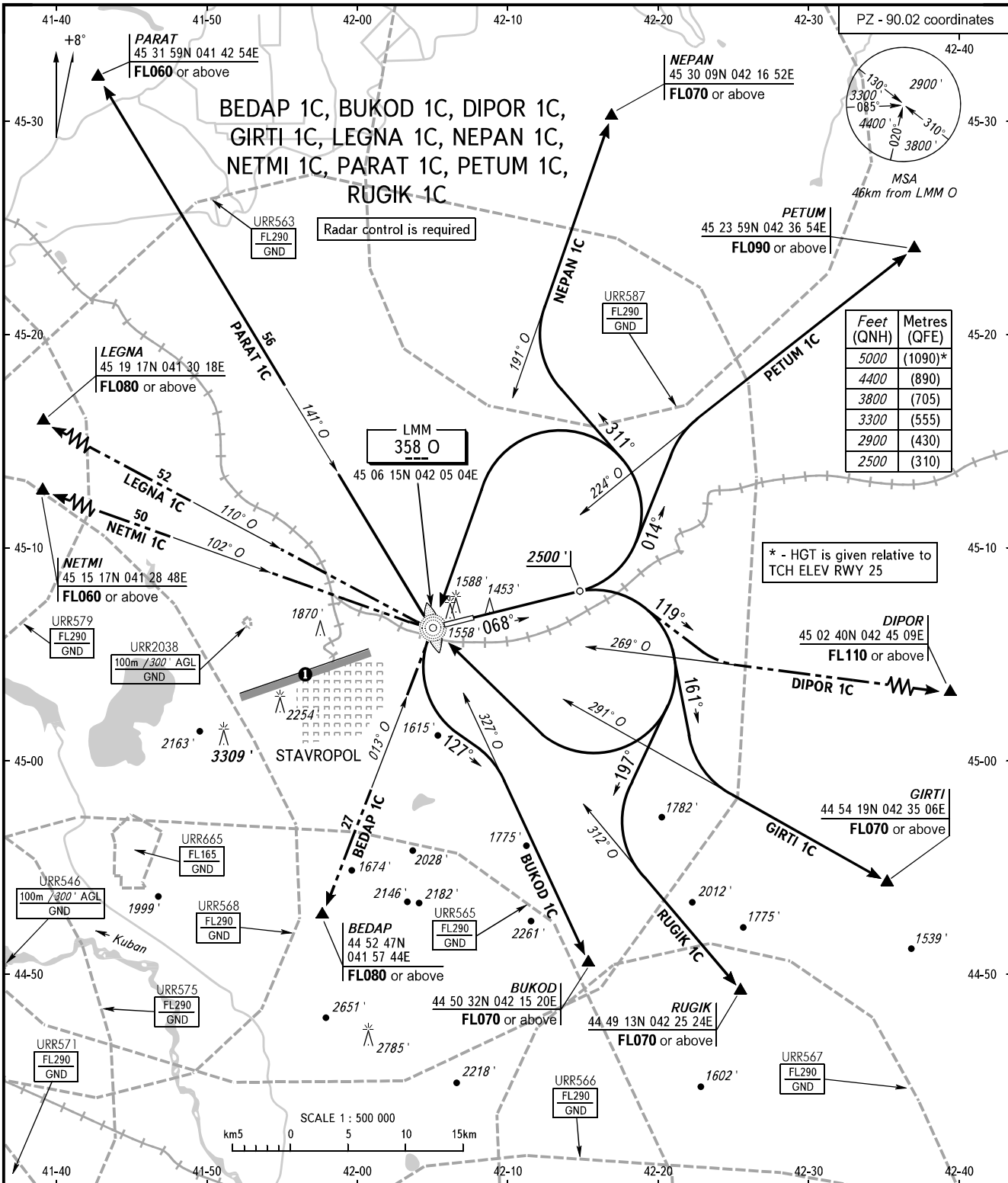


STANDARD DEPARTURE CHART
INSTRUMENT (SID) - ICAO

TRANSITION
ALTITUDE: 5000'

STAVROPOL, RUSSIA
SHPAKOVSKOYE
RWY 07



TOWER 120.900
APPROACH 121.050

WARNING
The minimum climb gradients are as follows (required due to the airspace structure):
- 4.6% up to FL090 for SID PETUM 1C;
- 5.7% up to FL110 for SID DIPOR 1C.

① Limiting bearing line 243° from ARP
DIST 9-21km GND-FL060.

BEARINGS AND TRACKS ARE MAGNETIC
ALTITUDES AND ELEVATIONS IN FEET
DISTANCES IN KILOMETRES

CHANGE: New chart