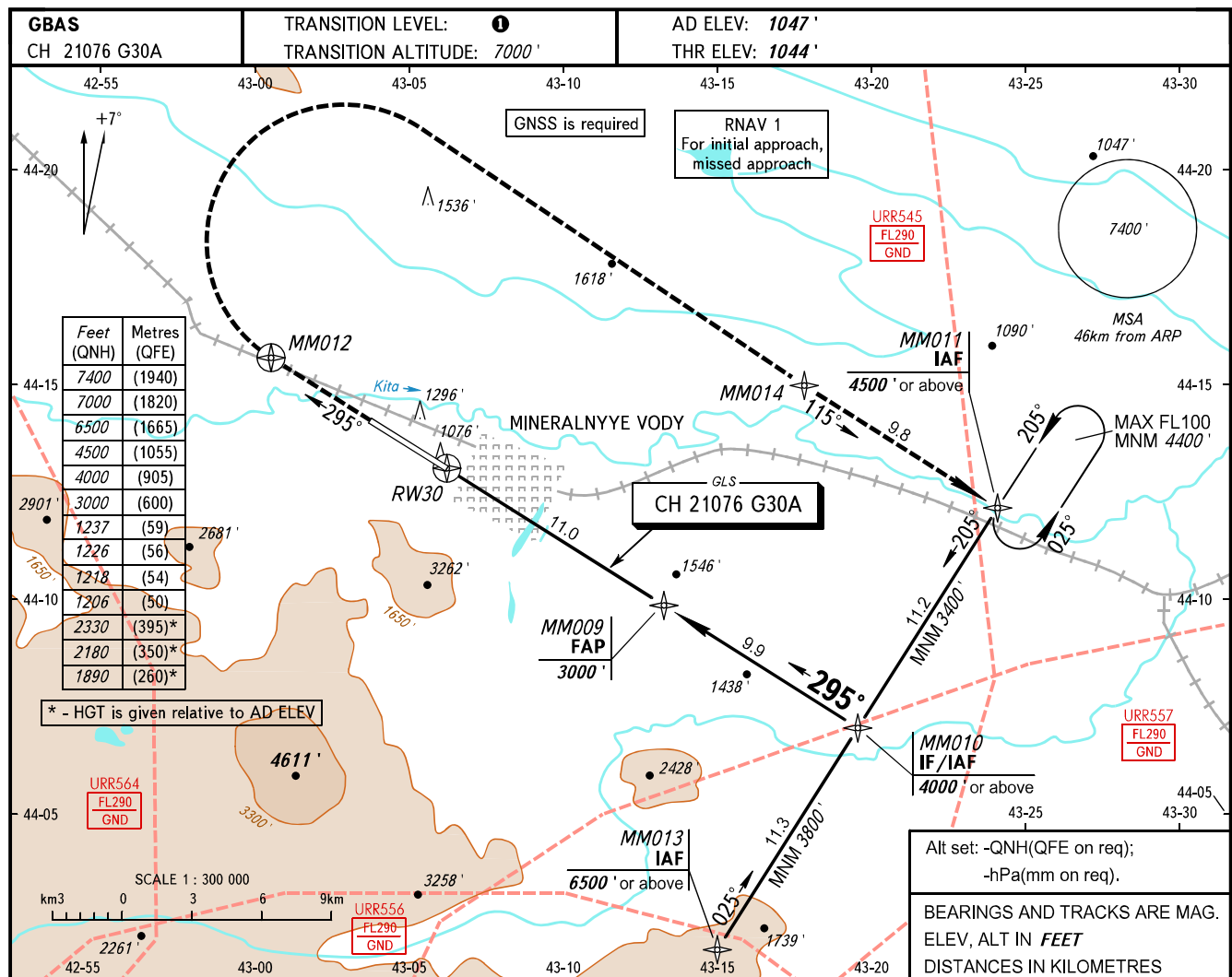


**INSTRUMENT
APPROACH
CHART - ICAO**

KRUG	120.700
START	128.000

**MINERALNYYE VODY, RUSSIA
MINERALNYYE VODY
GLS RWY 30**

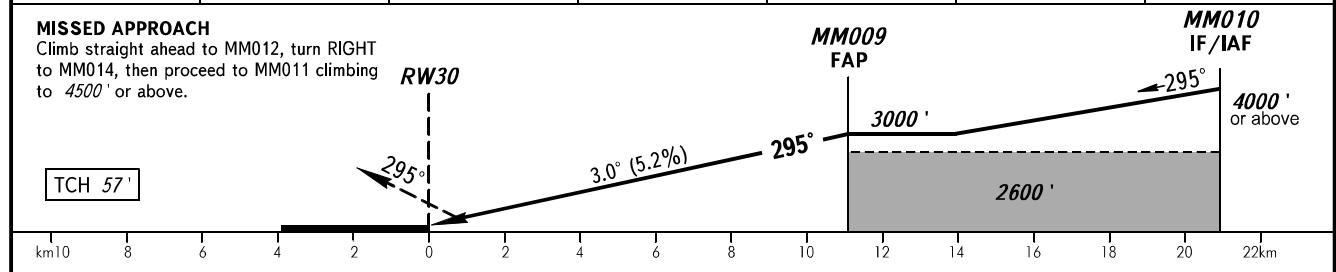


Feet (QNH)	Metres (QFE)
7400	(1940)
7000	(1820)
6500	(1665)
4500	(1055)
4000	(905)
3000	(600)
1237	(59)
1226	(56)
1218	(54)
7206	(30)
2330	(395)*
2180	(350)*
1890	(260)*

* - HGT is given relative to AD ELEV

Alt set: -QNH(QFE on req);
-hPa(mm on req).
BEARINGS AND TRACKS ARE MAG.
ELEV, ALT IN FEET
DISTANCES IN KILOMETRES

DIST RW30	2.0	4.0	6.0	8.0	10.0	11.0
ALTITUDE	1440'	1780'	2130'	2470'	2810'	3000'



OCA(H)		A	B	C	D	1 TRANSITION LEVEL: - FL080 when QNH is 1013 hPa (760mm mercury column) or above; - FL090 when QNH is 977 hPa (733mm mercury column) or above, but less than 1013 hPa (760mm mercury column); - FL100 when QNH is less than 977 hPa (733mm mercury column). Visual manoeuvring south of the AD is PROHIBITED. NOTE Procedure is not AVBL when URR545, URR556, URR557 are active.				
Straight-in Approach	CAT I	1206' (162')	1218' (174')	1226' (182')	1237' (193')					
	Circling	1890' (840')	1890' (840')	2180' (1130')	2330' (1280')					
GROUND SPEED	km/h	150	180	210	240	270	300	330	360	390
RATE OF DESCENT	m/s	2.2	2.6	3.0	3.5	3.9	4.3	4.8	5.2	5.6
	ft/min	427	512	597	682	768	853	938	1024	1109