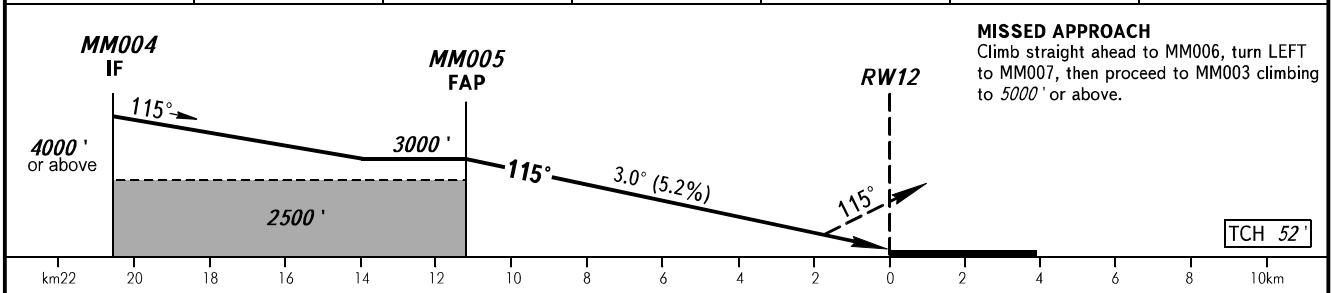
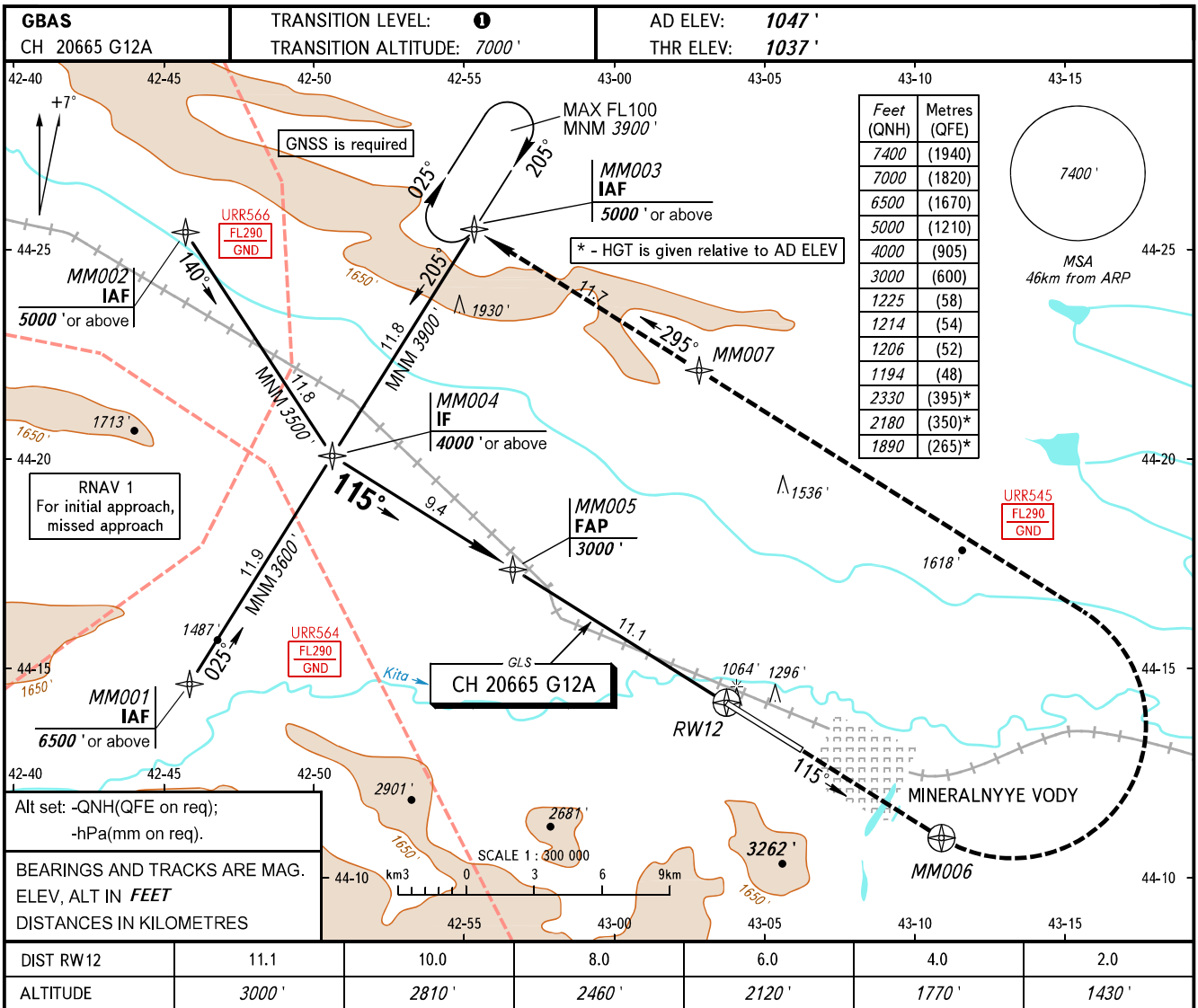


**INSTRUMENT  
APPROACH  
CHART - ICAO**

KRUG **120.700**  
START **128.000**

**MINERALNYE VODY, RUSSIA**  
MINERALNYE VODY  
GLS RWY 12



OCA(H)		A	B	C	D						
Straight-in Approach	CAT I	1194' (157')	1206' (169')	1214' (177')	1225' (188')						
Circling		1890' (840')	1890' (840')	2180' (1130')	2330' (1280')						
GROUND SPEED		km/h	150	180	210	240	270	300	330	360	390
RATE OF DESCENT		m/s	2.2	2.6	3.0	3.5	3.9	4.3	4.8	5.2	5.6
		ft/min	427	512	597	682	768	853	938	1024	1109

**1** TRANSITION LEVEL:  
 - FL080 when QNH is 1013 hPa (760mm mercury column) or above;  
 - FL090 when QNH is 977 hPa (733mm mercury column) or above, but less than 1013 hPa (760mm mercury column);  
 - FL100 when QNH is less than 977 hPa (733mm mercury column).  
 Visual manoeuvring south of the AD is PROHIBITED.

**NOTE**  
 Procedure is not AVBL when URR545, URR564, URR566 are active.

CHANGE: New chart