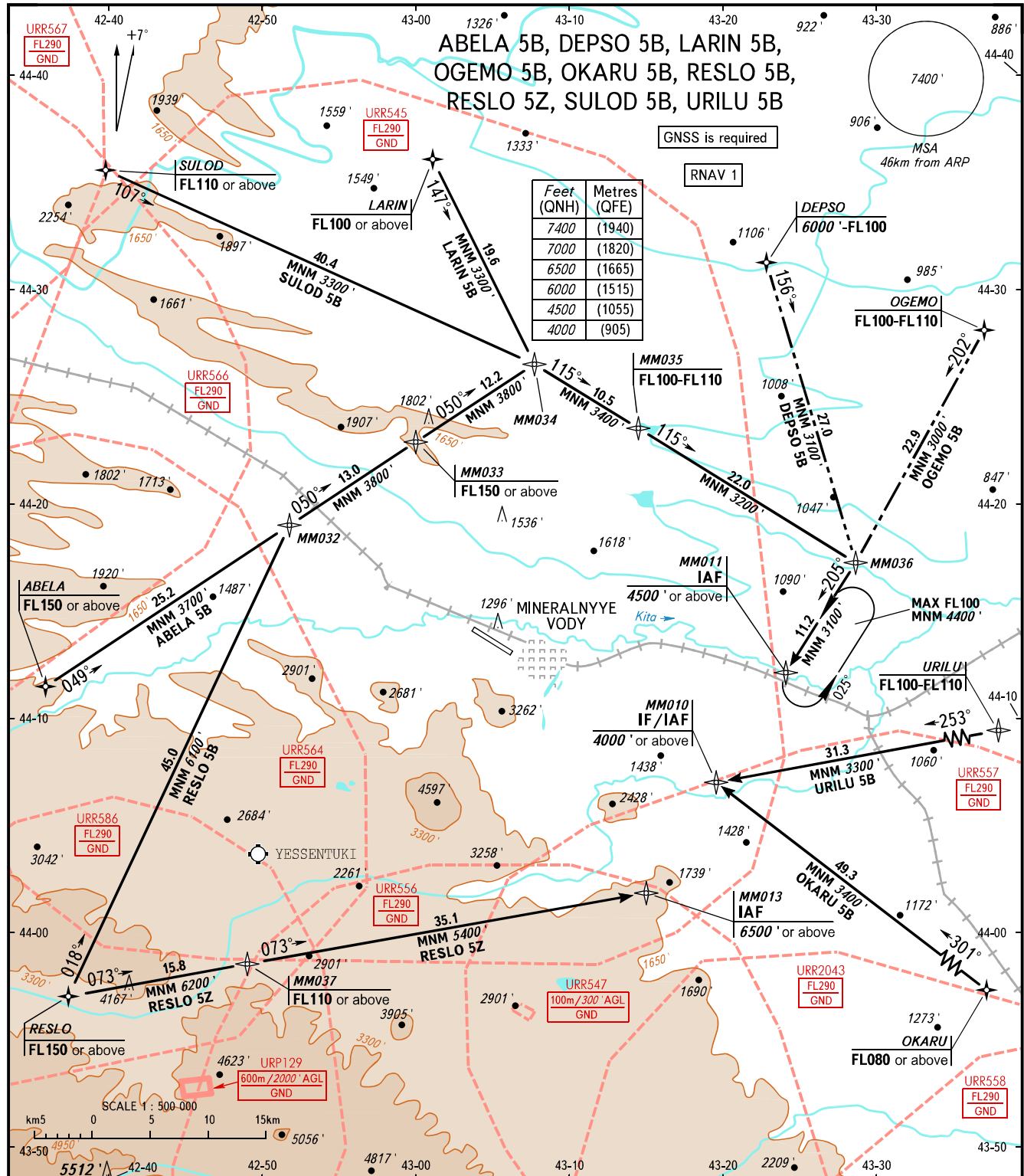


STANDARD ARRIVAL CHART  
INSTRUMENT (STAR) - ICAO

TRANSITION  
LEVEL: 1

MINERALNYYE VODY, RUSSIA  
MINERALNYYE VODY  
RNAV RWY 30



APPROACH 119.300  
KRUG 120.700  
START 128.000

**NOTE:**  
 ABELA 5B is not AVBL, when URR545, URR564, URR566 are active.  
 DEPSO 5B, LARIN 5B, OGEMO 5B are not AVBL, when URR545 is active.  
 OKARU 5B is not AVBL, when URR545, URR557, URR2043, URR558, URR508 are active.  
 RESLO 5B is not AVBL, when URR545, URR564, URR586, are active.  
 RESLO 5Z is not AVBL, when URR545, URR564, URR586, URR556, URR557 are active.  
 SULOD 5B is not AVBL, when URR545, URR566, URR567 are active.  
 URILU 5B is not AVBL, when URR545, URR557 are active.

**1** TRANSITION LEVEL:  
 - FL080 when QNH is 1013 hPa (760mm mercury column) or above;  
 - FL090 when QNH is 977 hPa (733mm mercury column) or above, but less than 1013 hPa (760mm mercury column);  
 - FL100 when QNH is less than 977 hPa (733mm mercury column).

BEARINGS AND TRACKS ARE MAGNETIC  
 ALTITUDES AND ELEVATIONS IN FEET  
 DISTANCES IN KILOMETRES

Alt set: -QNH(QFE on req);  
 -hPa(mm on req).