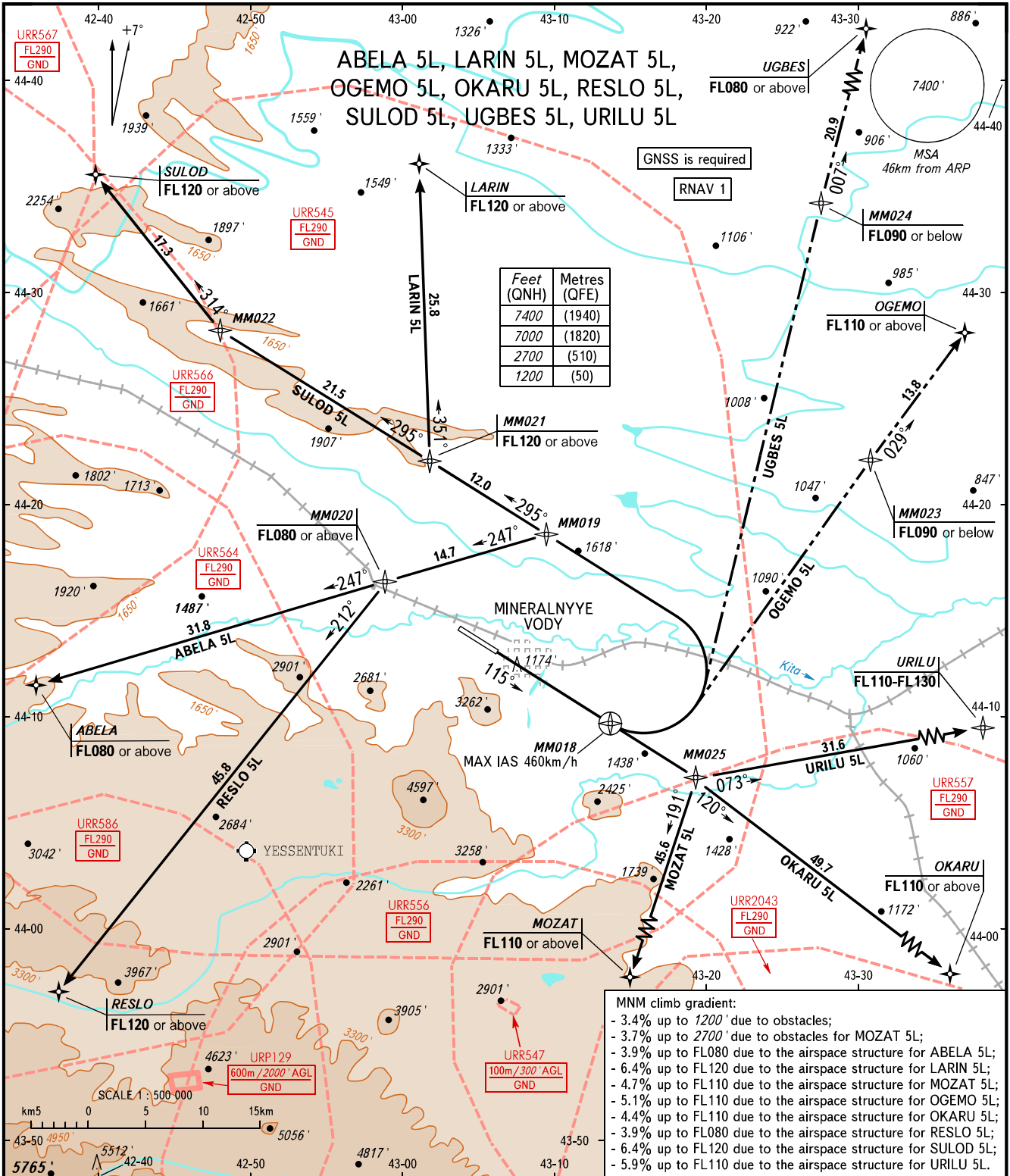


STANDARD DEPARTURE CHART
INSTRUMENT (SID) - ICAO

TRANSITION
ALTITUDE: 7000'

MINERALNYE VODY, RUSSIA
MINERALNYE VODY
RNAV RWY 12



- MMN climb gradient:
- 3.4% up to 1200' due to obstacles;
 - 3.7% up to 2700' due to obstacles for MOZAT 5L;
 - 3.9% up to FLO80 due to the airspace structure for ABELA 5L;
 - 6.4% up to FL120 due to the airspace structure for LARIN 5L;
 - 4.7% up to FL110 due to the airspace structure for MOZAT 5L;
 - 5.1% up to FL110 due to the airspace structure for OGEMO 5L;
 - 4.4% up to FL110 due to the airspace structure for OKARU 5L;
 - 3.9% up to FLO80 due to the airspace structure for RESLO 5L;
 - 6.4% up to FL120 due to the airspace structure for SULOD 5L;
 - 5.9% up to FL110 due to the airspace structure for URILU 5L.

START 128.000
KRUG 120.700
APPROACH 119.300

NOTE:
ABELA 5L is not AVBL, when URR545, URR564, URR566, URR556, URR557 are active.
LARIN 5L, OGEMO 5L, UGBES 5L, URILU 5L are not AVBL, when URR545, URR557 are active.
MOZAT 5L is not AVBL, when URR545, URR556, URR557, URR2043 are active.
OKARU 5L is not AVBL, when URR545, URR557, URR2043, URR558, URR508 are active.
RESLO 5L is not AVBL, when URR545, URR564, URR586, URR557 are active.
SULOD 5L is not AVBL, when URR545, URR566, URR567, URR557 are active.

BEARINGS AND TRACKS ARE MAGNETIC
ALTITUDES AND ELEVATIONS IN FEET
DISTANCES IN KILOMETRES

Alt set: -QNH(QFE on req);
-hPa(mm on req).

CHANGE: New chart