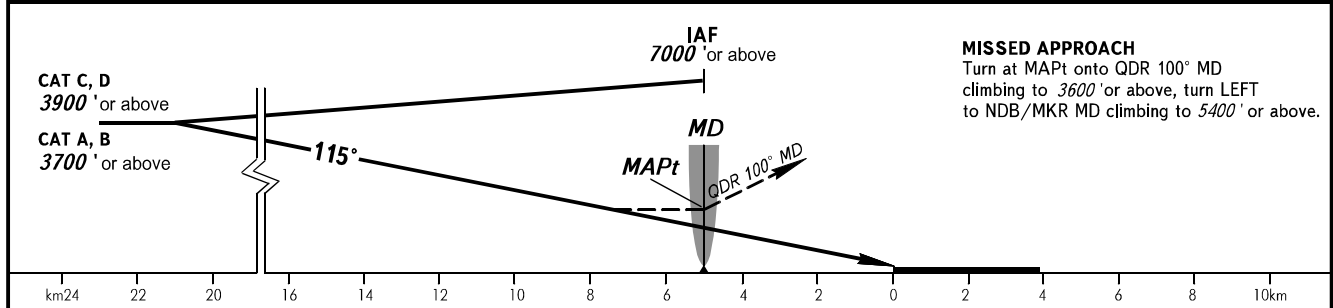
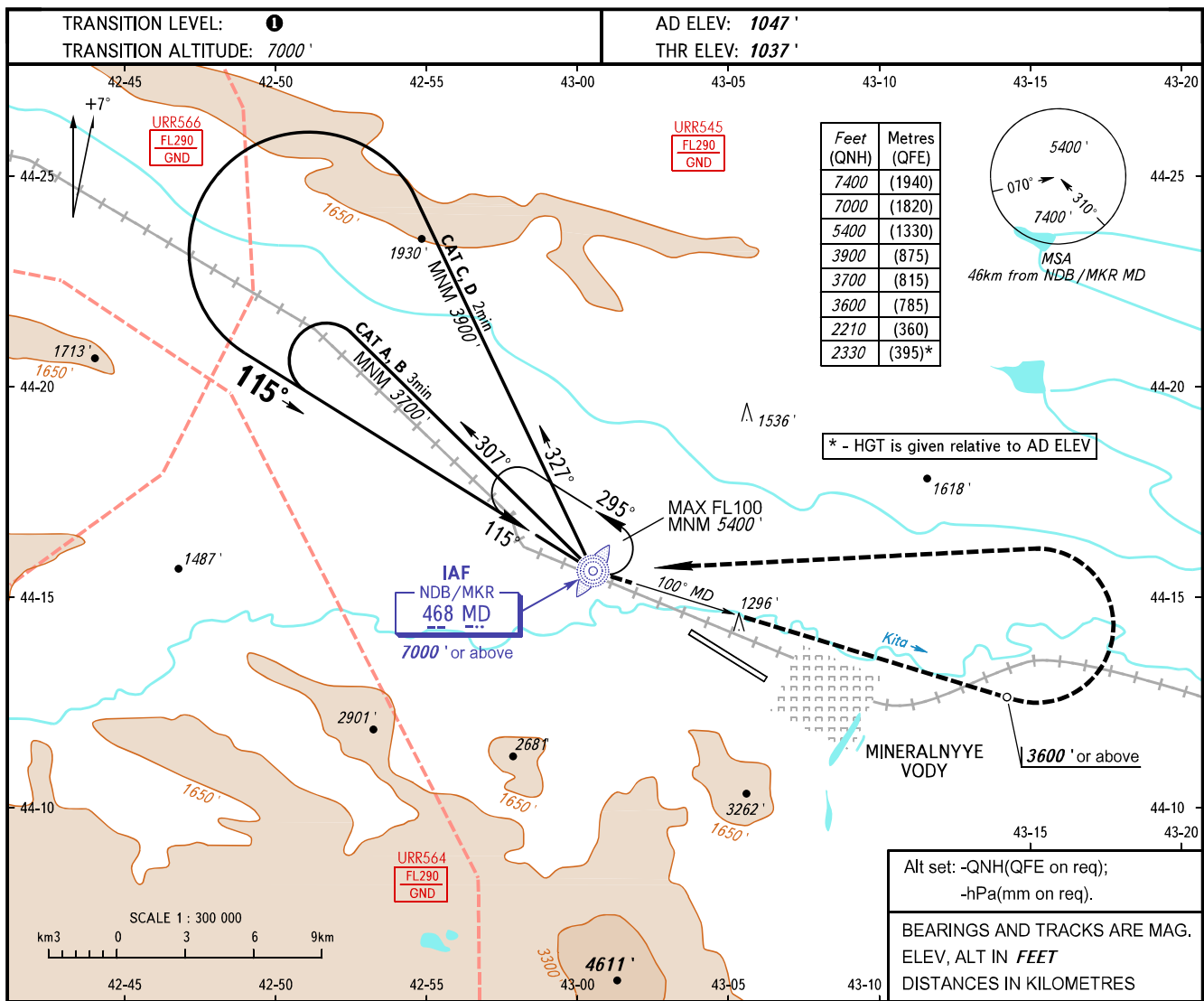


**INSTRUMENT
APPROACH
CHART - ICAO**

KRUG	120.700
START	128.000

MINERALNYYE VODY, RUSSIA
MINERALNYYE VODY
NDB B RWY 12



OCA(H)	A	B	C	D
Straight-in Approach				
Circling	2210' (1180')	2210' (1180')	2210' (1180')	2330' (1280')

1 TRANSITION LEVEL:
- FL080 when QNH is 1013 hPa (760mm mercury column) or above;
- FL090 when QNH is 977 hPa (733mm mercury column) or above, but less than 1013 hPa (760mm mercury column);
- FL100 when QNH is less than 977 hPa (733mm mercury column).
Visual manoeuvring south of the AD is PROHIBITED.

NOTE:
1. Procedure is not AVBL when URR545, URR564, URR566 are active.
2. Turn before MAPt is PROHIBITED.
3. MAPt at NDB/MKR MD.
Timing not authorized for defining MAPt.