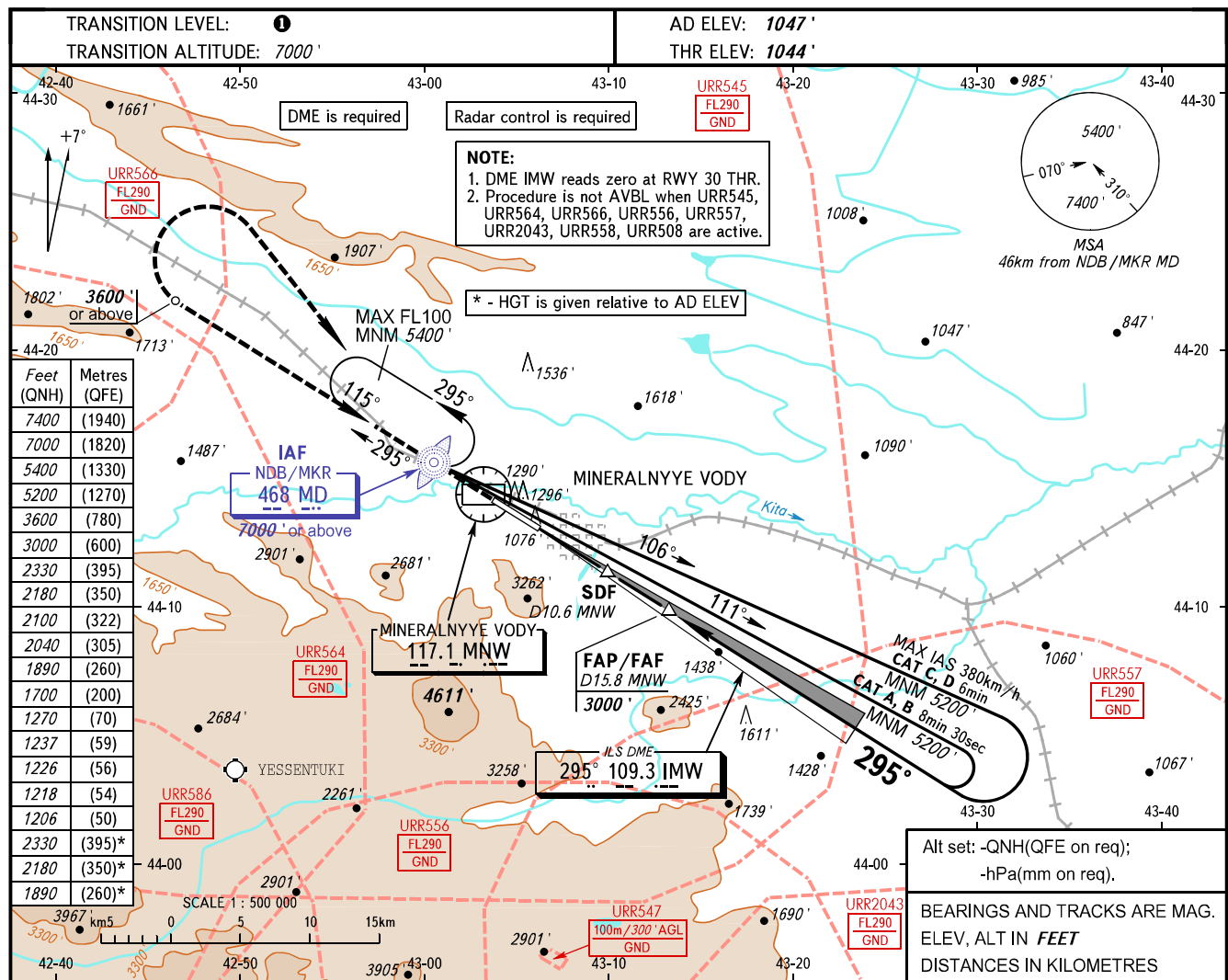


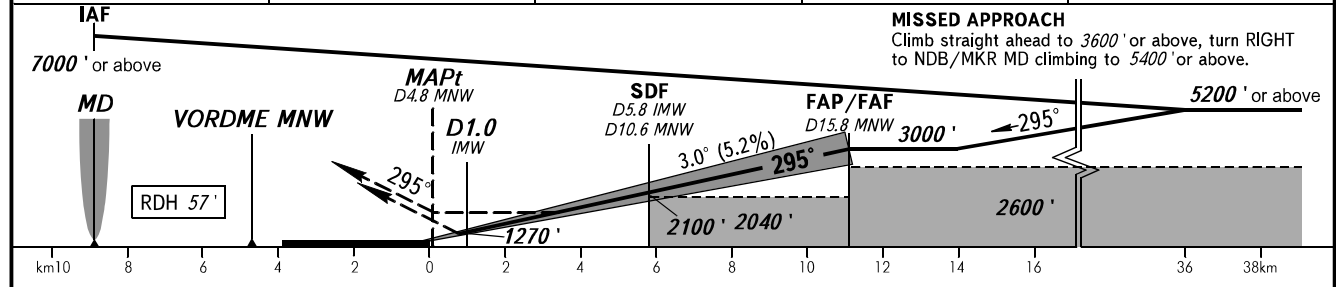
**INSTRUMENT
APPROACH
CHART - ICAO**

KRUG **120.700**
START **128.000**

MINERALNYYE VODY, RUSSIA
MINERALNYYE VODY
ILS X CAT I, LOC X RWY 30



DME MNW	11.0	13.0	15.0	15.8
ALTITUDE	2184'	2528'	2872'	3000'



OCA(H)		A	B	C	D	
Straight-in Approach	CAT I	1206' (162')	1218' (174')	1226' (182')	1237' (193')	
	LOC	With SDF	1700' (660')	1700' (660')	1700' (660')	1700' (660')
		WO SDF	2040' (1000')	2040' (1000')	2040' (1000')	2040' (1000')
Circling		1890' (840')	1890' (840')	2180' (1130')	2330' (1280')	

① TRANSITION LEVEL:
- FL080 when QNH is 1013 hPa (760mm mercury column) or above;
- FL090 when QNH is 977 hPa (733mm mercury column) or above, but less than 1013 hPa (760mm mercury column);
- FL100 when QNH is less than 977 hPa (733mm mercury column).
Visual manoeuvring south of the AD is PROHIBITED.

GROUND SPEED	km/h	150	180	210	240	270	300	330	360	390
FAF-MAPt 10945m	min:sec	4:23	3:39	3:08	2:44	2:26	2:11	1:59	1:49	1:41
RATE OF DESCENT	m/s	2.2	2.6	3.0	3.5	3.9	4.3	4.8	5.2	5.6
	ft/min	427	512	597	682	768	853	938	1024	1109