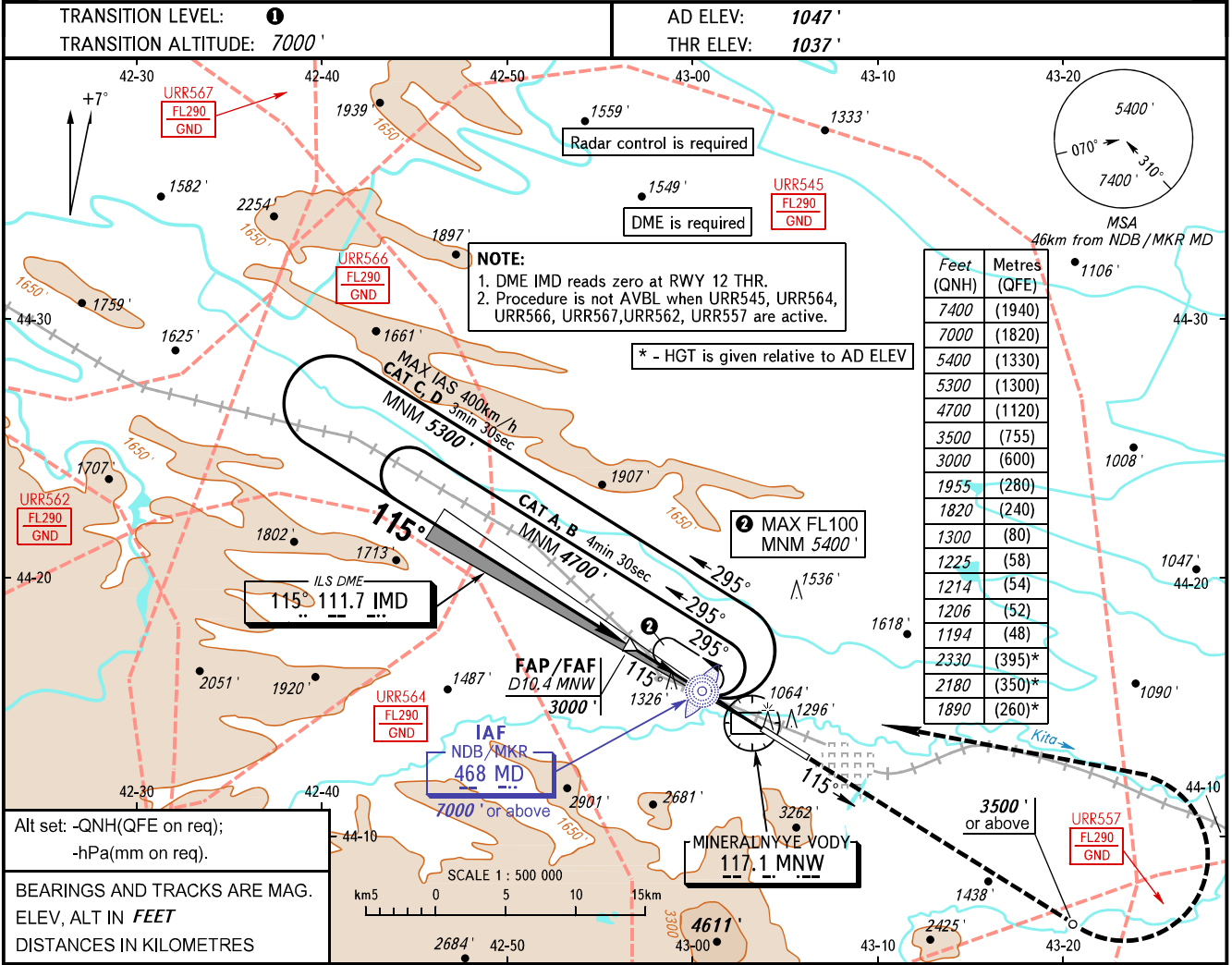


**INSTRUMENT
APPROACH
CHART - ICAO**

KRUG **120.700**
START **128.000**

MINERALNYYE VODY, RUSSIA
MINERALNYYE VODY
ILS X CAT I/II, LOC X RWY 12

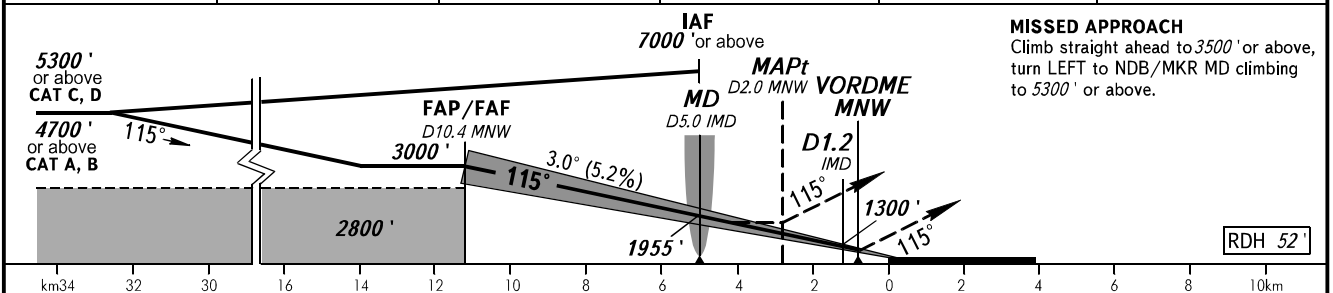


Feet (QNH)	Metres (QFE)
7400	(1940)
7000	(1820)
5400	(1330)
5300	(1300)
4700	(1120)
3500	(755)
3000	(600)
1955	(280)
1820	(240)
1300	(80)
1225	(58)
1214	(54)
1206	(52)
1194	(48)
2330	(395)*
2180	(350)*
1890	(260)*

Alt set: -QNH(QFE on req);
-hPa(mm on req).

BEARINGS AND TRACKS ARE MAG.
ELEV, ALT IN FEET
DISTANCES IN KILOMETRES

DME MNW	10.4	10.0	8.0	6.0	4.0
ALTITUDE	3000'	2946'	2602'	2258'	1914'



MISSED APPROACH
Climb straight ahead to 3500' or above, turn LEFT to NDB/MKR MD climbing to 5300' or above.

OCA(H)		A	B	C	D
Straight-in Approach	CAT I	1194' (157')	1206' (169')	1214' (177')	1225' (188')
	CAT II	(69')	(86')	(98')	(112')
	LOC	1820' (790')	1820' (790')	1820' (790')	1820' (790')
Circling		1890' (840')	1890' (840')	2180' (1130')	2330' (1280')

TRANSITION LEVEL:
- FL080 when QNH is 1013 hPa (760mm mercury column) or above;
- FL090 when QNH is 977 hPa (733mm mercury column) or above, but less than 1013 hPa (760mm mercury column);
- FL100 when QNH is less than 977 hPa (733mm mercury column).
Visual manoeuvring south of the AD is PROHIBITED.

GROUND SPEED	km/h	150	180	210	240	270	300	330	360	390
FAF-MAPt 8316m	min:sec		3:20	2:46	2:23	2:05	1:51	1:40	1:31	1:23
RATE OF DESCENT	m/s		2.2	2.6	3.0	3.5	3.9	4.3	4.8	5.2
	ft/min		427	512	597	682	768	853	938	1024

CHANGE: New chart