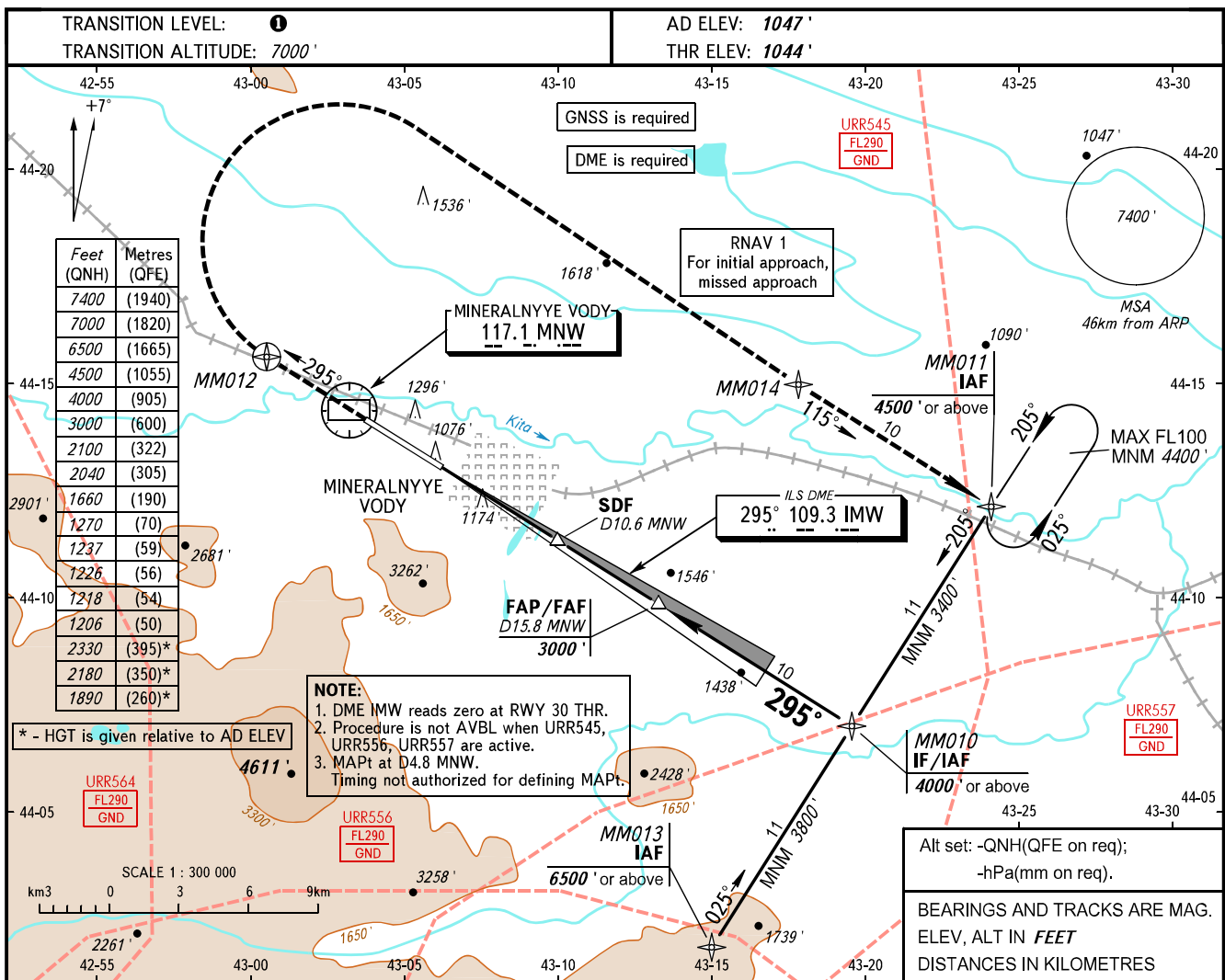


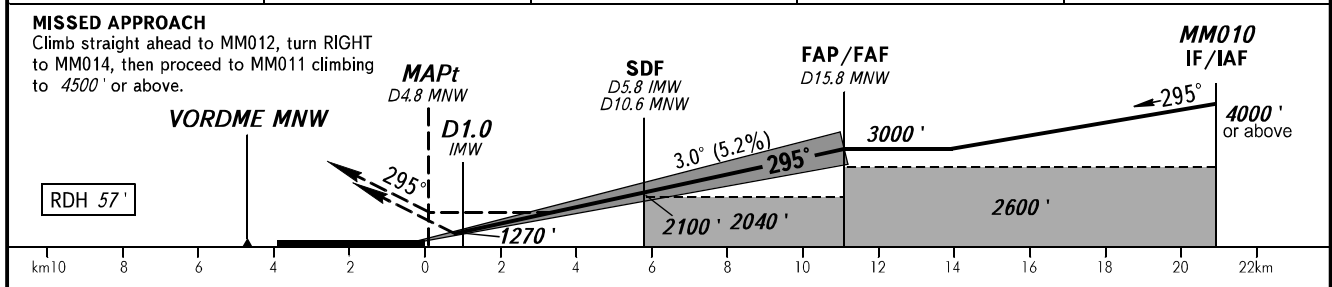
INSTRUMENT  
APPROACH  
CHART - ICAO

KRUG **120.700**  
START **128.000**

MINERALNYYE VODY, RUSSIA  
MINERALNYYE VODY  
ILS Z CAT I, LOC Z RWY 30



DME MNW	11.0	13.0	15.0	15.8
ALTITUDE	2184'	2528'	2872'	3000'



OCA(H)		A	B	C	D						
Straight-in Approach	CAT I	1206' (162')	1218' (174')	1226' (182')	1237' (193')						
	LOC	With SDF	1660' (610')	1660' (610')	1660' (610')	1660' (610')					
		WO SDF	2040' (1000')	2040' (1000')	2040' (1000')	2040' (1000')					
Circling		1890' (840')	1890' (840')	2180' (1130')	2330' (1280')						
GROUND SPEED		km/h	150	180	210	240	270	300	330	360	390
RATE OF DESCENT		m/s	2.2	2.6	3.0	3.5	3.9	4.3	4.8	5.2	5.6
		ft/min	427	512	597	682	768	853	938	1024	1109

**TRANSITION LEVEL:**

- FL080 when QNH is 1013 hPa (760mm mercury column) or above;
- FL090 when QNH is 977 hPa (733mm mercury column) or above, but less than 1013 hPa (760mm mercury column);
- FL100 when QNH is less than 977 hPa (733mm mercury column).

Visual manoeuvring south of the AD is PROHIBITED.