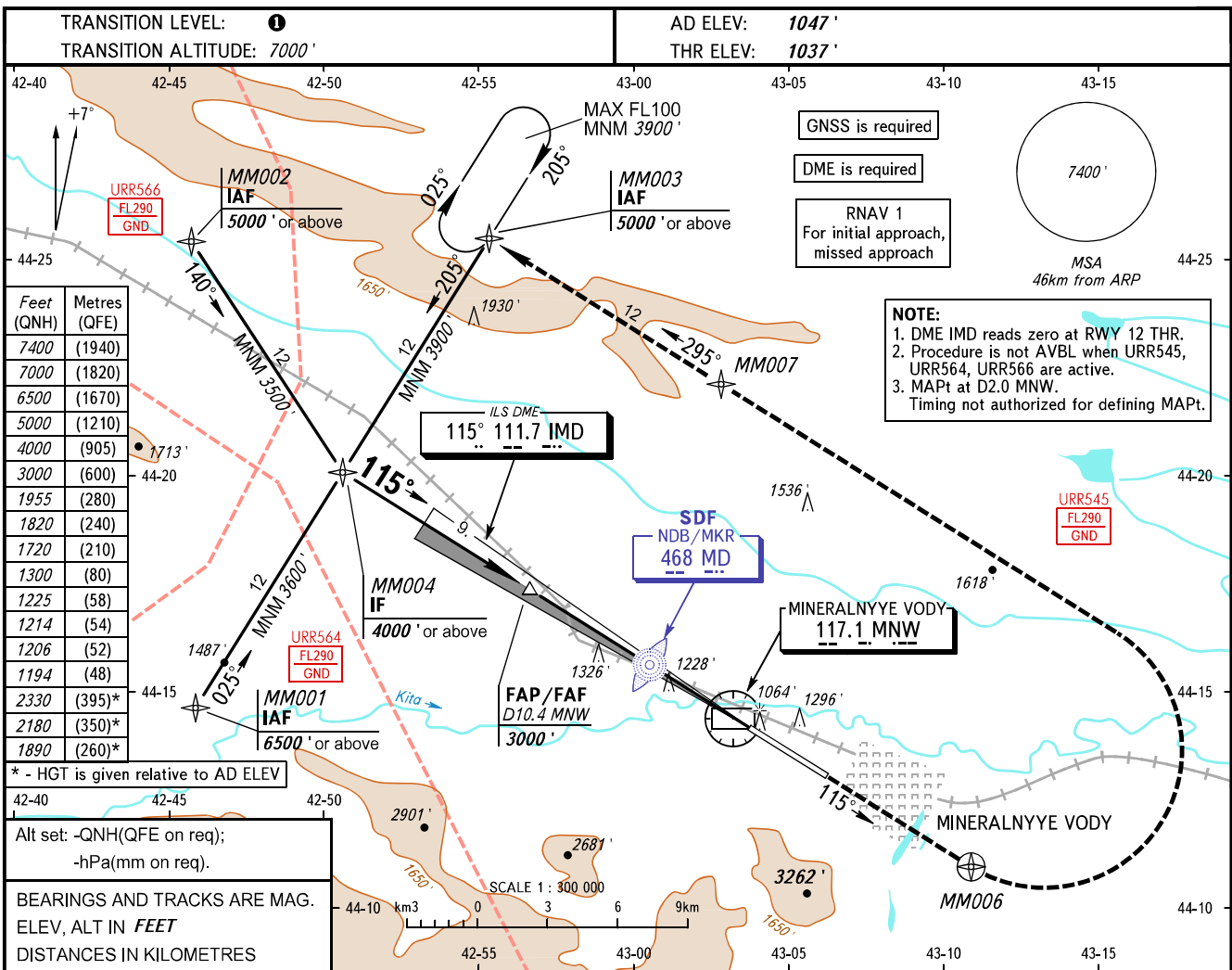


**INSTRUMENT
APPROACH
CHART - ICAO**

KRUG **120.700**
START **128.000**

MINERALNYYE VODY, RUSSIA
MINERALNYYE VODY
ILS Z CAT I/II, LOC Z RWY 12



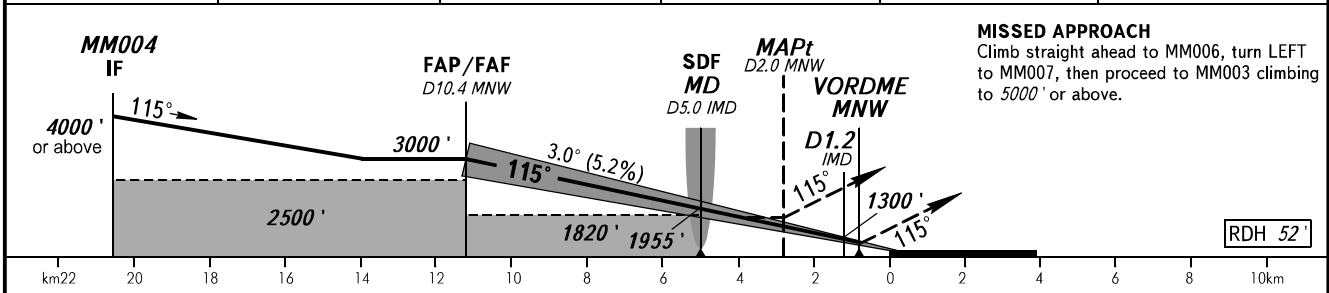
Feet (QNH)	Metres (QFE)
7400	(1940)
7000	(1820)
6500	(1670)
5000	(1210)
4000	(905)
3000	(600)
1955	(280)
1820	(240)
1720	(210)
1300	(80)
1225	(58)
1214	(54)
1206	(52)
1194	(48)
2330	(395)*
2180	(350)*
1890	(260)*

* - HGT is given relative to AD ELEV

Alt set: -QNH(QFE on req);
-hPa(mm on req).

BEARINGS AND TRACKS ARE MAG.
ELEV, ALT IN FEET
DISTANCES IN KILOMETRES

DME MNW	4.0	6.0	8.0	10.0	10.4
ALTITUDE	1914'	2258'	2602'	2946'	3000'



OCA(H)		A	B	C	D	
Straight-in Approach	CAT I	1194' (157')	1206' (169')	1214' (177')	1225' (188')	
	CAT II	(69')	(86')	(98')	(112')	
	LOC	With SDF	1720' (690')	1720' (690')	1720' (690')	1720' (690')
		WO SDF	1820' (790')	1820' (790')	1820' (790')	1820' (790')
Circling		1890' (840')	1890' (840')	2180' (1130')	2330' (1280')	

1 TRANSITION LEVEL:
- FLO80 when QNH is 1013 hPa (760mm mercury column) or above;
- FLO90 when QNH is 977 hPa (733mm mercury column) or above, but less than 1013 hPa (760mm mercury column);
- FL100 when QNH is less than 977 hPa (733mm mercury column).
Visual manoeuvring south of the AD is PROHIBITED.

GROUND SPEED	km/h	150	180	210	240	270	300	330	360	390
	m/s	2.2	2.6	3.0	3.5	3.9	4.3	4.8	5.2	5.6
RATE OF DESCENT	ft/min	427	512	597	682	768	853	938	1024	1109

CHANGE: New chart