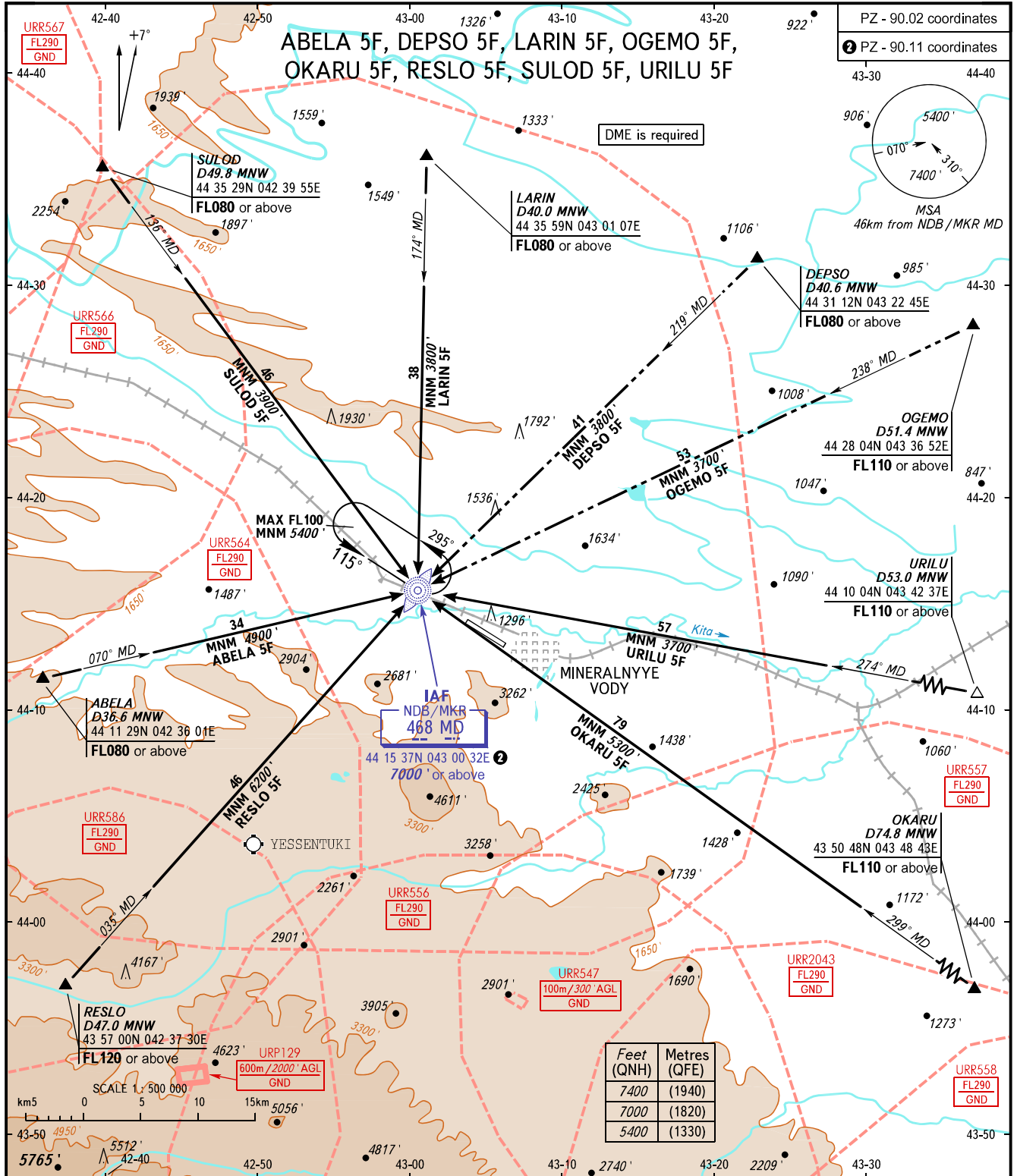


STANDARD ARRIVAL CHART
INSTRUMENT (STAR) - ICAO

MINERALNYYE VODY, RUSSIA
MINERALNYYE VODY
RWY 12/30

TRANSITION
LEVEL: 1



APPROACH 119.300
KRUG 120.700
START 128.000

NOTE:

- ABELA 5F is not AVBL, when URR545, URR564, URR566, URR586 are active.
- DEPSO 5F, LARIN 5F, OGEMO 5F are not AVBL, when URR545 is active.
- OKARU 5F is not AVBL, when URR545, URR556, URR557, URR2043, URR558, URR508 are active.
- RESLO 5F is not AVBL, when URR545, URR564, URR562, URR586, URR556 are active.
- SULOD 5F is not AVBL, when URR545, URR566, URR567 are active.
- URILU 5F is not AVBL, when URR545, URR557 are active.

1 TRANSITION LEVEL:

- FL080 when QNH is 1013 hPa (760mm mercury column) or above;
- FL090 when QNH is 977 hPa (733mm mercury column) or above, but less than 1013 hPa (760mm mercury column);
- FL100 when QNH is less than 977 hPa (733mm mercury column).

BEARINGS AND TRACKS ARE MAGNETIC
ALTITUDES AND ELEVATIONS IN FEET
DISTANCES IN KILOMETRES

Alt set: -QNH(QFE on req);
-hPa(mm on req).