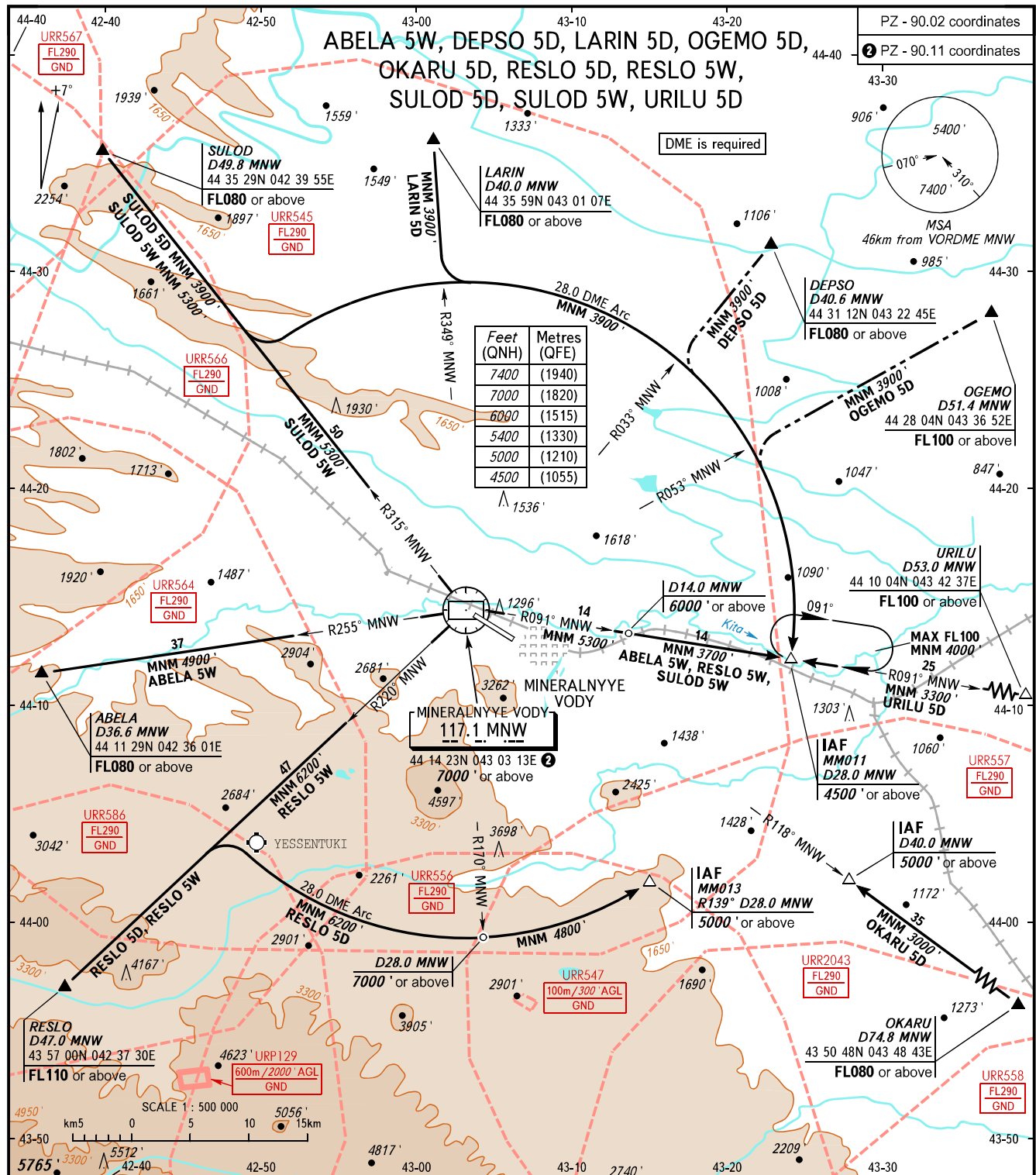


STANDARD ARRIVAL CHART
INSTRUMENT (STAR) - ICAO

MINERALNYYE VODY, RUSSIA
MINERALNYYE VODY
RWY 30

TRANSITION
LEVEL: 1



APPROACH	119.300
KRUG	120.700
START	128.000

NOTE:
 ABELA 5W is not AVBL, when URR545, URR564, URR566, URR586, URR557 are active.
 DEP SO 5D, LARIN 5D, OGEMO 5D are not AVBL, when URR545 is active.
 OKARU 5D is not AVBL, when URR557, URR2043, URR558, URR508 are active.
 RESLO 5D is not AVBL, when URR545, URR564, URR562, URR586, URR556, URR557, URR2043 are active.
 RESLO 5W is not AVBL, when URR545, URR564, URR562, URR586, URR556, URR557 are active.
 SULOD 5D is not AVBL, when URR545, URR564, URR566, URR567 are active.
 SULOD 5W is not AVBL, when URR545, URR564, URR566, URR567, URR557 are active.
 URILU 5D is not AVBL, when URR545, URR557 are active.

- 1** TRANSITION LEVEL:
- FL080 when QNH is 1013 hPa (760mm mercury column) or above;
 - FL090 when QNH is 977 hPa (733mm mercury column) or above, but less than 1013 hPa (760mm mercury column);
 - FL100 when QNH is less than 977 hPa (733mm mercury column).

BEARINGS AND TRACKS ARE MAGNETIC
 ALTITUDES AND ELEVATIONS IN FEET
 DISTANCES IN KILOMETRES

Alt set: -QNH(QFE on req);
 -hPa(mm on req).

CHANGE: New chart