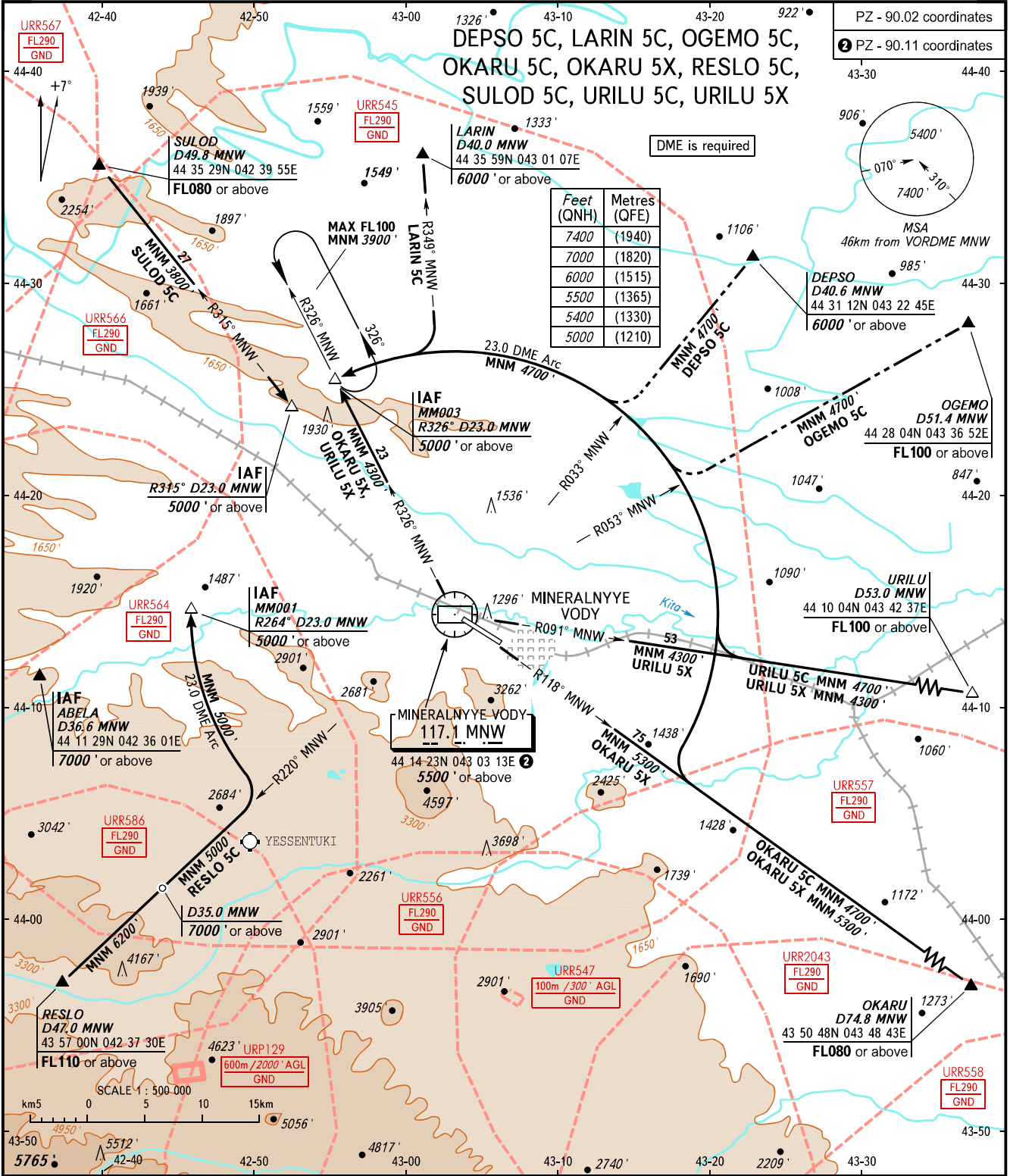


STANDARD ARRIVAL CHART
INSTRUMENT (STAR) - ICAO

TRANSITION
LEVEL: **1**

MINERALNYYE VODY, RUSSIA
MINERALNYYE VODY
RWY 12



APPROACH	119.300
KRUG	120.700
START	128.000

NOTE:
 DEPSO 5C, LARIN 5C, OGEMO 5C are not AVBL, when URR545 is active.
 OKARU 5C, OKARU 5X are not AVBL, when URR545, URR556, URR557, URR2043, URR558, URR508 are active.
 RESLO 5C is not AVBL, when URR545, URR564, URR586, URR556 are active.
 SULOD 5C is not AVBL, when URR545, URR566, URR567 are active.
 URILU 5C is not AVBL, when URR545, URR557 are active.
 URILU 5X is not AVBL, when URR545, URR564, URR566, URR557 are active.

BEARINGS AND TRACKS ARE MAGNETIC
 ALTITUDES AND ELEVATIONS IN FEET
 DISTANCES IN KILOMETRES

Alt set: -QNH(QFE on req);
 -hPa(mm on req).

1 TRANSITION LEVEL:
 - FL080 when QNH is 1013 hPa (760mm mercury column) or above;
 - FL090 when QNH is 977 hPa (733mm mercury column) or above,
 but less than 1013 hPa (760mm mercury column);
 - FL100 when QNH is less than 977 hPa (733mm mercury column).

CHANGE: New chart