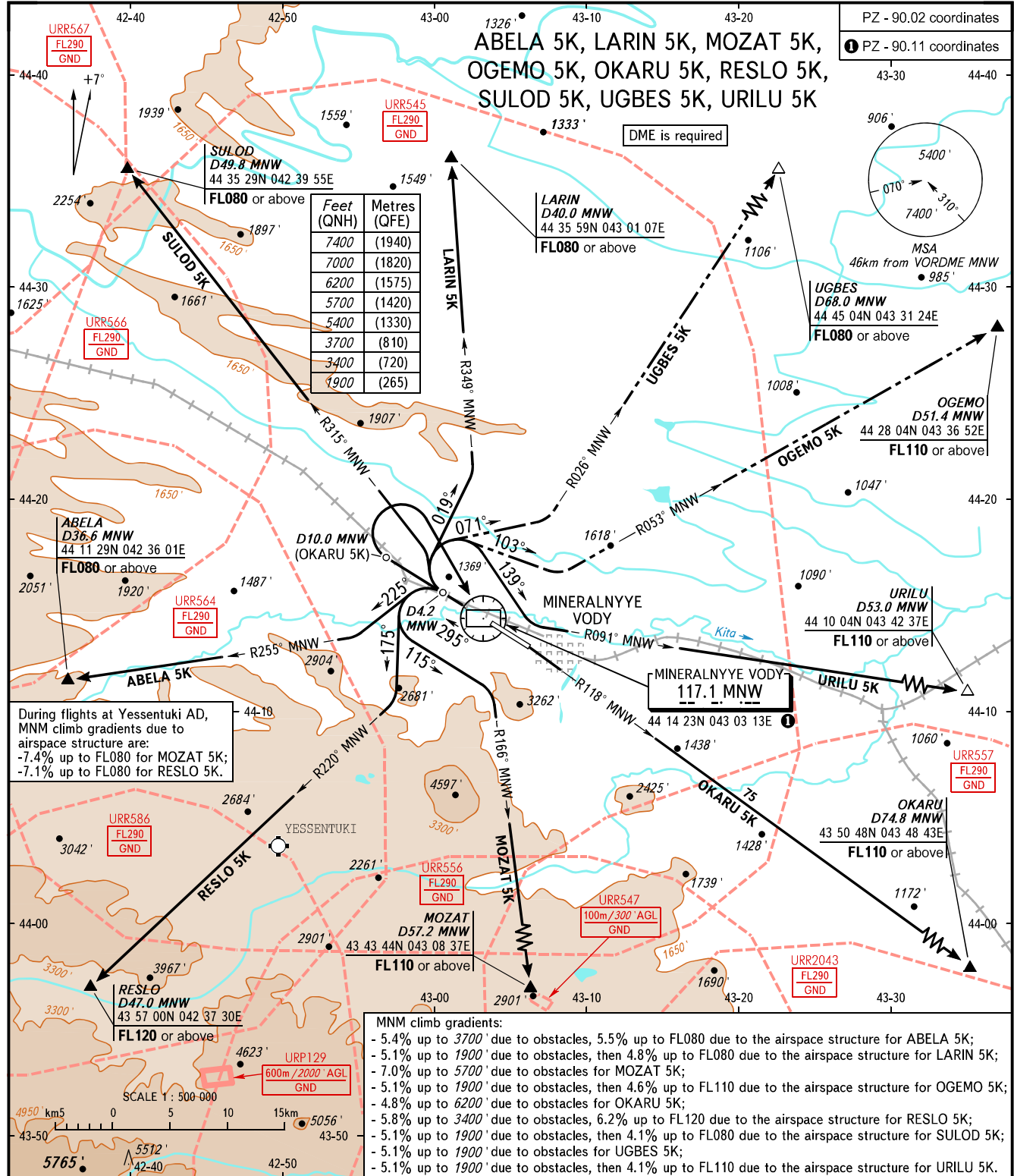


STANDARD DEPARTURE CHART
INSTRUMENT (SID) - ICAO

MINERALNYYE VODY, RUSSIA
MINERALNYYE VODY
RWY 30

TRANSITION
ALTITUDE: 7000'



During flights at Yessentuki AD, MNM climb gradients due to airspace structure are:
-7.4% up to FL080 for MOZAT 5K;
-7.1% up to FL080 for RESLO 5K.

- MNM climb gradients:
- 5.4% up to 3700' due to obstacles, 5.5% up to FL080 due to the airspace structure for ABELA 5K;
 - 5.1% up to 1900' due to obstacles, then 4.8% up to FL080 due to the airspace structure for LARIN 5K;
 - 7.0% up to 5700' due to obstacles for MOZAT 5K;
 - 5.1% up to 1900' due to obstacles, then 4.6% up to FL110 due to the airspace structure for OGEMO 5K;
 - 4.8% up to 6200' due to obstacles for OKARU 5K;
 - 5.8% up to 3400' due to obstacles, 6.2% up to FL120 due to the airspace structure for RESLO 5K;
 - 5.1% up to 1900' due to obstacles, then 4.1% up to FL080 due to the airspace structure for SULOD 5K;
 - 5.1% up to 1900' due to obstacles for UGBES 5K;
 - 5.1% up to 1900' due to obstacles, then 4.1% up to FL110 due to the airspace structure for URILU 5K.

START	128.000
KRUG	120.700
APPROACH	119.300

NOTE:
 ABELA 5K is not AVBL, when URR545, URR564, URR566 are active.
 LARIN 5K, OGEMO 5K, UGBES 5K are not AVBL, when URR545 is active.
 MOZAT 5K is not AVBL, when URR545, URR564, URR566, URR557, URR2043 are active.
 OKARU 5K is not AVBL, when URR545, URR564, URR556, URR557, URR2043, URR558, URR508 are active.
 RESLO 5K is not AVBL, when URR545, URR564, URR586, are active.
 SULOD 5K is not AVBL, when URR545, URR566, URR567 are active.
 URILU 5K is not AVBL, when URR545, URR557 are active.

BEARINGS AND TRACKS ARE MAGNETIC
 ALTITUDES AND ELEVATIONS IN FEET
 DISTANCES IN KILOMETRES

Alt set: -QNH(QFE on req);
 -hPa(mm on req).