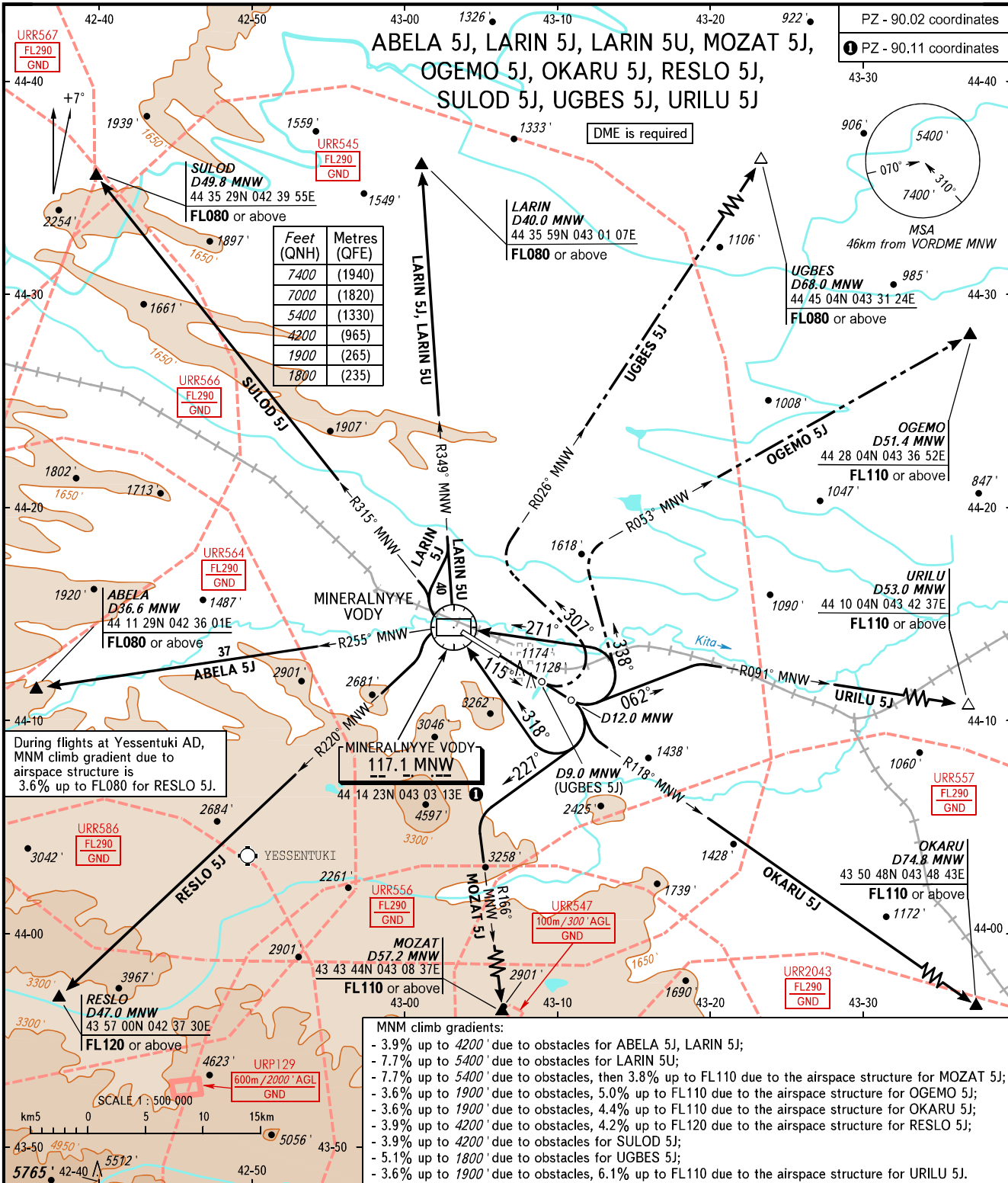


STANDARD DEPARTURE CHART  
INSTRUMENT (SID) - ICAO

TRANSITION  
ALTITUDE: 7000'

MINERALNYE VODY, RUSSIA  
MINERALNYE VODY  
RWY 12



START **128.000**  
 KRUG **120.700**  
 APPROACH **119.300**

**NOTE:**  
 ABELA 5J is not AVBL, when URR545, URR564, URR566, URR586 are active.  
 LARIN 5J is not AVBL, when URR545, URR564, URR566 are active.  
 LARIN 5U is not AVBL, when URR545, URR564, URR556, URR557 are active.  
 MOZAT 5J is not AVBL, when URR545, URR556, URR557, URR2043 are active.  
 OGEMO 5J, UGBES 5J are not AVBL, when URR545 is active.  
 OKARU 5J is not AVBL, when URR545, URR557, URR2043, URR558, URR508 are active.  
 RESLO 5J is not AVBL, when URR545, URR564, URR586, are active.  
 SULOD 5J is not AVBL, when URR545, URR564, URR566, URR567 are active.  
 URILU 5J is not AVBL, when URR545, URR557 are active.

BEARINGS AND TRACKS ARE MAGNETIC  
 ALTITUDES AND ELEVATIONS IN FEET  
 DISTANCES IN KILOMETRES

Alt set: -QNH(QFE on req);  
 -hPa(mm on req).

CHANGE: NOTE