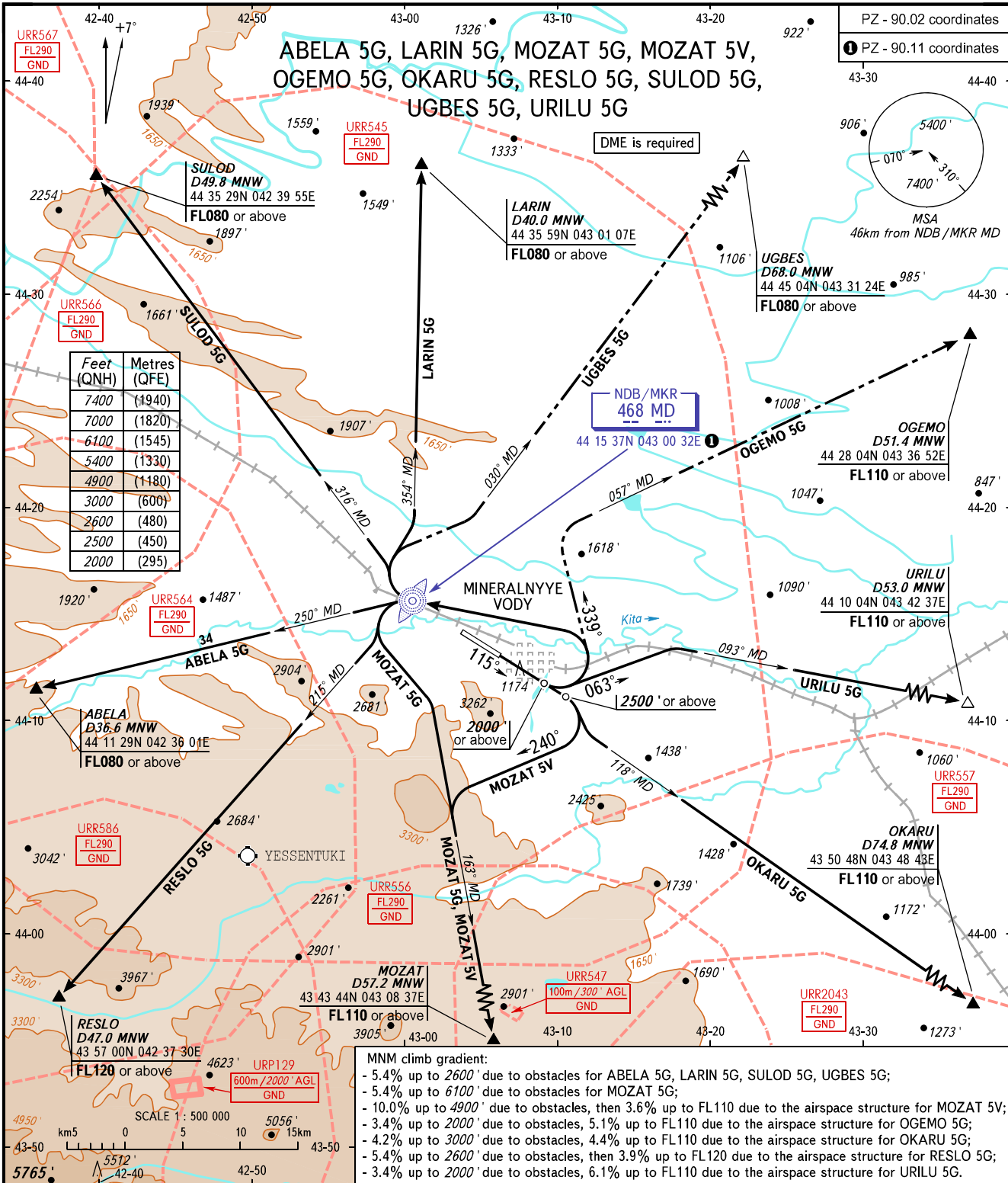


STANDARD DEPARTURE CHART
INSTRUMENT (SID) - ICAO

TRANSITION
ALTITUDE: 7000'

MINERALNYYE VODY, RUSSIA
MINERALNYYE VODY
RWY 12



MNM climb gradient:

- 5.4% up to 2600' due to obstacles for ABELA 5G, LARIN 5G, SULOD 5G, UGBES 5G;
- 5.4% up to 6100' due to obstacles for MOZAT 5G;
- 10.0% up to 4900' due to obstacles, then 3.6% up to FL110 due to the airspace structure for MOZAT 5V;
- 3.4% up to 2000' due to obstacles, 5.1% up to FL110 due to the airspace structure for OGEMO 5G;
- 4.2% up to 3000' due to obstacles, 4.4% up to FL110 due to the airspace structure for OKARU 5G;
- 5.4% up to 2600' due to obstacles, then 3.9% up to FL120 due to the airspace structure for RESLO 5G;
- 3.4% up to 2000' due to obstacles, 6.1% up to FL110 due to the airspace structure for URILU 5G.

NOTE:

1. Turn before DER is PROHIBITED.
2. ABELA 5G, LARIN 5G, UGBES 5G are not AVBL, when URR545, URR564, URR566 are active.
MOZAT 5G is not AVBL, when URR545, URR564, URR586, URR556, URR557, URR2043 are active.
MOZAT 5V is not AVBL, when URR545, URR564, URR556, URR557, URR2043 are active.
OGEMO 5G is not AVBL, when URR545 is active.
OKARU 5G is not AVBL, when URR545, URR557, URR2043, URR558, URR508 are active.
RESLO 5G is not AVBL, when URR545, URR564, URR567, URR586 are active.
SULOD 5G is not AVBL, when URR545, URR564, URR566, URR567 are active.
URILU 5G is not AVBL, when URR545, URR557 are active.

START 128.000
KRUG 120.700
APPROACH 119.300

BEARINGS AND TRACKS ARE MAGNETIC
ALTITUDES AND ELEVATIONS IN FEET
DISTANCES IN KILOMETRES

Alt set: -QNH(QFE on req);
-hPa(mm on req).

CHANGE: New chart