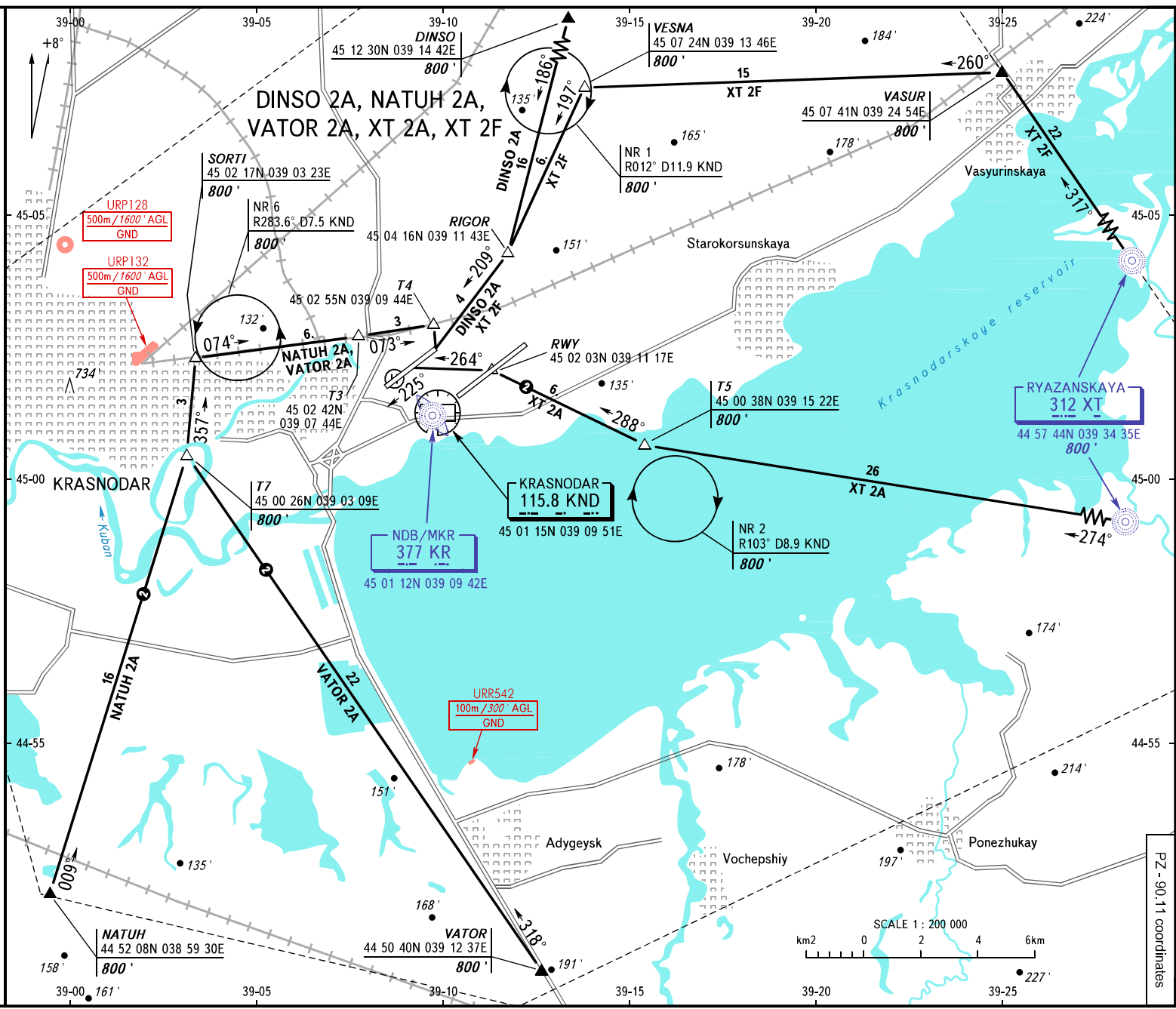


VFR
ARRIVAL
CHART

TRANSITION
ALTITUDE: 4000'

KRASNODAR, RUSSIA
PASHKOVSKIY
RWY 23R

PZ - 90.11 coordinates



APPROACH Sector WEST 127.700
Sector EAST 129.600
RADAR 121.300
TOWER 118.200

BEARINGS AND TRACKS ARE MAGNETIC
ALTITUDES AND ELEVATIONS IN FEET
DISTANCES IN KILOWMETRES

Alt set: -QNH(QFE on req.);
-hPa(mm on req.).

1 TRANSITION LEVEL:
- FLO60 when QNH is 977 hPa (733mm mercury column) or above;
- FLO70 when QNH is 941 hPa (706mm mercury column) or above,
but less than 977 hPa (733mm mercury column).
2 Cross RWY 23L take-off heading and centre by clearance
of "Krasnodar-Radar" controller on 121.300 MHz.
NOTE: Helipad is AVBL only in the day-time.

CHANGE: New chart