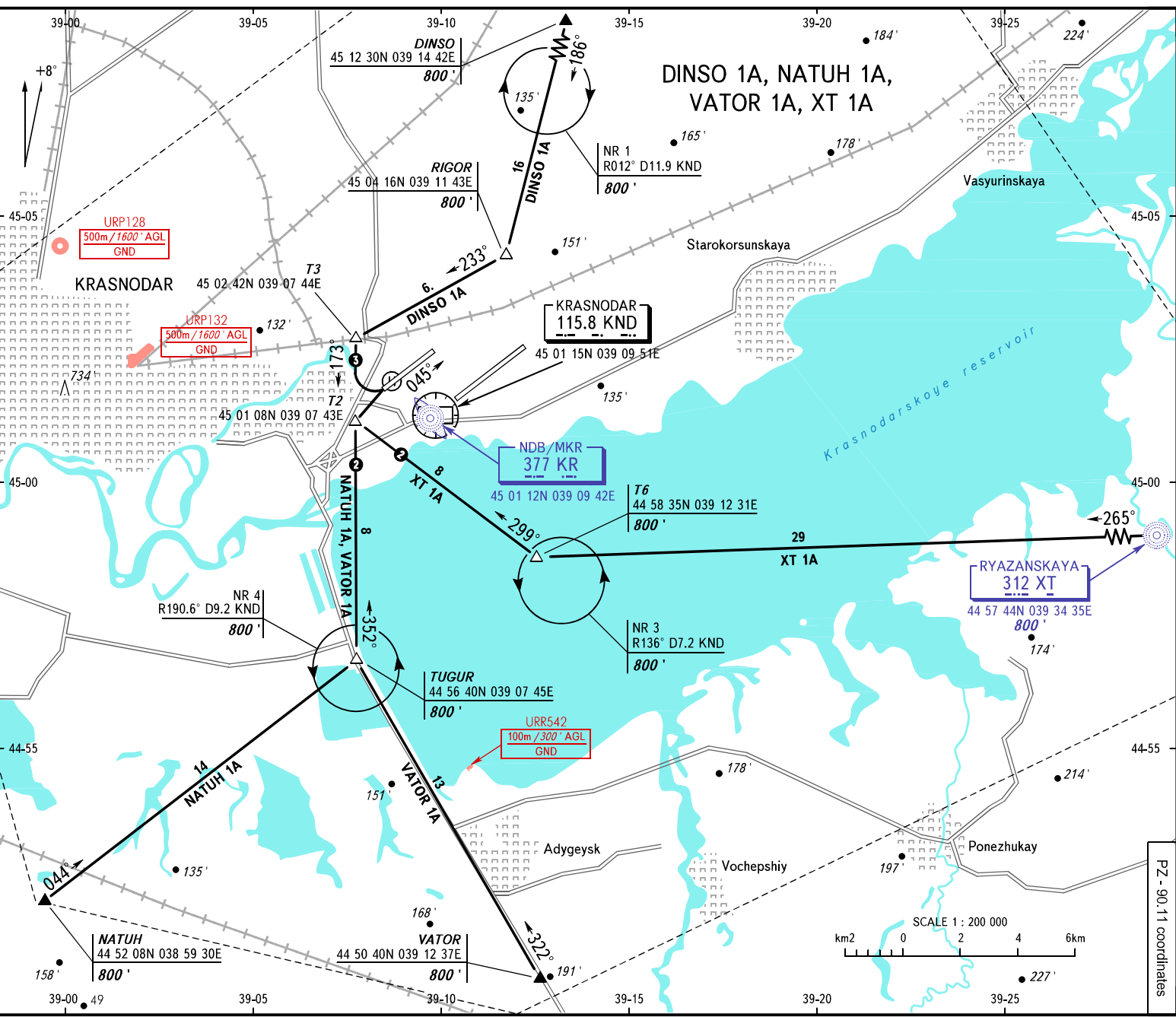


TRANSITION LEVEL: 1

PZ - 90.11 coordinates



APPROACH Sector WEST **127.700**
 Sector EAST **129.600**
RADAR **121.300**
TOWER **118.200**

BEARINGS AND TRACKS ARE MAGNETIC
ALTITUDES AND ELEVATIONS IN FEET
DISTANCES IN KILOMETRES

1 TRANSITION LEVEL:
 - FLO60 when QNH is 977 hPa (733mm mercury column) or above;
 - FLO70 when QNH is 941 hPa (706mm mercury column) or above,
 but less than 977 hPa (733mm mercury column);
2 Cross RMY 05R landing heading by clearance
 of "Krasnodar-Radar" controller on 121.300 MHz.
3 Deviation west of M4 DON highway is prohibited
 on segment T2-T3.

NOTE:Helipad is AVBL only in the day-time.

Federal Air Transport Agency

AIRC AMDT 13/20