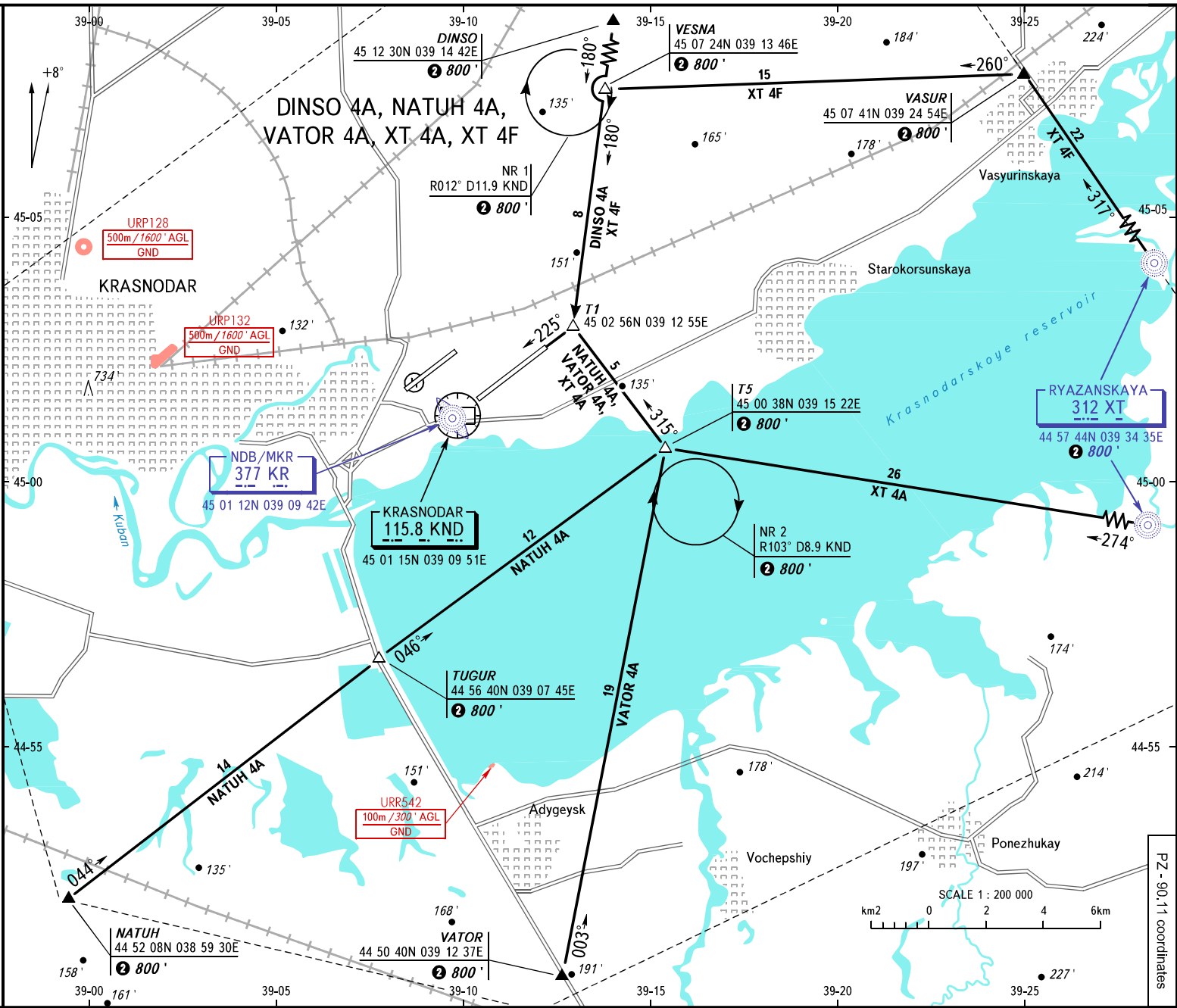


VFR
ARRIVAL
CHART

TRANSITION
LEVEL: **1**

KRASNODAR, RUSSIA
PASHKOVSKIY
RWY 23L

PZ - 90.11 coordinates



1 TRANSITION LEVEL:
- F1060 when QNH is 977 hPa (733mm mercury column) or above;
- F1070 when QNH is 941 hPa (706mm mercury column) or above,
but less than 977 hPa (733mm mercury column).
2 1000' at NGT

APPROACH Sector WEST 127.700
Sector EAST 129.600
RADAR 121.300
TOWER 118.200

BEARINGS AND TRACKS ARE MAGNETIC
ALTITUDES AND ELEVATIONS IN FEET
DISTANCES IN KILOMETRES

Alt set: -QNH(QFE on req.);
-hPa(mm on req.).