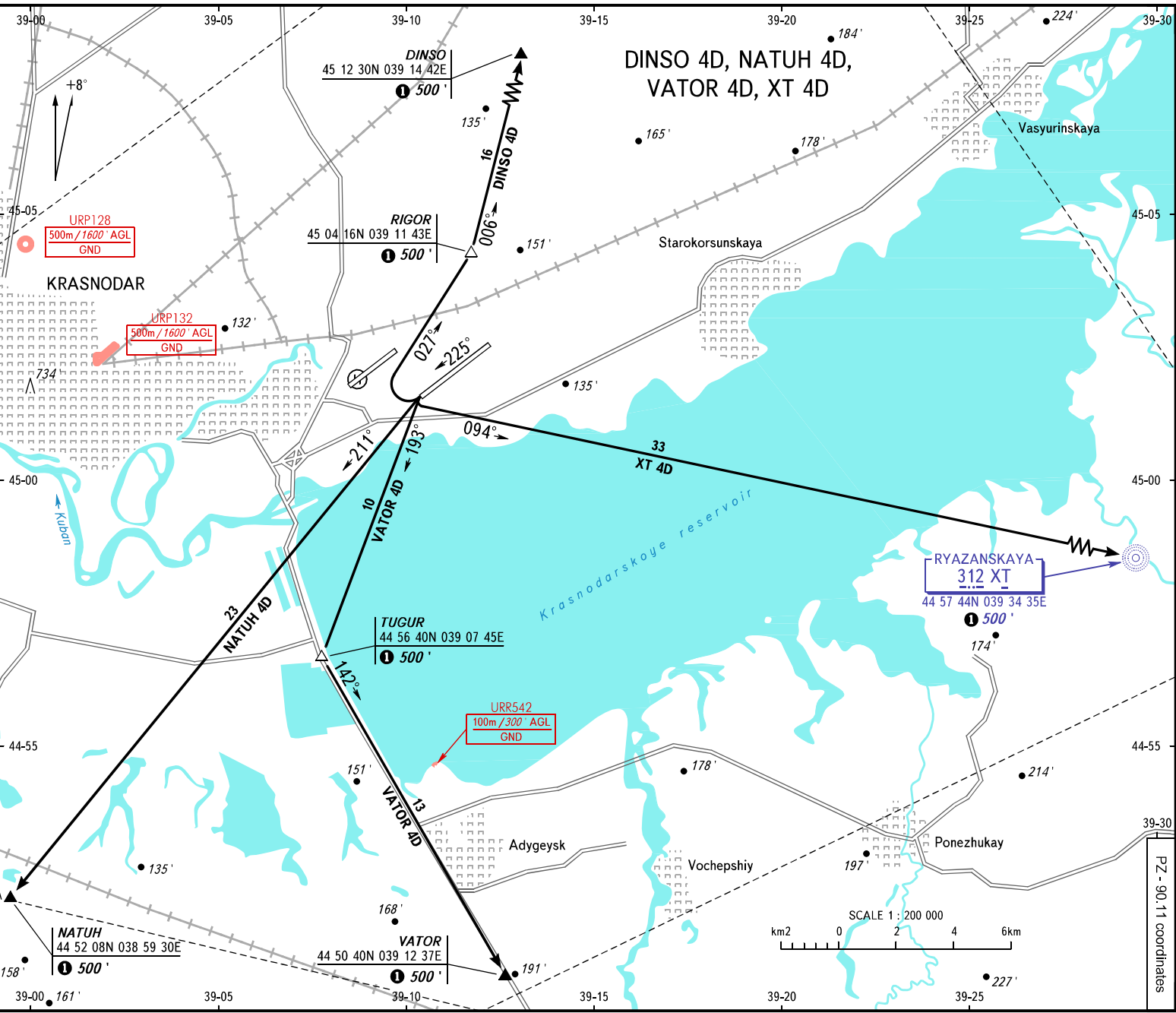


VFR
DEPARTURE
CHART

TRANSITION
ALTITUDE: 4000'

KRASNODAR, RUSSIA
PASHKOVSKIY
RWY 23L

PZ - 90.11 coordinates



APPROACH Sector WEST 127.700
Sector EAST 129.600
TOWER 118.200
RADAR 121.300

BEARINGS AND TRACKS ARE MAGNETIC
ALTITUDES AND ELEVATIONS IN FEET
DISTANCES IN KILOMETRES

Alt set: -QN(H)(QFE on req):
-hPa(mm on req).