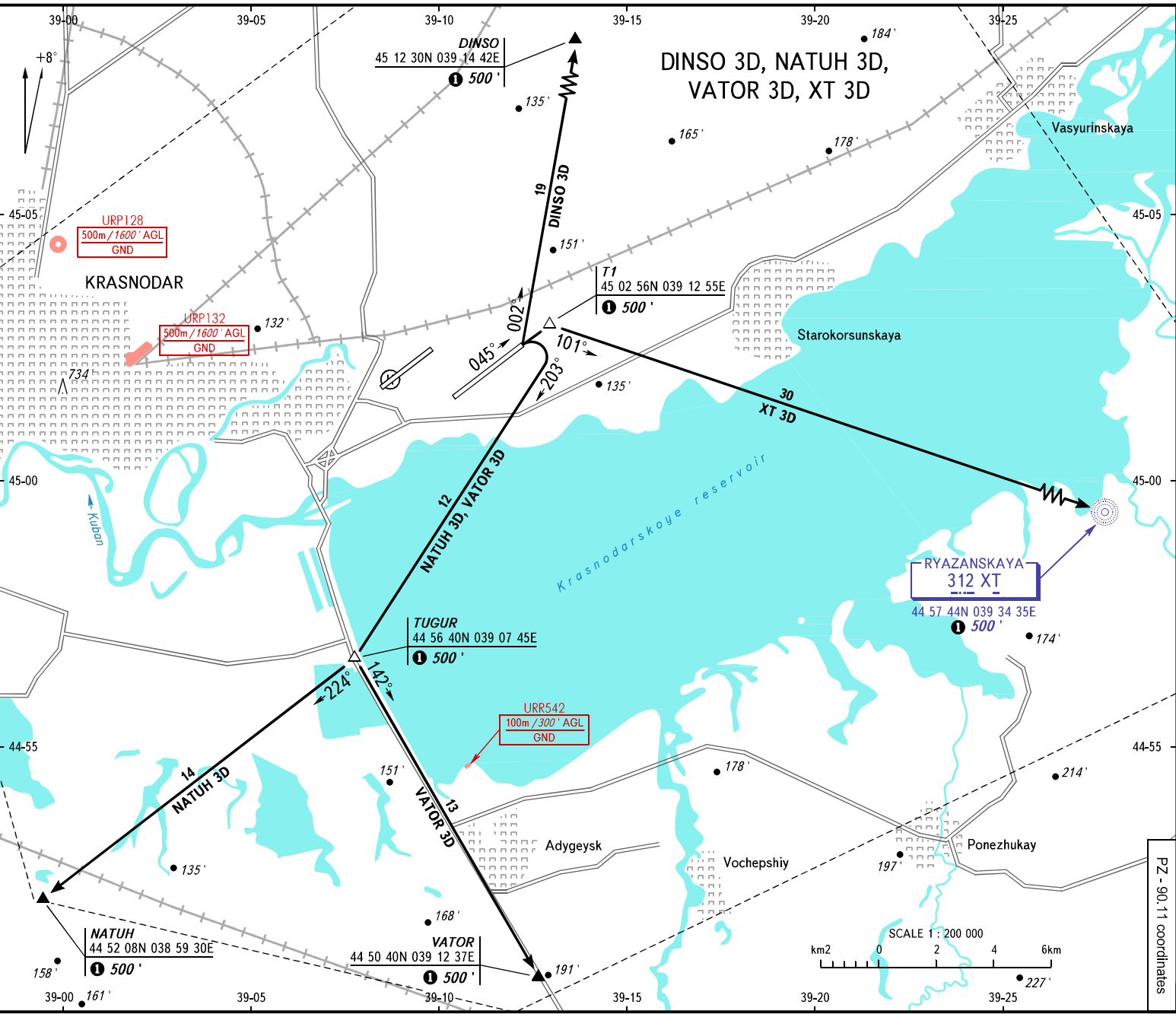


VFR DEPARTURE CHART

TRANSITION ALTITUDE: 4000'

KRASNODAR, RUSSIA  
PASHKOVSKIY RWY 05R

PZ - 90.11 coordinates



APPROACH Sector WEST **127,700**  
Sector EAST **129,600**  
TOWER **118,200**  
RADAR **121,300**

BEARINGS AND TRACKS ARE MAGNETIC  
ALTITUDES AND ELEVATIONS IN FEET  
DISTANCES IN KILOMETRES

Alt set: -QNH(QFE on req);  
-hPa(m on req).