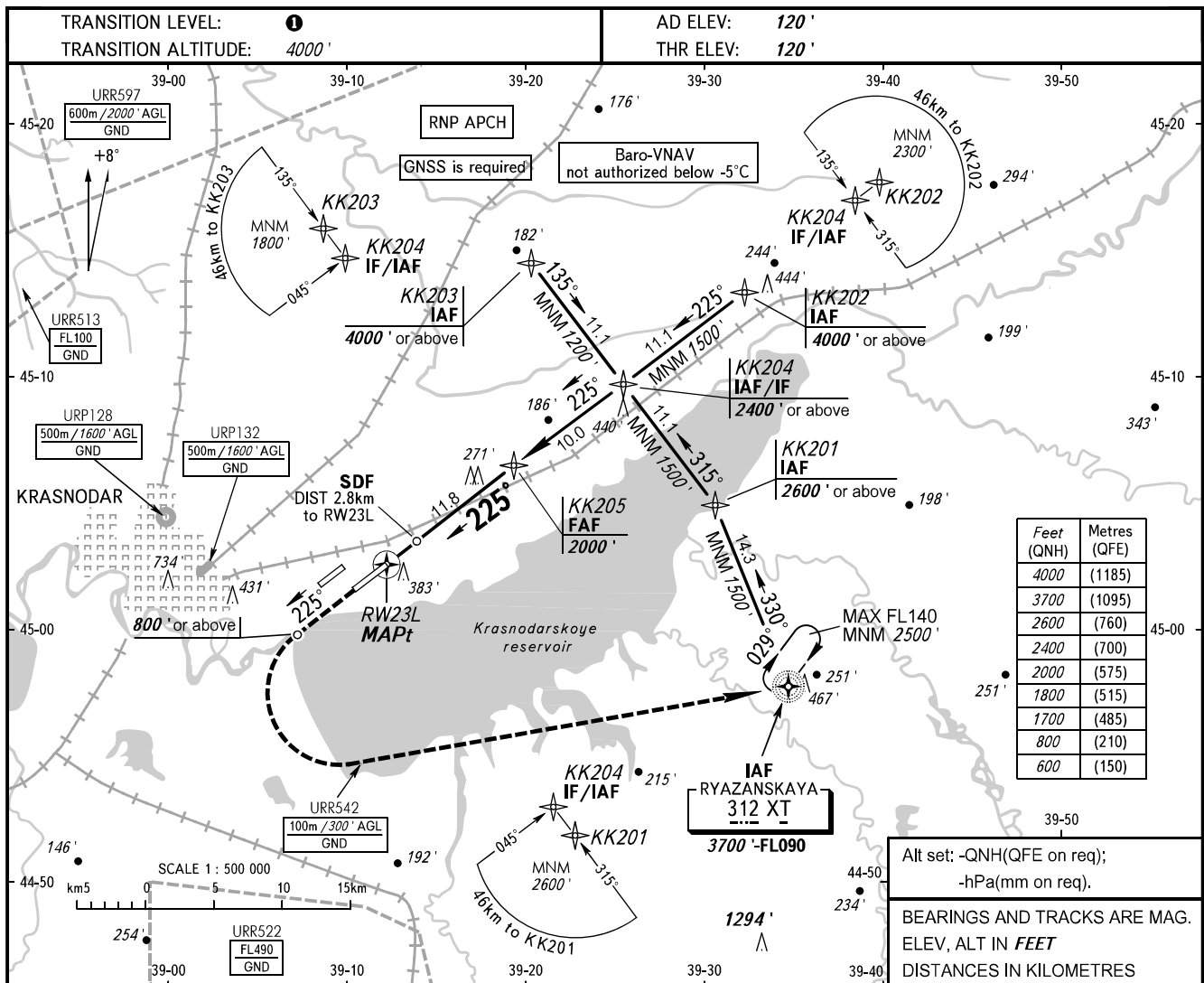


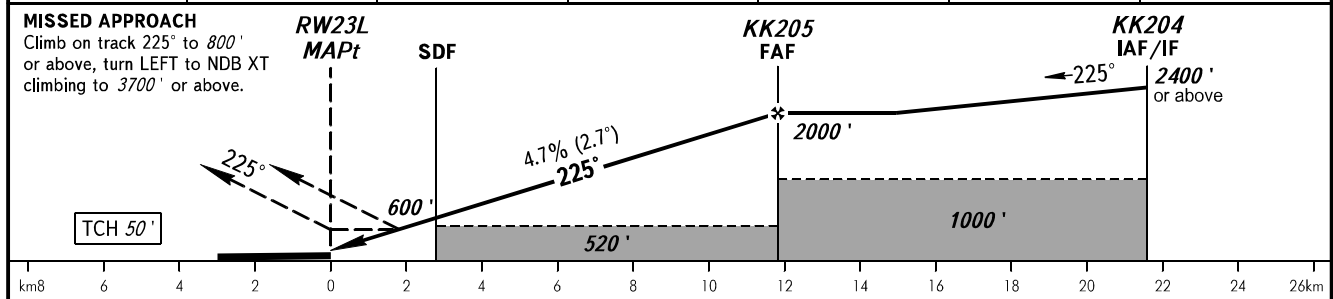
**INSTRUMENT
APPROACH
CHART - ICAO**

RADAR	121.300
TOWER	118.200

KRASNODAR, RUSSIA
PASHKOVSKIY
RNP RWY 23L



DIST to RW23L	2.0	4.0	6.0	8.0	10.0	11.8
ALTITUDE	480'	790'	1090'	1400'	1710'	2000'



OCA(H)		A	B	C	D
Straight-in	LNAV/VNAV	430' (320')	440' (330')	460' (350')	480' (370')
	LNAV	480' (360')	480' (360')	480' (360')	480' (360')
Approach					
Circling		680' (560')	680' (560')	780' (660')	830' (710')

1 TRANSITION LEVEL:
- FL060 when QNH is 977 hPa (733mm mercury column) or above;
- FL070 when QNH is 941 hPa (706mm mercury column) or above,
but less than 977 hPa (733mm mercury column).

NOTE:
1. MAPt at RW23L. Timing not authorized for defining MAPt.
2. Wind shear is expected.

GROUND SPEED	km/h	150	180	210	240	270	300	330	360	390
RATE OF DESCENT	m/s	2.0	2.4	2.7	3.1	3.5	3.9	4.3	4.7	5.1
	ft/min	385	463	540	617	694	771	848	925	1002