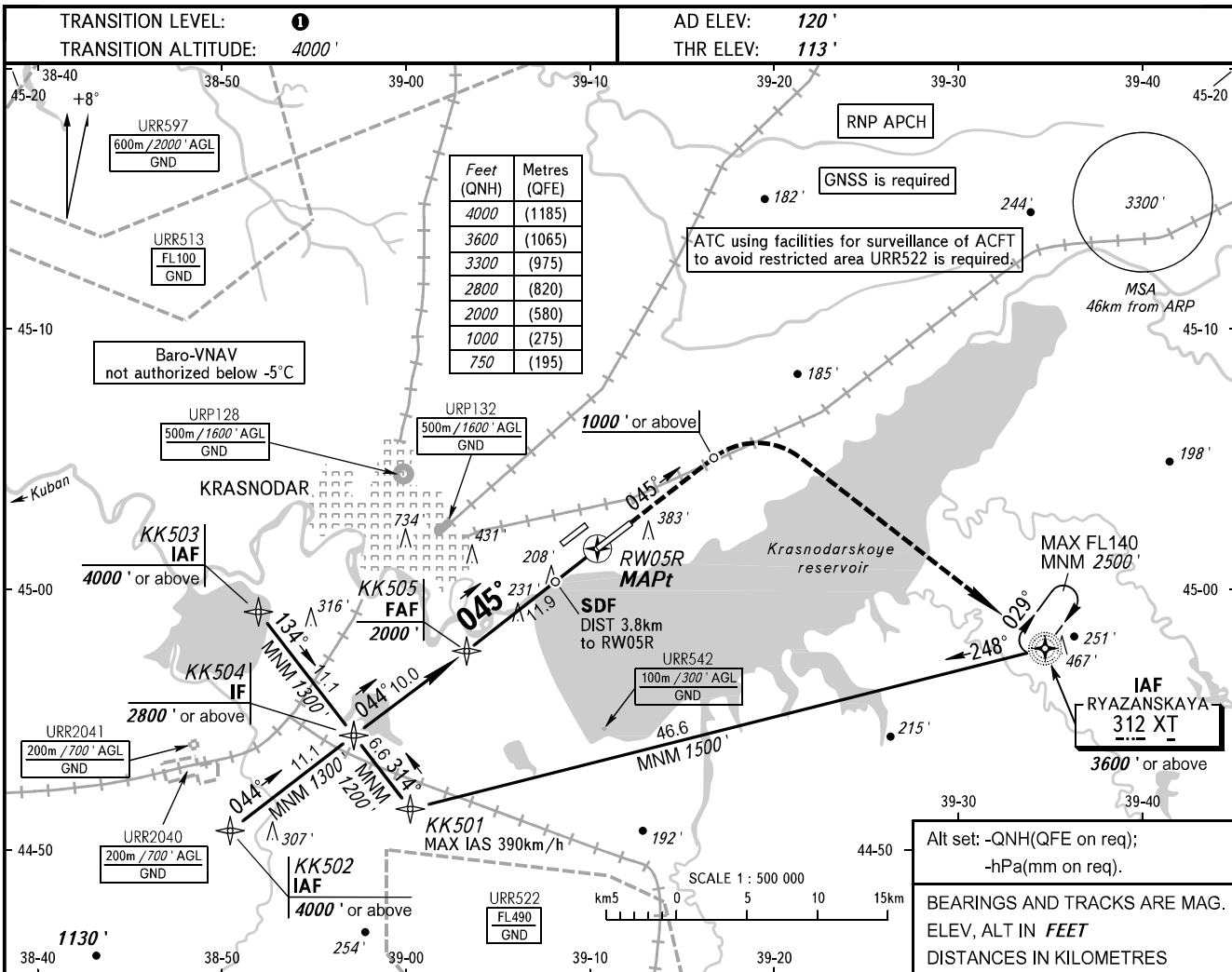


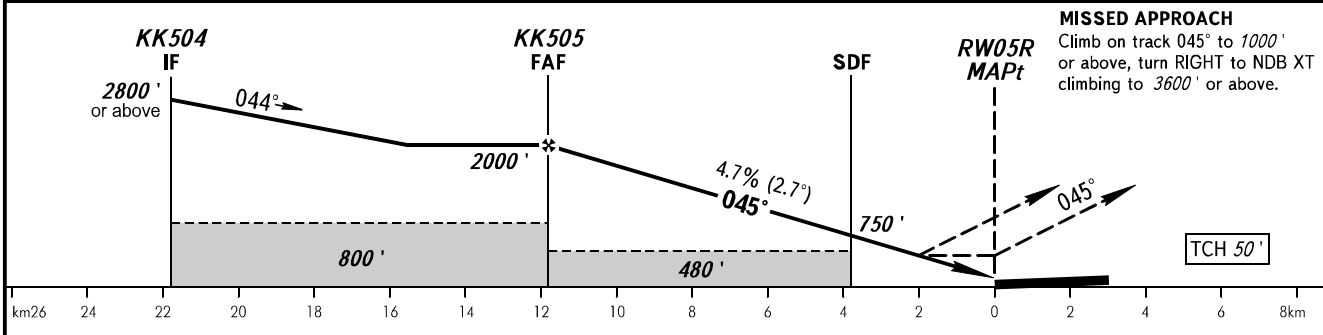
**INSTRUMENT  
APPROACH  
CHART - ICAO**

RADAR	121.300
TOWER	118.200

**KRASNODAR, RUSSIA  
PASHKOVSKIY  
RNP RWY 05R**



DIST to RW05R	11.8	10.0	8.0	6.0	4.0	2.0
ALTITUDE	2000'	1700'	1400'	1090'	780'	470'



OCA(H)		A	B	C	D
Straight-in	LNAV/VNAV	410' (300')	420' (310')	430' (320')	450' (340')
	LNAV	460' (350')	460' (350')	470' (350')	470' (350')
Approach					
Circling		680' (560')	680' (560')	780' (660')	830' (710')

**TRANSITION LEVEL:**  
- FL060 when QNH is 977 hPa (733mm mercury column) or above;  
- FL070 when QNH is 941 hPa (706mm mercury column) or above,  
but less than 977 hPa (733mm mercury column).

**NOTE:**  
1. MAPt at RW05R. Timing not authorized for defining MAPt.  
2. Wind shear is expected.

GROUND SPEED	km/h	150	180	210	240	270	300	330	360	390
RATE OF DESCENT	m/s	2.0	2.4	2.7	3.1	3.5	3.9	4.3	4.7	5.1
	ft/min	385	463	540	617	694	771	848	925	1002

CHANGE: New chart