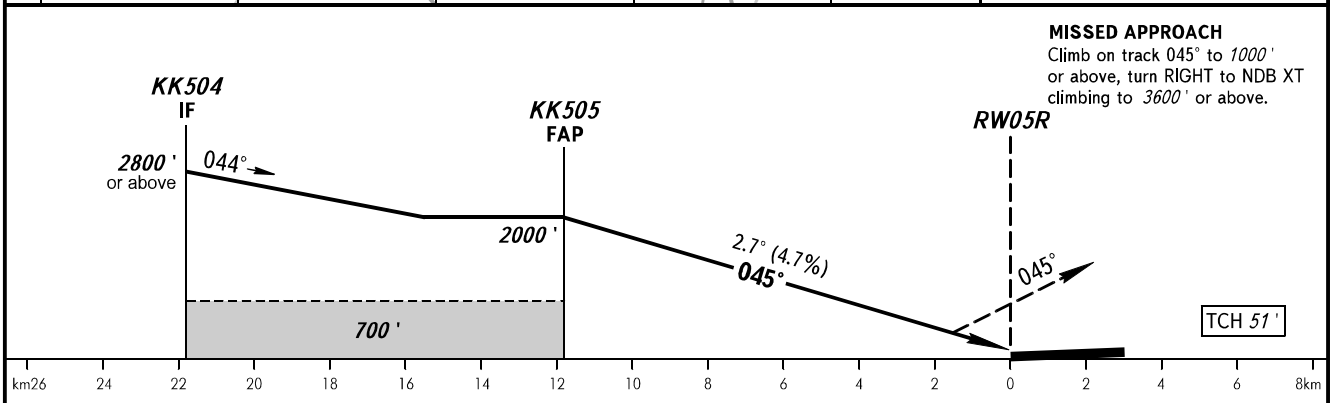
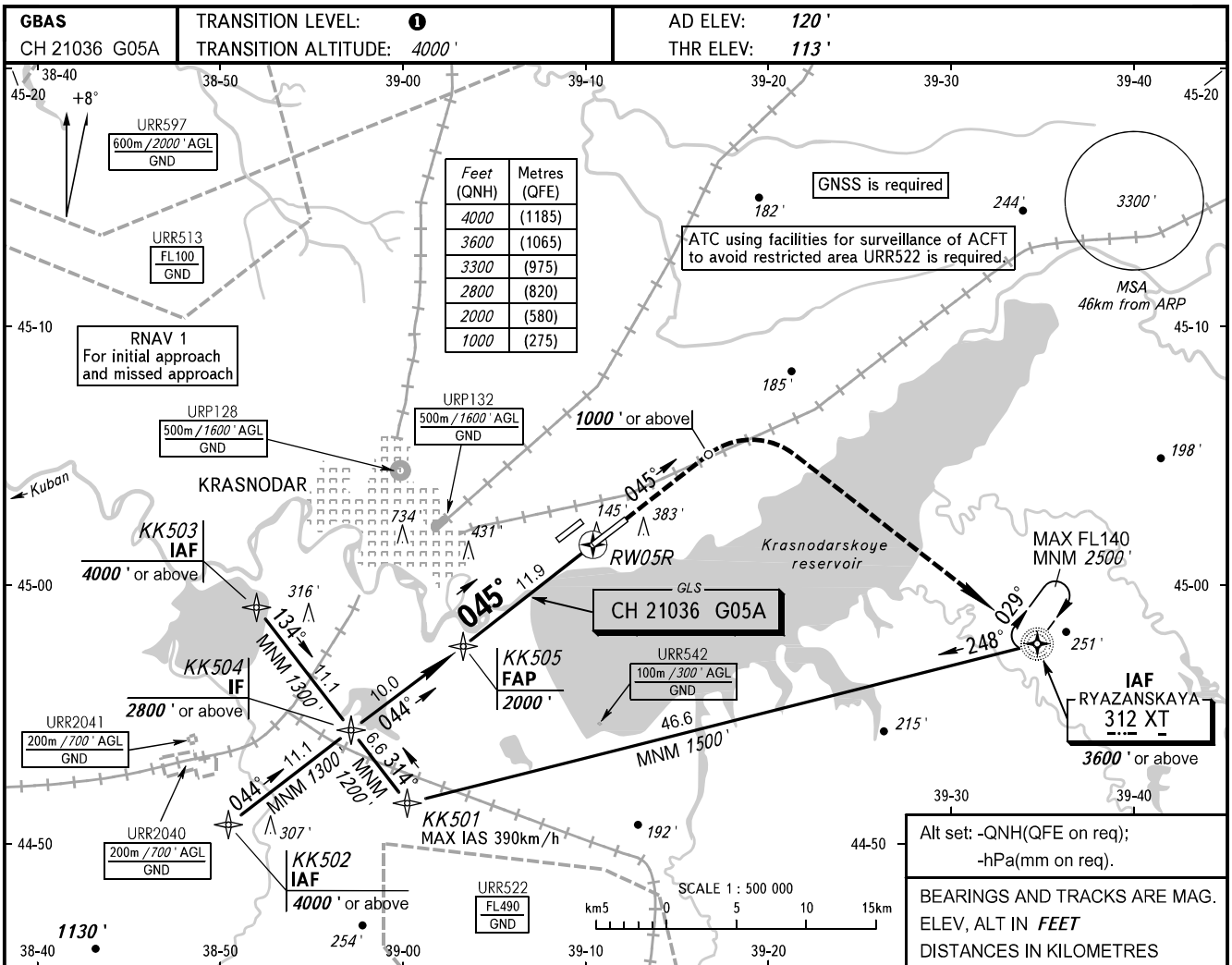


**INSTRUMENT  
APPROACH  
CHART - ICAO**

**KRASNODAR, RUSSIA  
PASHKOVSKIY  
GLS RWY 05R**

RADAR	121.300
TOWER	118.200



OCA(H)		A	B	C	D						
Straight-in	CAT I	277' (164')	287' (174')	296' (184')	306' (194')						
	Approach										
Circling		680' (560')	680' (560')	780' (660')	830' (710')						
GROUND SPEED		km/h	150	180	210	240	270	300	330	360	390
RATE OF DESCENT		m/s	2.0	2.4	2.7	3.1	3.5	3.9	4.3	4.7	5.1
		ft/min	385	463	540	617	694	771	848	925	1002

**1** TRANSITION LEVEL:  
- FL060 when QNH is 977 hPa (733mm mercury column) or above;  
- FL070 when QNH is 941 hPa (706mm mercury column) or above,  
but less than 977 hPa (733mm mercury column).

**NOTE**  
Wind shear is expected.

CHANGE: New chart