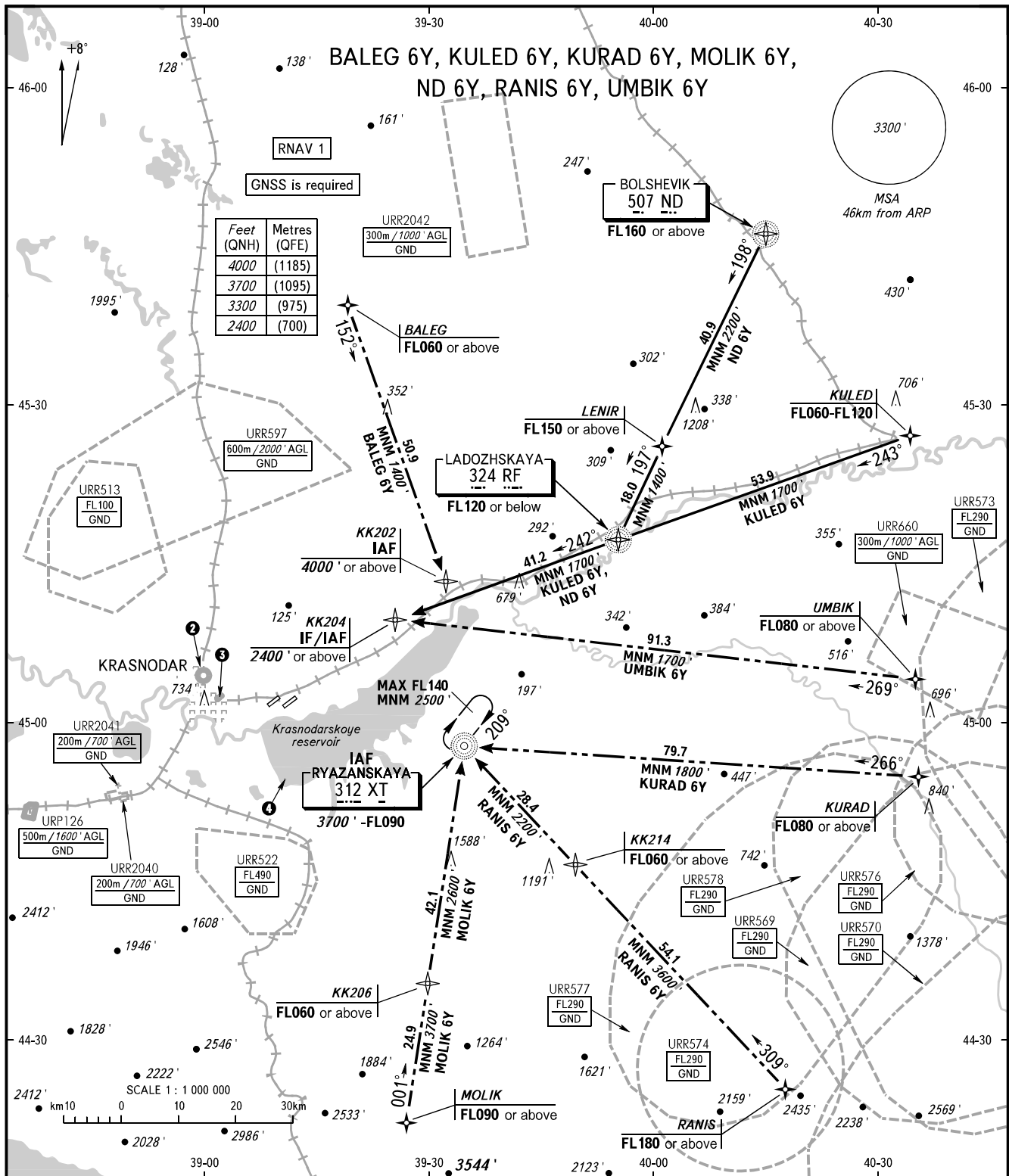


STANDARD ARRIVAL CHART
INSTRUMENT (STAR) - ICAO

TRANSITION
LEVEL: ①

KRASNODAR, RUSSIA
PASHKOVSKIY
RWY 23L



APPROACH	Sector WEST	127.700	② URR128 500m / 1600' AGL GND	③ URR132 500m / 1600' AGL GND
	Sector EAST	129.600		
TOWER		118.200		
RADAR		121.300		

① TRANSITION LEVEL:
- FL060 when QNH is 977 hPa (733mm mercury column) or above;
- FL070 when QNH is 941 hPa (706mm mercury column) or above,
but less than 977 hPa (733mm mercury column).

NOTE:

1. When URR577, URR578, URR576, URR573, URR569 are active, STAR KURAD 6Y is not AVBL.
2. When URR574, URR577, URR569 are active, STAR RANIS 6Y is not AVBL.
3. When URR573 is active, STAR UMBIK 6Y is not AVBL.

BEARINGS AND TRACKS ARE MAGNETIC
ALTITUDES AND ELEVATIONS IN FEET
DISTANCES IN KILOMETRES

Alt set: -QNH(QFE on req);
-hPa(mm on req).