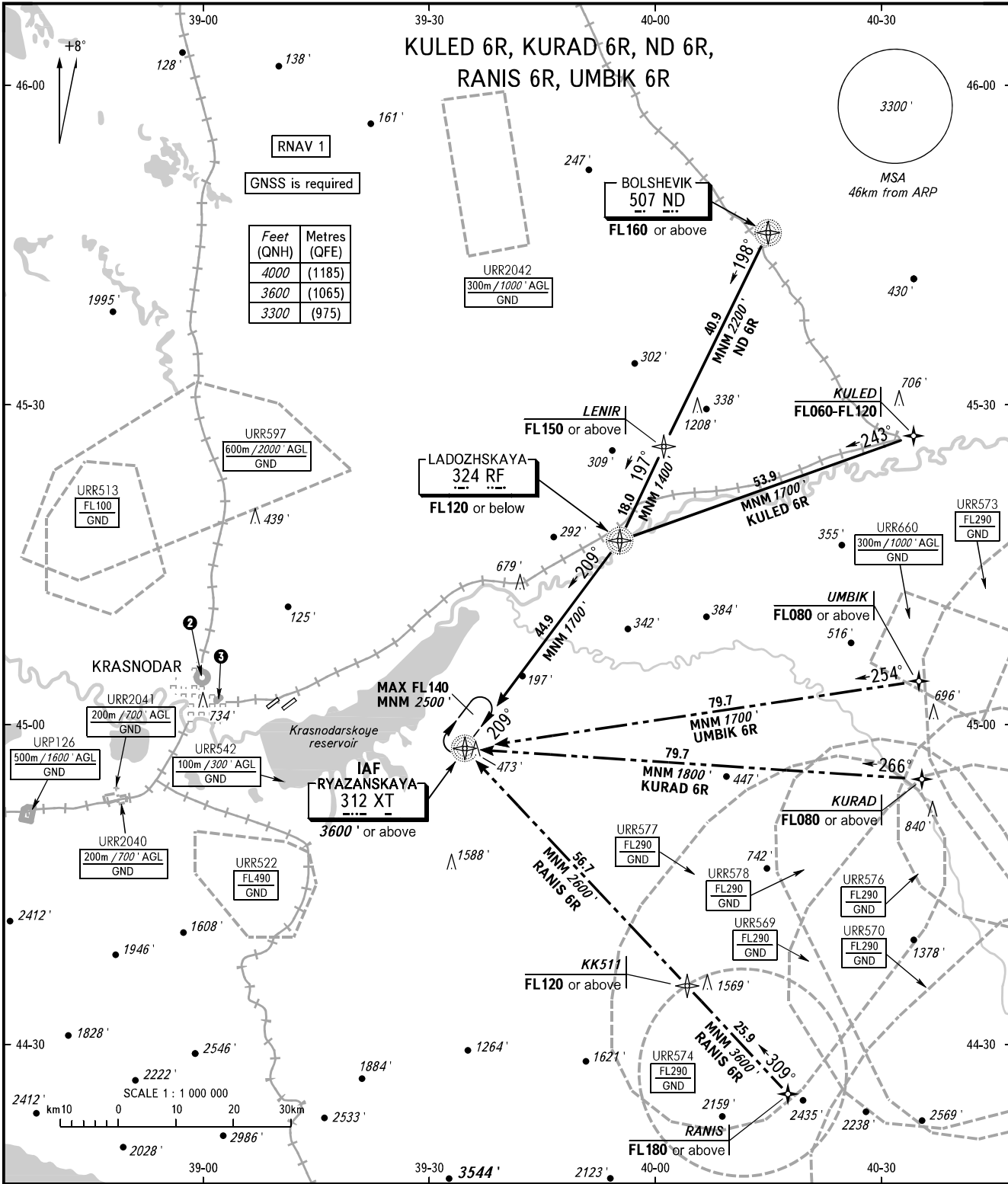


STANDARD ARRIVAL CHART
INSTRUMENT (STAR) - ICAO

KRASNODAR, RUSSIA
PASHKOVSKIY
RWY 05R

TRANSITION
LEVEL: **1**



Feet (QNH)	Metres (QFE)
4000	(1185)
3600	(1065)
3300	(975)

APPROACH Sector WEST **127.700**
Sector EAST **129.600**
TOWER **118.200**
RADAR **121.300**

2 URP128
500m / 1600' AGL
GND

3 URP132
500m / 1600' AGL
GND

1 TRANSITION LEVEL:
- FL060 when QNH is 977 hPa (733mm mercury column) or above;
- FL070 when QNH is 941 hPa (706mm mercury column) or above,
but less than 977 hPa (733mm mercury column).
NOTE:
1. When URR577, URR578, URR576, URR573, URR569 are active,
STAR KURAD 6R is not AVBL.
2. When URR574, URR577, URR569 are active, STAR RANIS 6R
is not AVBL.
3. When URR578, URR573, URR576 are active, STAR UMBIK 6R
is not AVBL.

BEARINGS AND TRACKS ARE MAGNETIC
ALTITUDES AND ELEVATIONS IN FEET
DISTANCES IN KILOMETRES

Alt set: -QNH(QFE on req);
-hPa(mm on req).

CHANGE: New chart