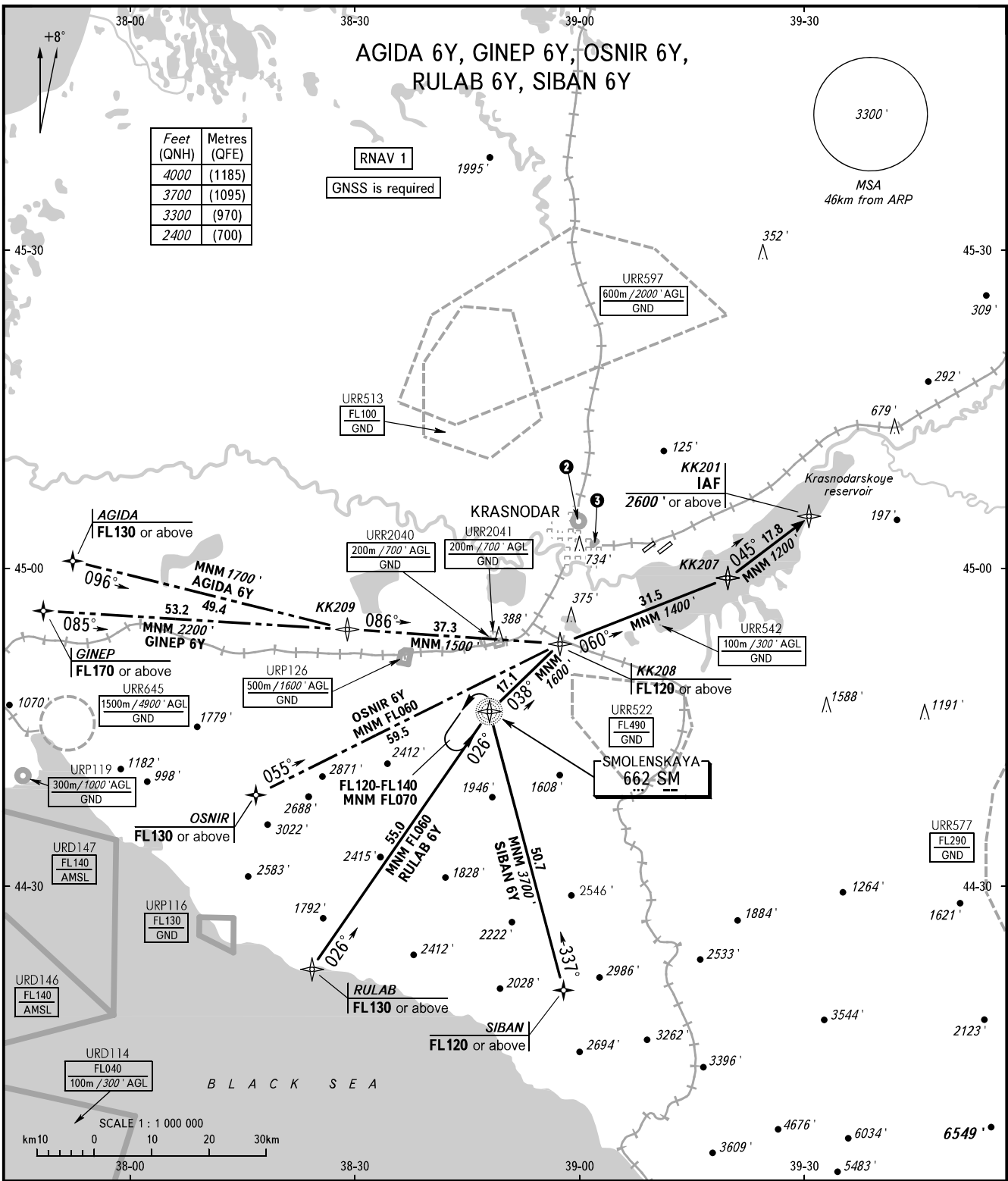


STANDARD ARRIVAL CHART
INSTRUMENT (STAR) - ICAO

KRASNODAR, RUSSIA
PASHKOVSKIY
RWY 23L

TRANSITION
LEVEL: **1**



Feet (QNH)	Metres (QFE)
4000	(1185)
3700	(1095)
3300	(970)
2400	(700)

RNAV 1
GNSS is required

3300'
MSA
46km from ARP

APPROACH Sector WEST **127.700**
Sector EAST **129.600**
RADAR **121.300**
TOWER **118.200**

2 URP128
500m / 1600' AGL
GND

3 URP132
500m / 1600' AGL
GND

1 TRANSITION LEVEL:
- FL060 when QNH is 977 hPa (733mm mercury column) or above;
- FL070 when QNH is 941 hPa (706mm mercury column) or above,
but less than 977 hPa (733mm mercury column).

NOTE
ATC using facilities for surveillance of ACFT to avoid restricted area URR522 is required for holding over NDB SM.

BEARINGS AND TRACKS ARE MAGNETIC
ALTITUDES AND ELEVATIONS IN **FEET**
DISTANCES IN KILOMETRES

Alt set: -QNH(QFE on req);
-hPa(mm on req).