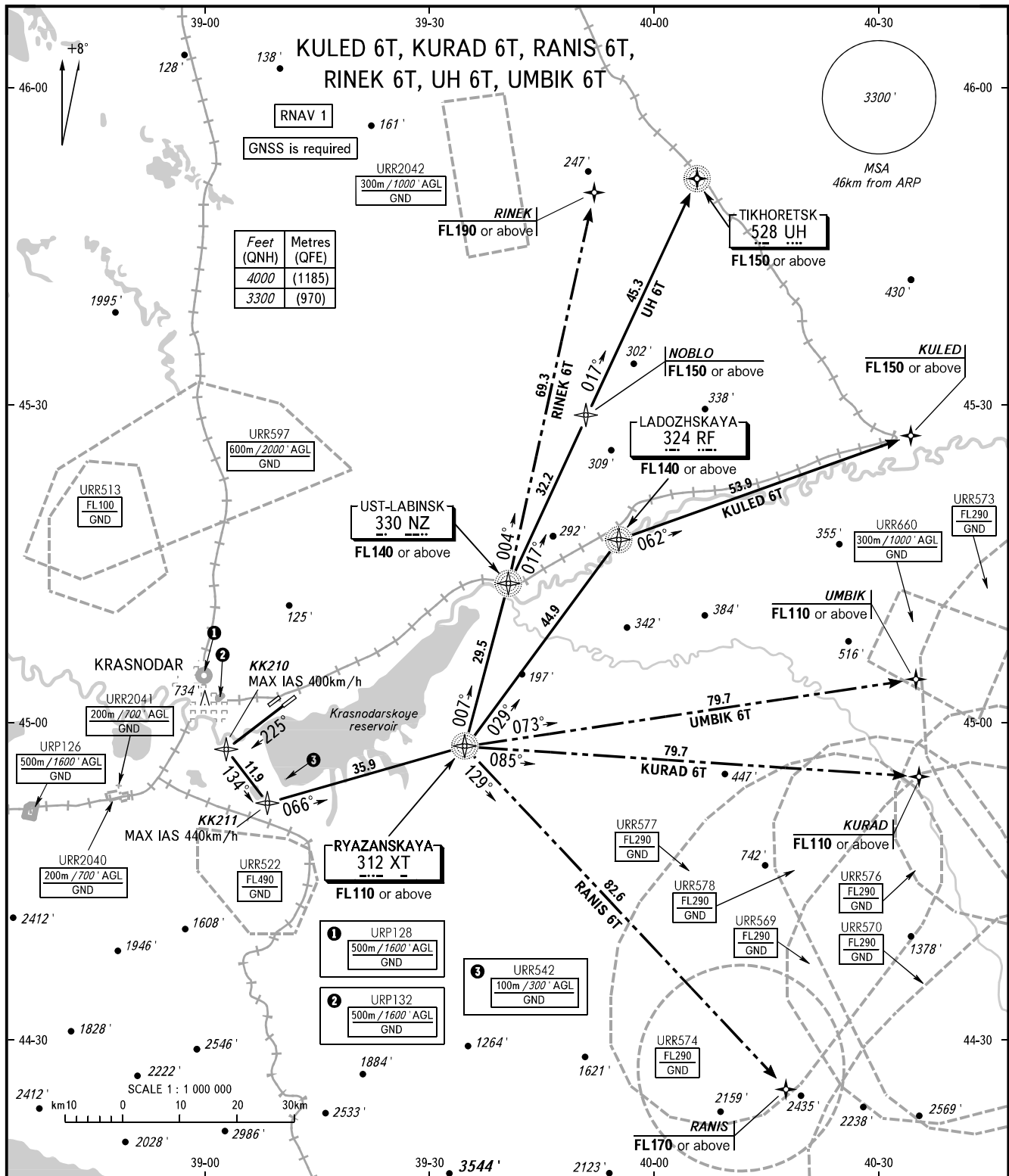


STANDARD DEPARTURE CHART
INSTRUMENT (SID) - ICAO

TRANSITION
ALTITUDE: 4000'

KRASNODAR, RUSSIA
PASHKOVSKIY
RWY 23L



TOWER 118.200
RADAR 121.300
APPROACH Sector WEST 127.700
Sector EAST 129.600

WARNING
The minimum climb gradient (required due to the airspace structure only) is 5.8% up to FL110 for all SID.

- NOTE:**
- When URR574, URR577 are active, SID RANIS 6T is not AVBL.
 - When URR577, URR578, URR569, URR576 are active, SID KURAD 6T is not AVBL.
 - When URR578 is active, SID UMBIK 6T is not AVBL.

BEARINGS AND TRACKS ARE MAGNETIC
ALTITUDES AND ELEVATIONS IN FEET
DISTANCES IN KILOMETRES

Alt set: -QNH(QFE on req);
-hPa(mm on req).