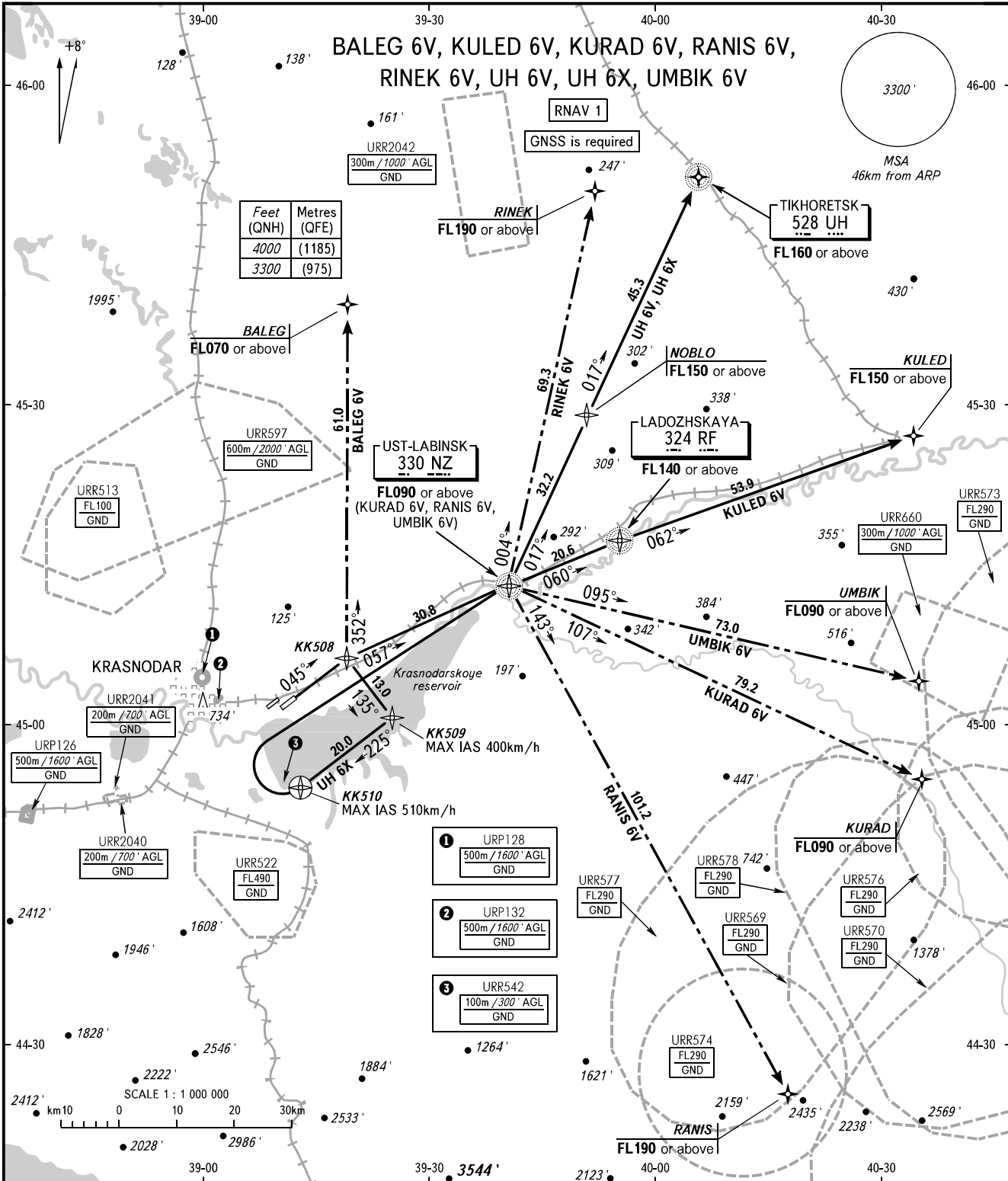


STANDARD DEPARTURE CHART  
INSTRUMENT (SID) - ICAO

TRANSITION  
ALTITUDE: 4000'

KRASNODAR, RUSSIA  
PASHKOVSKIY  
RWY 05R



Feet (QNH)	Metres (QFE)
4000	(1185)
3300	(975)

- 1 URP128  
500m/1600' AGL  
GND
- 2 URP132  
500m/1600' AGL  
GND
- 3 URR542  
100m/300' AGL  
GND

TOWER 118.200  
RADAR 121.300  
APPROACH Sector WEST 127.700  
Sector EAST 129.600

**WARNING**  
The minimum climb gradients (required due to the airspace structure only) are as follows:  
- 5.2% up to FL190 for SID RINEK 6V;  
- 6.2% up to FL150 for SID UH 6V;  
- 6.5% up to FL090, then 4.8% up to FL190 for SID RANIS 6V;  
- 6.5% up to FL090 for SID KURAD 6V, UMBIK 6V;  
- 6.8% up to FL140 for SID KULED 6V.

**NOTE:**  
1. When URR574, URR577, URR569 are active, SID RANIS 6V is not AVBL.  
2. When URR577, URR578, URR569, URR576, URR573 are active, SID KURAD 6V is not AVBL.  
3. When URR573 is active, SID UMBIK 6V is not AVBL.

BEARINGS AND TRACKS ARE MAGNETIC  
ALTITUDES AND ELEVATIONS IN FEET  
DISTANCES IN KILOMETRES

Alt set: -QNH(QFE on req);  
-hPa(mm on req).

CHANGE: New chart