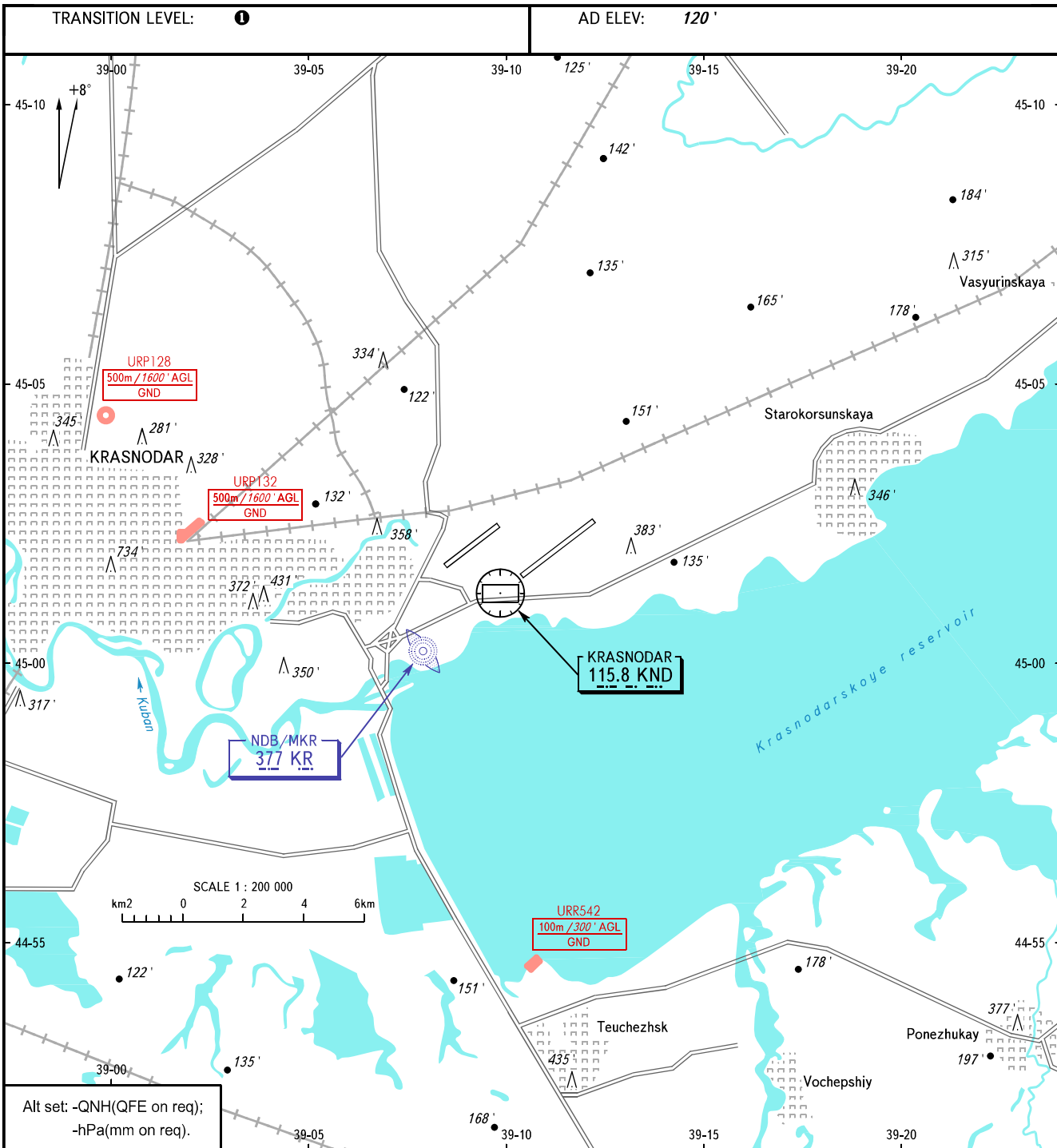


VISUAL
APPROACH
CHART - ICAO

TOWER	118.200
RADAR	121.300

KRASNODAR, RUSSIA
PASHKOVSKIY
RWY 05R/23L



- 1** TRANSITION LEVEL:
- FL060 when QNH is 977 hPa (733mm mercury column) or above;
 - FL070 when QNH is 941 hPa (706mm mercury column) or above, but less than 977 hPa (733mm mercury column).

CHANGE: New chart