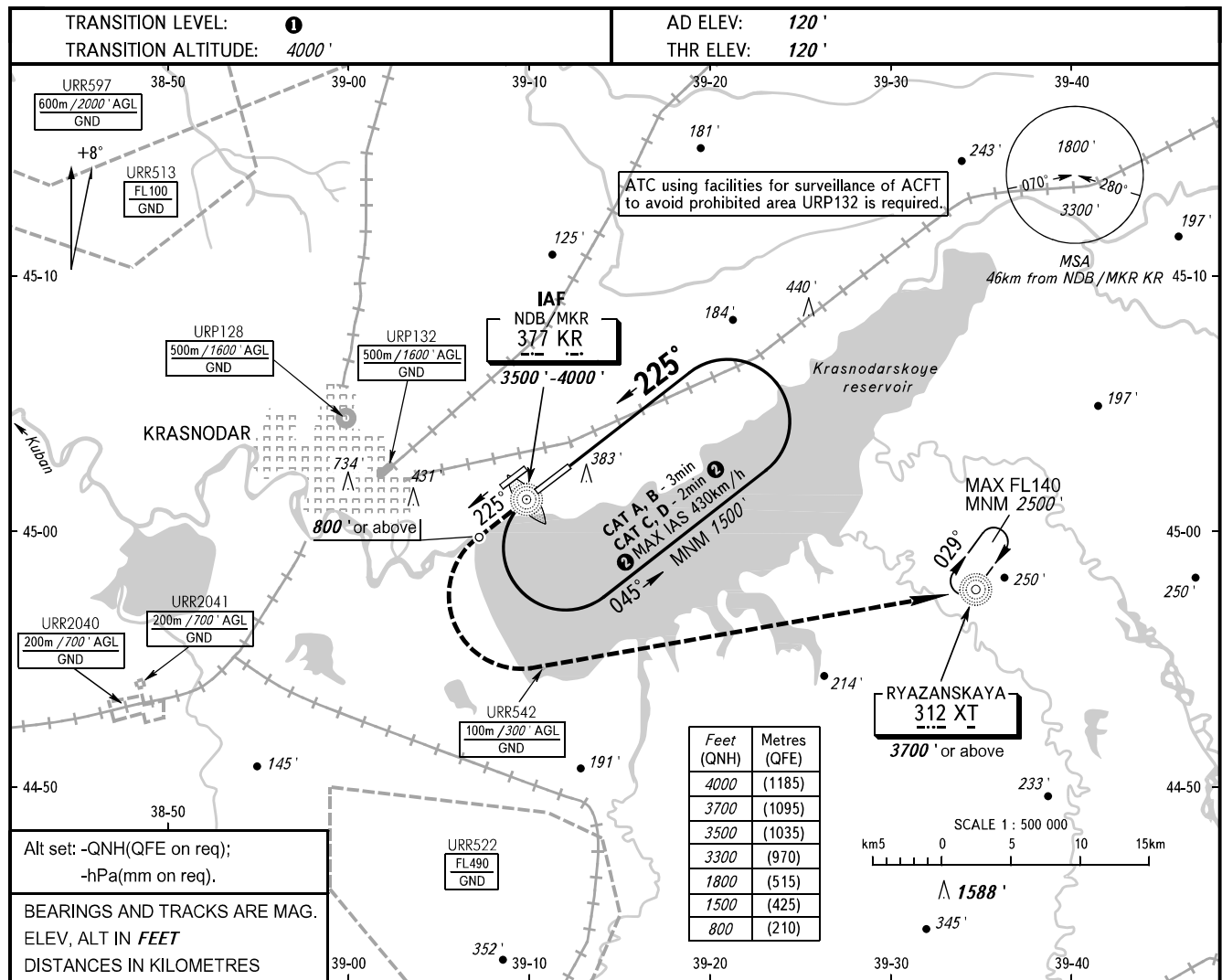


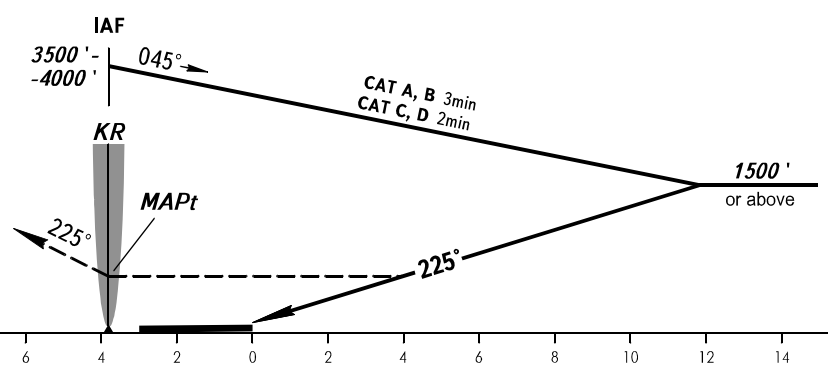
**INSTRUMENT
APPROACH
CHART - ICAO**

RADAR	121.300
TOWER	118.200

KRASNODAR, RUSSIA
PASHKOVSKIY
NDB Y RWY 23L



MISSED APPROACH
Climb on track 225° to 800' or above, turn LEFT to NDB XT climbing to 3700' or above.



OCA(H)		A	B	C	D
Straight-in	Approach	740' (620')	740' (620')	740' (620')	740' (620')
Circling		740' (620')	740' (620')	780' (660')	830' (710')

① **TRANSITION LEVEL:**
- FL060 when QNH is 977 hPa (733 mm mercury column) or above;
- FL070 when QNH is 941 hPa (706 mm mercury column) or above, but less than 977 hPa (733 mm mercury column).

NOTE:
1. MAPt at NDB/MKR KR. Timing not authorized for defining MAPt.
2. Turn before passing MAPt is PROHIBITED.
3. Wind shear is expected.