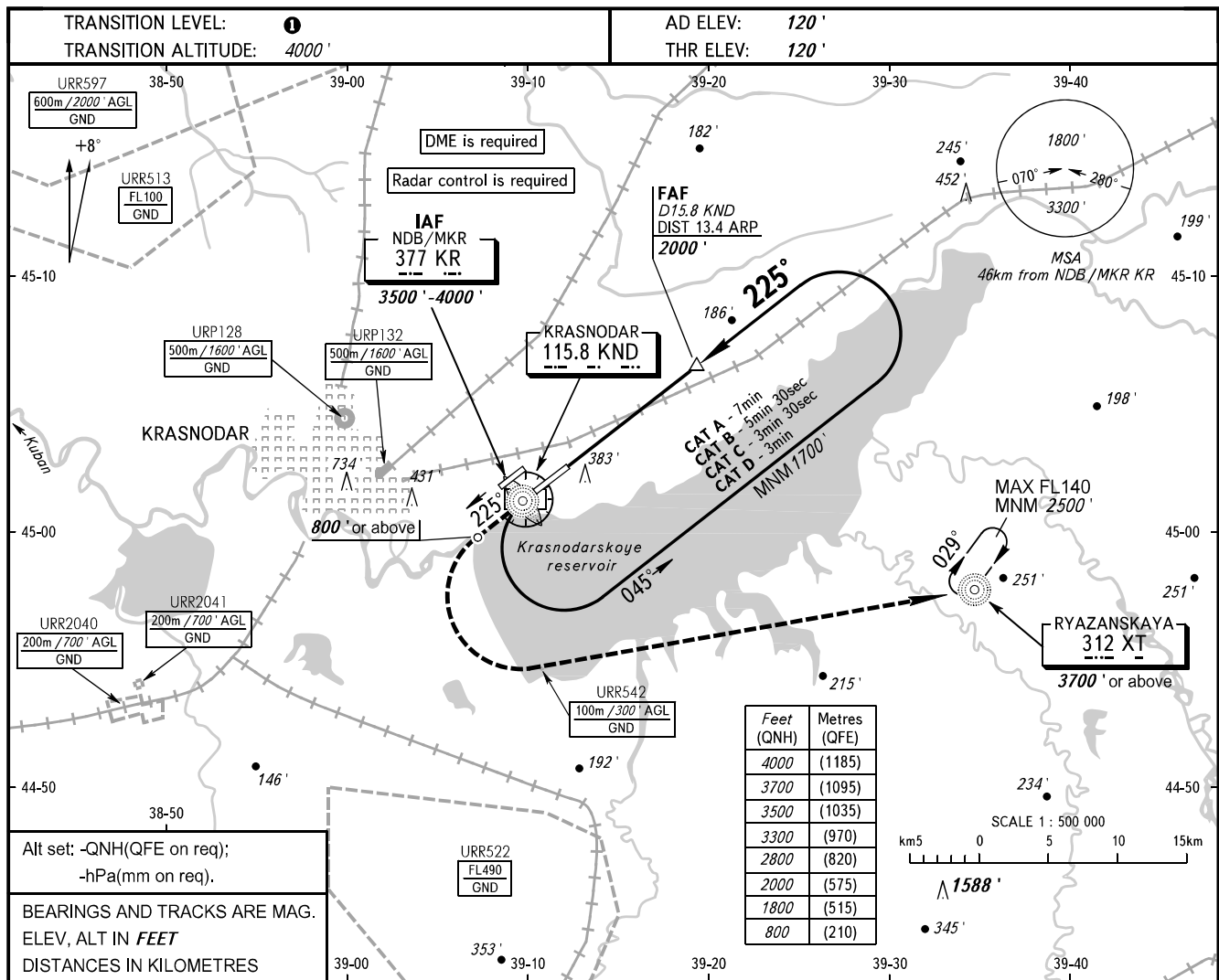


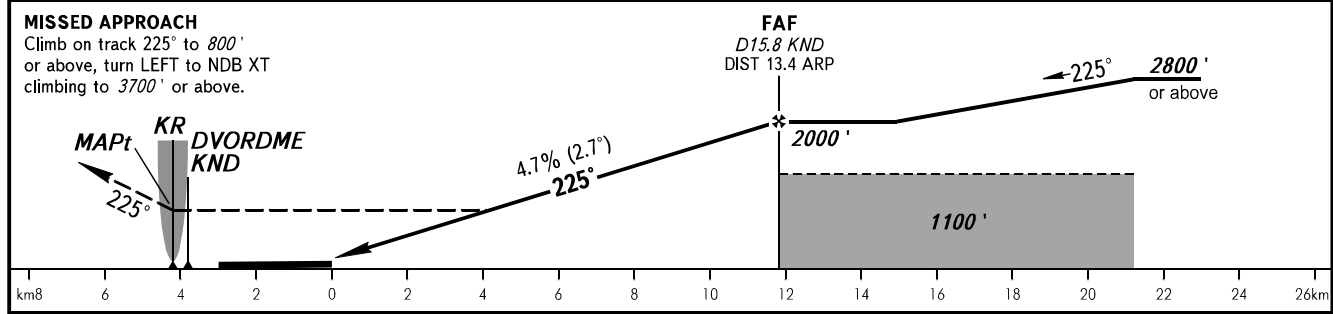
**INSTRUMENT
APPROACH
CHART - ICAO**

RADAR	121.300
TOWER	118.200

**KRASNODAR, RUSSIA
PASHKOVSKIY
NDB Z RWY 23L**



DME KND	8.0	10.0	12.0	14.0	15.8
ALTITUDE	800'	1110'	1420'	1720'	2000'



OCA(H)	A	B	C	D						
Straight-in	620' (500')	620' (500')	620' (500')	620' (500')						
Approach										
Circling	680' (560')	680' (560')	780' (660')	830' (710')						
GROUND SPEED	km/h	150	180	210	240	270	300	330	360	390
RATE OF DESCENT	m/s	2.0	2.4	2.7	3.1	3.5	3.9	4.3	4.7	5.1
	ft/min	385	463	540	617	694	771	848	925	1002

1 TRANSITION LEVEL:
- FL060 when QNH is 977 hPa (733 mm mercury column) or above;
- FL070 when QNH is 941 hPa (706 mm mercury column) or above,
but less than 977 hPa (733 mm mercury column).

NOTE:
1. MAPt at NDB/MKR KR. Timing not authorized for defining MAPt.
2. Turn before passing MAPt is PROHIBITED.
3. Wind shear is expected.