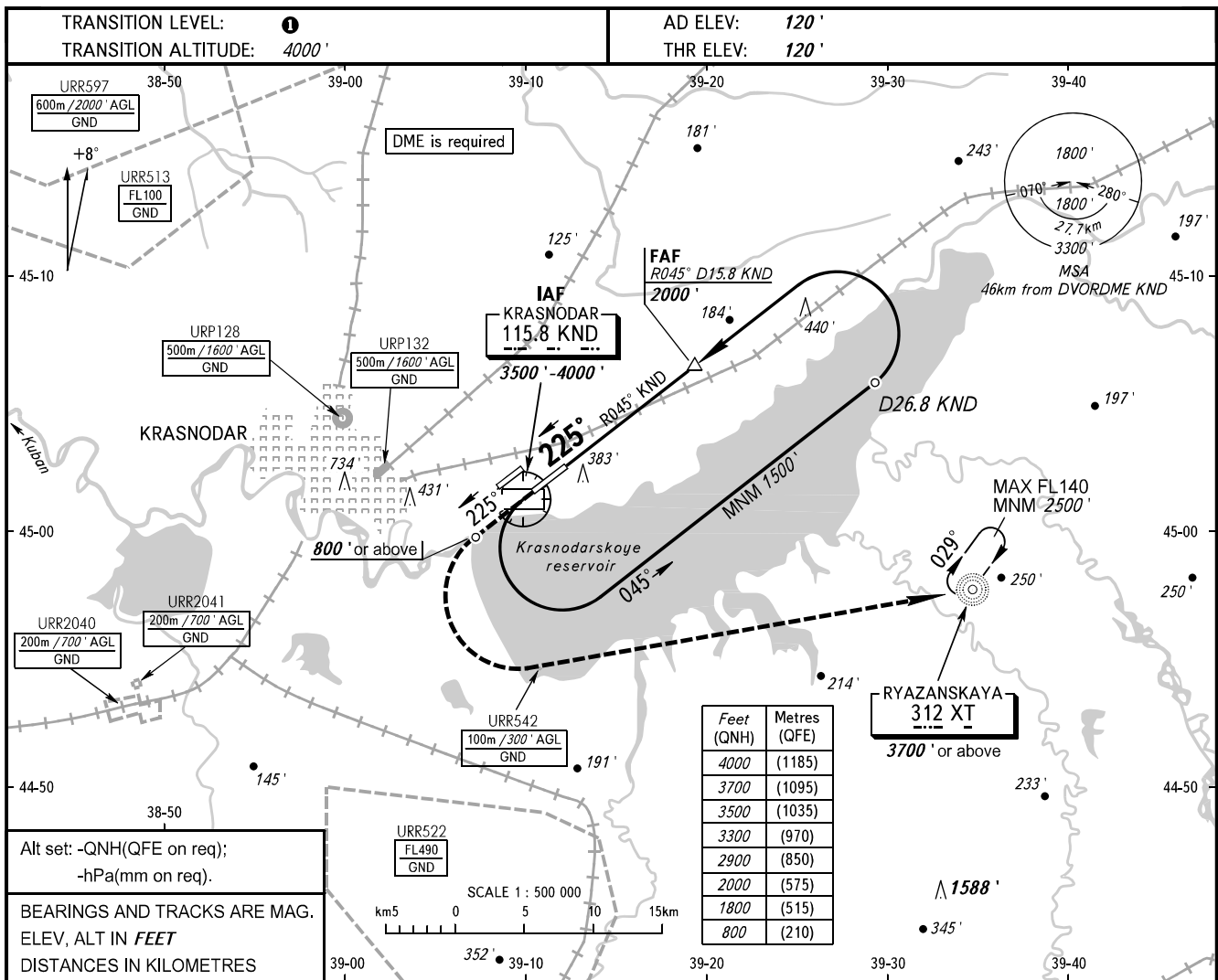


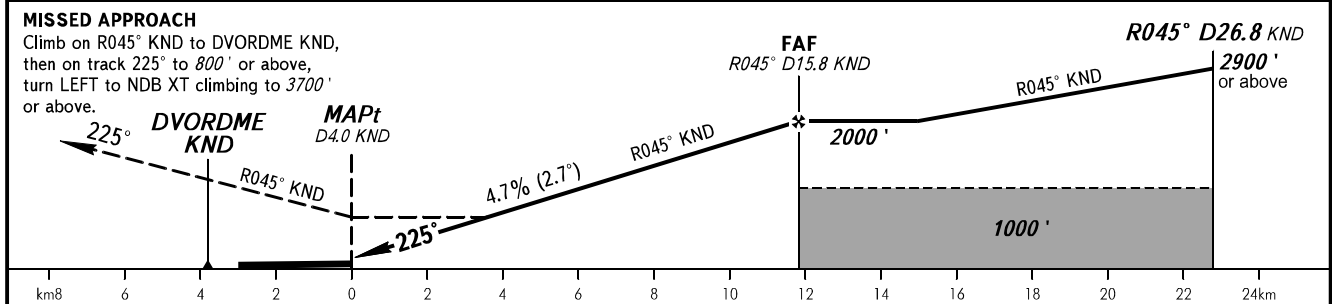
**INSTRUMENT  
APPROACH  
CHART - ICAO**

RADAR	121.300
TOWER	118.200

**KRASNODAR, RUSSIA**  
PASHKOVSKIY  
DVOR X RWY 23L



DME KND	8.0	10.0	12.0	14.0	15.8
ALTITUDE	800'	1110'	1420'	1720'	2000'



OCA(H)		A	B	C	D	<b>① TRANSITION LEVEL:</b> - FL060 when QNH is 977 hPa (733mm mercury column) or above; - FL070 when QNH is 941 hPa (706mm mercury column) or above, but less than 977 hPa (733mm mercury column). <b>NOTE:</b> 1. Timing not authorized for defining MAPt. 2. Turn before passing MAPt is PROHIBITED. 3. Wind shear is expected.					
Straight-in		550' (430')	550' (430')	550' (430')	550' (430')						
	Approach										
Circling		680' (560')	680' (560')	780' (660')	830' (710')						
GROUND SPEED		km/h	150	180	210	240	270	300	330	360	390
RATE OF DESCENT		m/s	2.0	2.4	2.7	3.1	3.5	3.9	4.3	4.7	5.1
		ft/min	385	463	540	617	694	771	848	925	1002